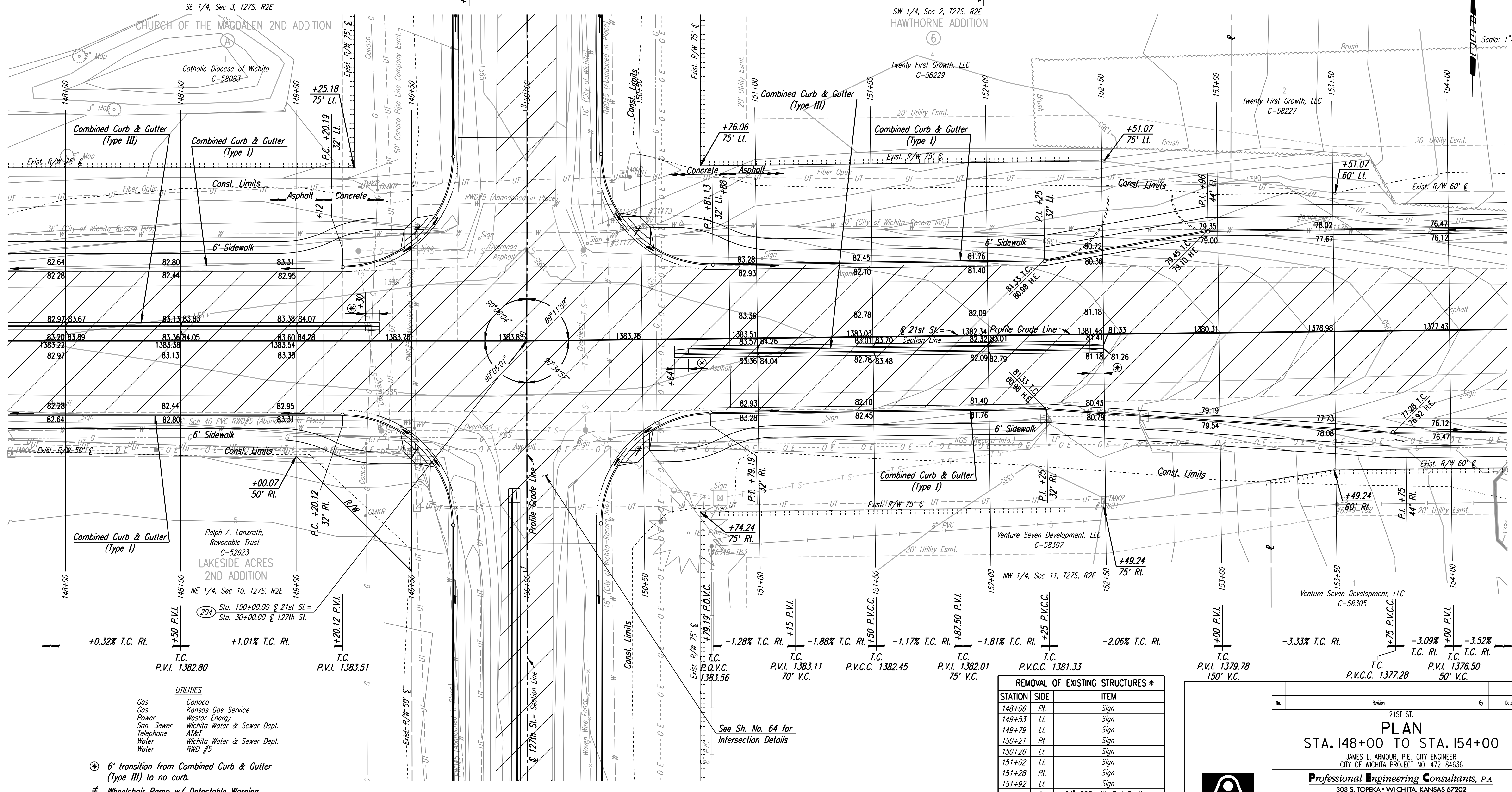
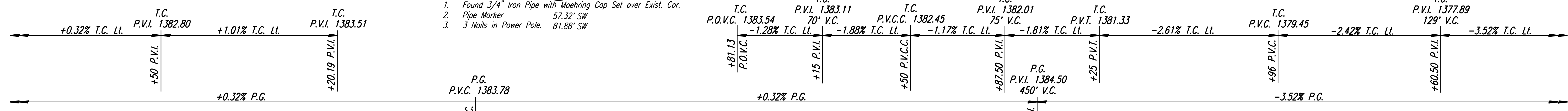


SW Cor., Sec. 2, T27S, R2E (204)  
 1. Found 3/4" Iron Pipe with Moehring Cap Set over Exist. Cor.  
 2. Pipe Marker 57.32' SW  
 3. 3 Nails in Power Pole. 81.88' SW



- UTILITIES**
- Gas Conoco
  - Gas Kansas Gas Service
  - Power Westar Energy
  - San. Sewer Wichita Water & Sewer Dept.
  - Telephone AT&T
  - Water Wichita Water & Sewer Dept.
  - Water RWD #5

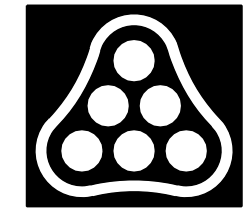
- ⊛ 6' transition from Combined Curb & Gutter (Type III) to no curb.
- ≠ Wheelchair Ramp w/ Detectable Warning.

See Sh. No. 64 for Intersection Details

**REMOVAL OF EXISTING STRUCTURES \***

STATION	SIDE	ITEM
148+06	Rt.	Sign
149+53	Lt.	Sign
149+79	Lt.	Sign
150+21	Rt.	Sign
150+26	Lt.	Sign
151+02	Lt.	Sign
151+28	Rt.	Sign
151+92	Lt.	Sign
152+46	Rt.	24" RCP with End Sections

\* For Information Only



21ST ST.  
**PLAN**  
 STA. 148+00 TO STA. 154+00  
 JAMES L. ARMOUR, P.E. - CITY ENGINEER  
 CITY OF WICHITA PROJECT NO. 472-84636  
**Professional Engineering Consultants, P.A.**  
 303 S. TOPEKA • WICHITA, KANSAS 67202  
 316-262-2691 • FAX 316-262-3003

Designed by	JPS	Job No.	01616
Drawn by	SVB	Date	August, 2008

Sht. 12 of 282

DSNR: JPS OPER: DRP SCALE: 1"=20'  
 I:\2001\01616\PLAN\BDR148.DGN 5-12-2004 14:36:46 LAST REV: 5-19-2008 BY: svb