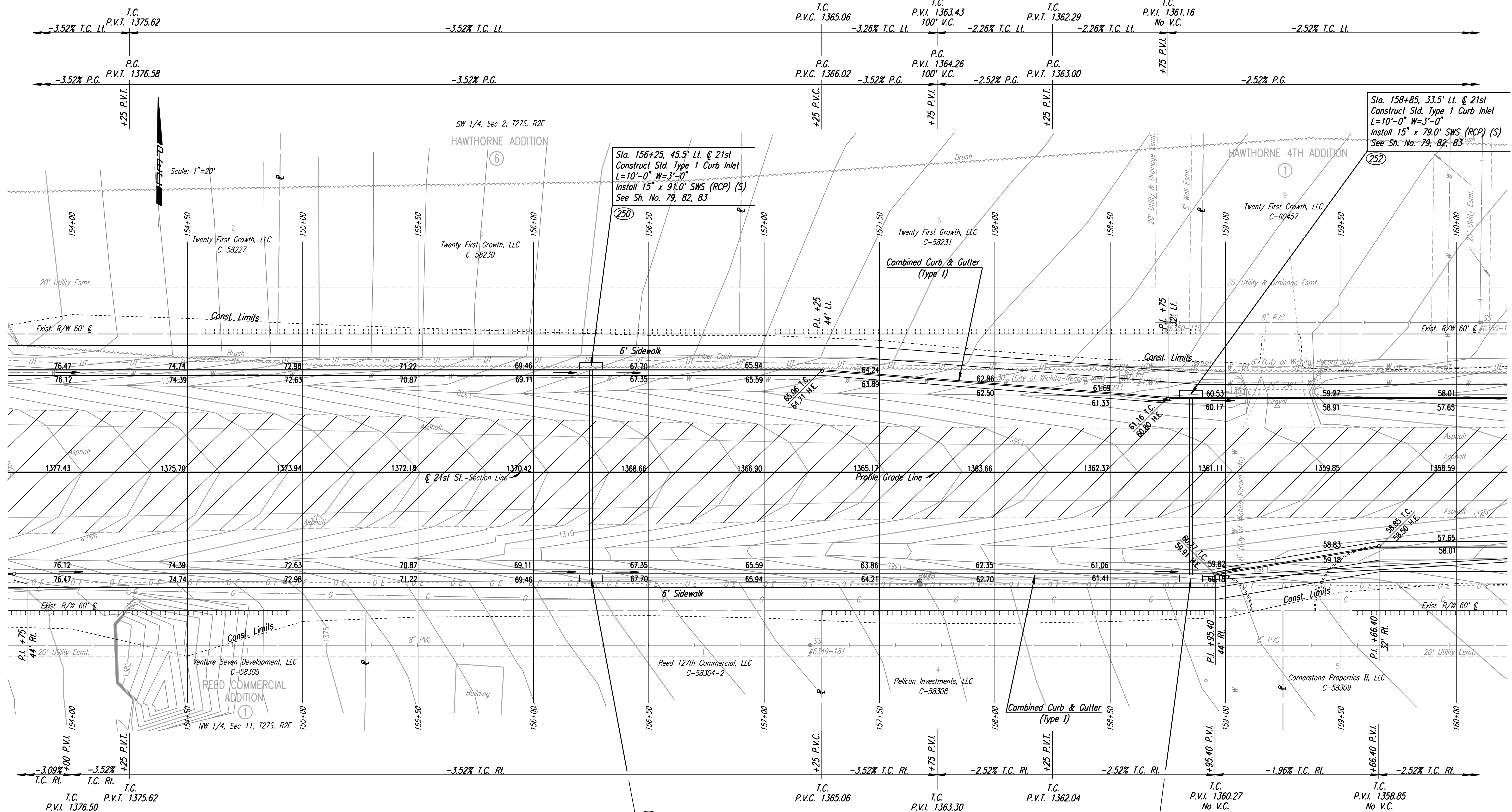


DSNR: JPS OPER: DRP SCALE: 1"=20'  
 I:\2001\01616\PLAN\BDR154.DGN 5-19-2004 14:36:46 LAST REV: 5-19-2008 BY: svb



Sta. 156+25, 45.5' Lt. @ 21st  
 Construct Std. Type 1 Curb Inlet  
 L=10'-0" W=3'-0"  
 Install 15" x 91.0' SWS (RCP) (S)  
 See Sh. No. 79, 82, 83

Sta. 158+85, 33.5' Lt. @ 21st  
 Construct Std. Type 1 Curb Inlet  
 L=10'-0" W=3'-0"  
 Install 15" x 79.0' SWS (RCP) (S)  
 See Sh. No. 79, 82, 83

(251)  
 Sta. 156+25, 45.5' Rt. @ 21st  
 Construct Std. Type 1 Curb Inlet  
 L=10'-0" W=3'-0"  
 Install 15" x 260.0' SWS (RCP) (E)  
 See Sh. No. 79, 82, 83

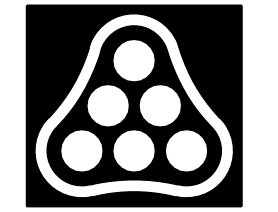
(253)  
 Sta. 158+85, 45.5' Rt. @ 21st  
 Construct Std. Type 1 Curb Inlet  
 L=10'-0" W=3'-0"  
 Install 18" x 210.3' SWS (RCP) (E)  
 See Sh. No. 79, 82, 83

REMOVAL OF EXISTING STRUCTURES *		
STATION	SIDE	ITEM
154+05	Rt.	Sign
159+23	Lt.	24" CMP with End Sections

\* For Information Only

BM #8 RR spike in N. face Power Pole, 4th Pole E of  
 127th E on S Side 21st St. N.  
 47.21' Rt. Sta. 157+67.47 Elev. 1367.22

- UTILITIES**
- Gas Kansas Gas Service
  - Power Westar Energy
  - San. Sewer Wichita Water & Sewer Dept.
  - Telephone AT&T
  - Water Wichita Water & Sewer Dept.



No.	Revision	By	Date
<b>21ST ST.</b> <b>PLAN</b> <b>STA. 154+00 TO STA. 160+00</b> JAMES L. ARMOUR, P.E. - CITY ENGINEER CITY OF WICHITA PROJECT NO. 472-84636 <b>Professional Engineering Consultants, P.A.</b> 303 S. TOPEKA • WICHITA, KANSAS 67202 316-262-2691 • FAX 316-262-3003			
Designed by	JPS	Job No.	01616
Drawn by	SVB	Date	August, 2008
			Sht. 13 of 282