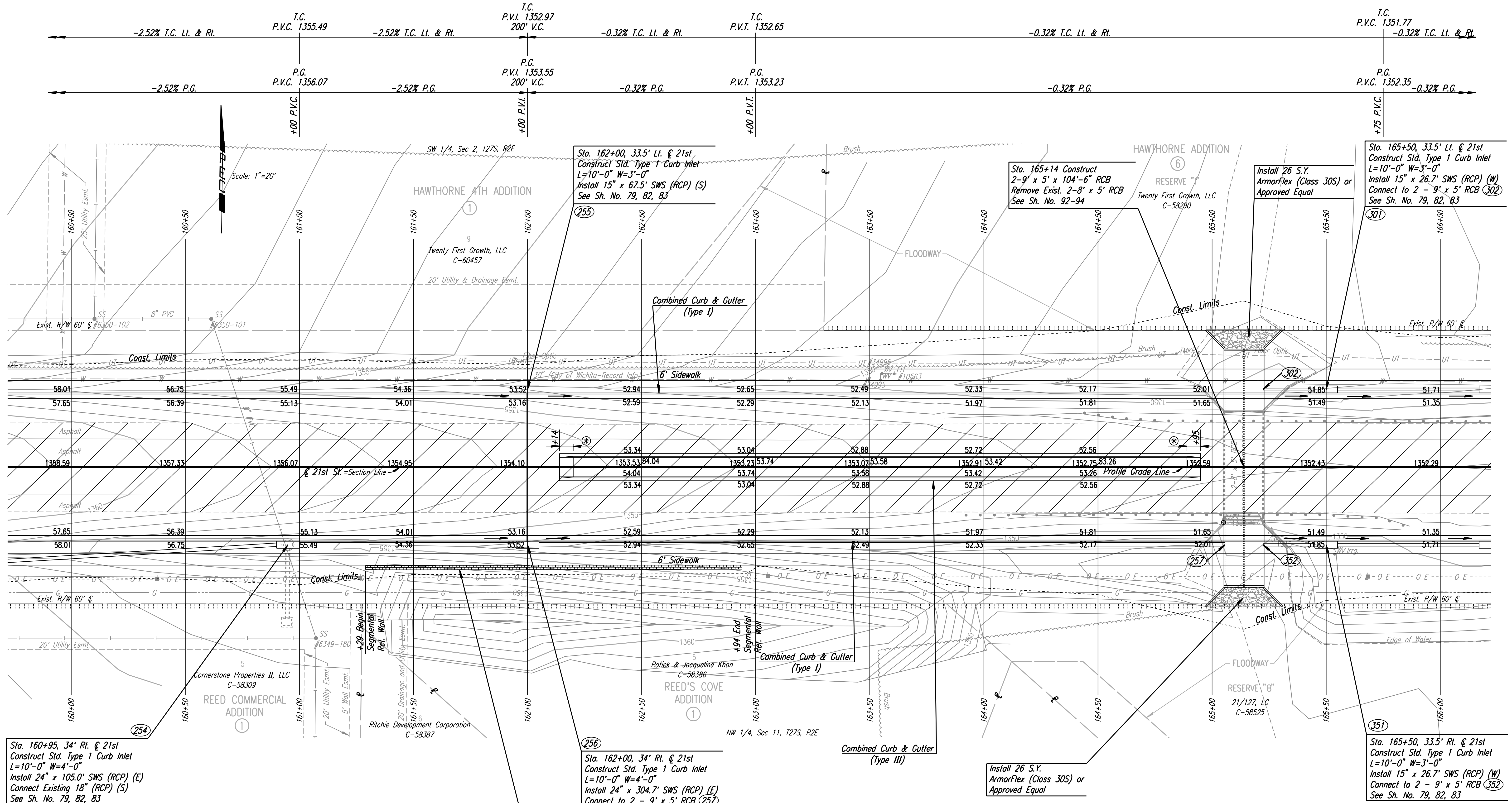


DSNR: JPS OPER: DRP SCALE: 1"=20'
 I:\2001\01616\PLAN\BDR160.DGN 5-12-2004 14:36:46 LAST REV: 5-19-2008 BY: svb



Sta. 160+95, 34' Rt. @ 21st
 Construct Std. Type 1 Curb Inlet
 L=10'-0" W=4'-0"
 Install 24" x 105.0" SWS (RCP) (E)
 Connect Existing 18" (RCP) (S)
 See Sh. No. 79, 82, 83

REMOVAL OF EXISTING STRUCTURES *		
STATION	SIDE	ITEM
160+95	Rt.	R.C. Manhole
163+91	Rt.	196 L.F. Guard Rail
164+41	Lt.	159 L.F. Guard Rail
165+14	Cin.	2-8'x5' RCB

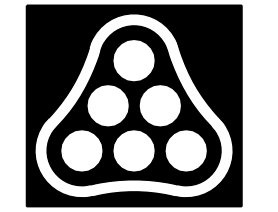
* For Information Only

Sta. 161+29 to 162+94
 Construct 490 Sq. Ft.
 Segmental Retaining Wall
 See Sh. No. 76

Sta. 162+00, 34' Rt. @ 21st
 Construct Std. Type 1 Curb Inlet
 L=10'-0" W=4'-0"
 Install 24" x 304.7" SWS (RCP) (E)
 Connect to 2 - 9' x 5' RCB (257)
 See Sh. No. 79, 82, 83

* 6' transition from Combined Curb & Gutter (Type III) to no curb.

BM #9 Chis. "a" W end S Headwall RCB under 21st N
 0.4 Mile E ± of 127th St. E.
 24.18' Rt. Sta. 165+05.03 Elev. 1351.89



No.	Revision	By	Date
21ST ST. PLAN STA. 160+00 TO STA. 166+00 JAMES L. ARMOUR, P.E. - CITY ENGINEER CITY OF WICHITA PROJECT NO. 472-84636 Professional Engineering Consultants, P.A. 303 S. TOPEKA • WICHITA, KANSAS 67202 316-262-2691 • FAX 316-262-3003			
Designed by	JPS	Job No.	01616
Drawn by	SVB	Date	August, 2008
			SH. 15 of 282