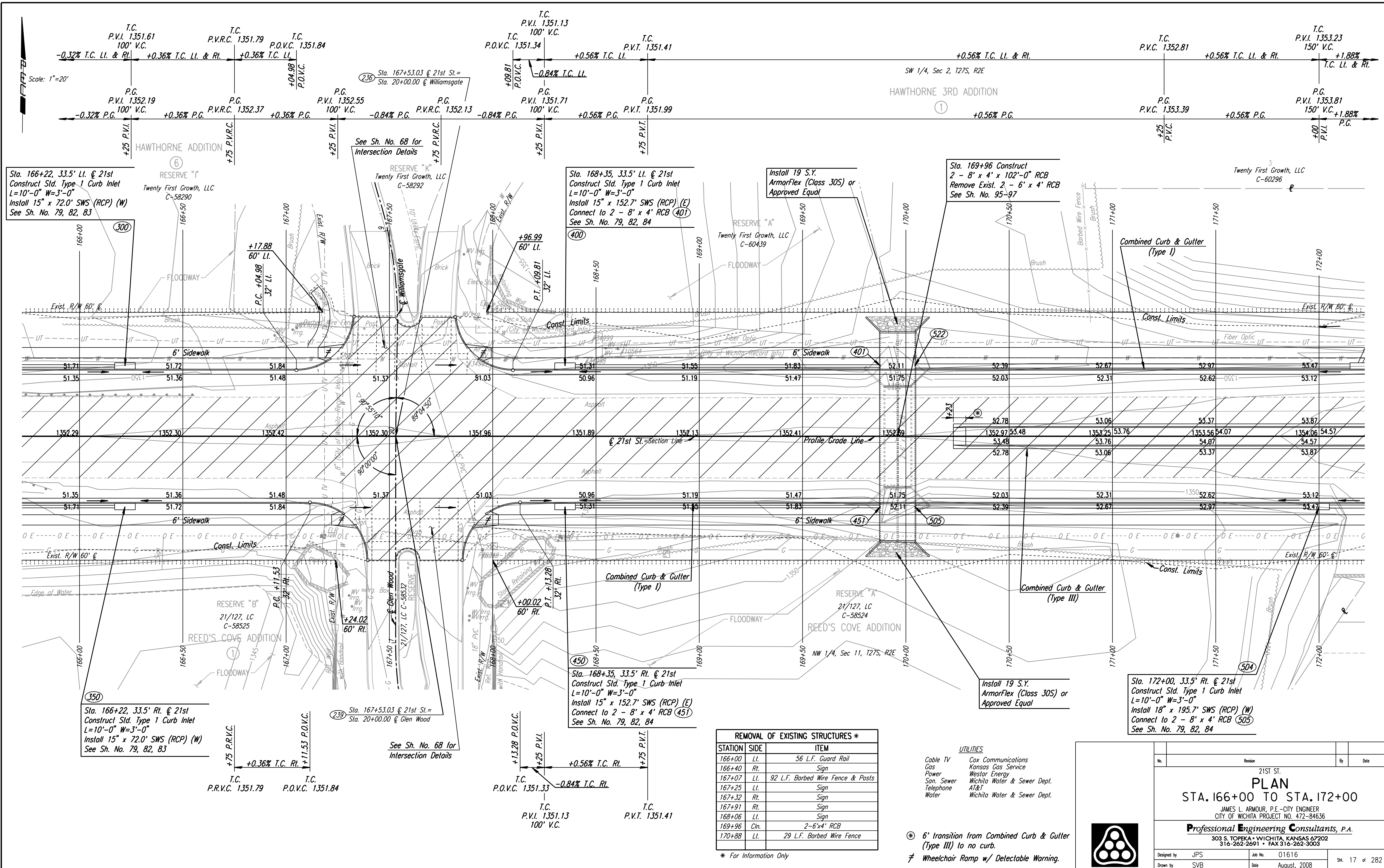


DSNR: JPS OPER: DRP SCALE: 1"=20'
 I:\2001\01616\PLAN\BDR166.DGN 5-12-2004 14:36:46 LAST REV: 5-19-2008 BY: svb



Sta. 166+22, 33.5' Lt. @ 21st
 Construct Std. Type 1 Curb Inlet
 L=10'-0" W=3'-0"
 Install 15" x 72.0' SWS (RCP) (W)
 See Sh. No. 79, 82, 83

RESERVE "T"
 Twenty First Growth, LLC
 C-58290

Sta. 167+53.03 @ 21st St.=
 Sta. 20+00.00 @ Williamsgate

See Sh. No. 68 for
 Intersection Details

RESERVE "K"
 Twenty First Growth, LLC
 C-58292

Sta. 168+35, 33.5' Lt. @ 21st
 Construct Std. Type 1 Curb Inlet
 L=10'-0" W=3'-0"
 Install 15" x 152.7' SWS (RCP) (E)
 Connect to 2 - 8' x 4' RCB (401)
 See Sh. No. 79, 82, 84

Install 19 S.Y.
 ArmorFlex (Class 30S) or
 Approved Equal

Sta. 169+96 Construct
 2 - 8' x 4' x 102'-0" RCB
 Remove Exist. 2 - 6' x 4' RCB
 See Sh. No. 95-97

RESERVE "A"
 Twenty First Growth, LLC
 C-60439

Combined Curb & Gutter
 (Type I)

Sta. 166+22, 33.5' Rt. @ 21st
 Construct Std. Type 1 Curb Inlet
 L=10'-0" W=3'-0"
 Install 15" x 72.0' SWS (RCP) (W)
 See Sh. No. 79, 82, 83

RESERVE "B"
 21/127, LC
 C-58525

Sta. 167+53.03 @ 21st St.=
 Sta. 20+00.00 @ Glen Wood

See Sh. No. 68 for
 Intersection Details

Sta. 168+35, 33.5' Rt. @ 21st
 Construct Std. Type 1 Curb Inlet
 L=10'-0" W=3'-0"
 Install 15" x 152.7' SWS (RCP) (E)
 Connect to 2 - 8' x 4' RCB (451)
 See Sh. No. 79, 82, 84

Install 19 S.Y.
 ArmorFlex (Class 30S) or
 Approved Equal

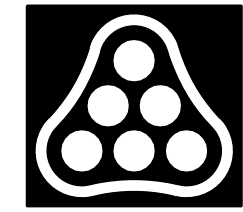
Sta. 172+00, 33.5' Rt. @ 21st
 Construct Std. Type 1 Curb Inlet
 L=10'-0" W=3'-0"
 Install 18" x 195.7' SWS (RCP) (W)
 Connect to 2 - 8' x 4' RCB (505)
 See Sh. No. 79, 82, 84

REMOVAL OF EXISTING STRUCTURES *		
STATION	SIDE	ITEM
166+00	Lt.	56 L.F. Guard Rail
166+40	Rt.	Sign
167+07	Lt.	92 L.F. Barbed Wire Fence & Posts
167+25	Lt.	Sign
167+32	Rt.	Sign
167+91	Rt.	Sign
168+06	Lt.	Sign
169+96	Cln.	2-6'x4' RCB
170+88	Lt.	29 L.F. Barbed Wire Fence

* For Information Only

- UTILITIES
- Cable TV Cox Communications
 - Gas Kansas Gas Service
 - Power Westar Energy
 - San. Sewer Wichita Water & Sewer Dept.
 - Telephone AT&T
 - Water Wichita Water & Sewer Dept.

- ⊗ 6' transition from Combined Curb & Gutter (Type III) to no curb.
- ≠ Wheelchair Ramp w/ Detectable Warning.



No.	Revision	By	Date
21ST ST.			
PLAN			
STA. 166+00 TO STA. 172+00			
JAMES L. ARMOUR, P.E. - CITY ENGINEER CITY OF WICHITA PROJECT NO. 472-84636			
Professional Engineering Consultants, P.A. 303 S. TOPKA • WICHITA, KANSAS 67202 316-262-2691 • FAX 316-262-3003			
Designed by	JPS	Job No.	01616
Drawn by	SVB	Date	August, 2008
			SH. 17 of 282