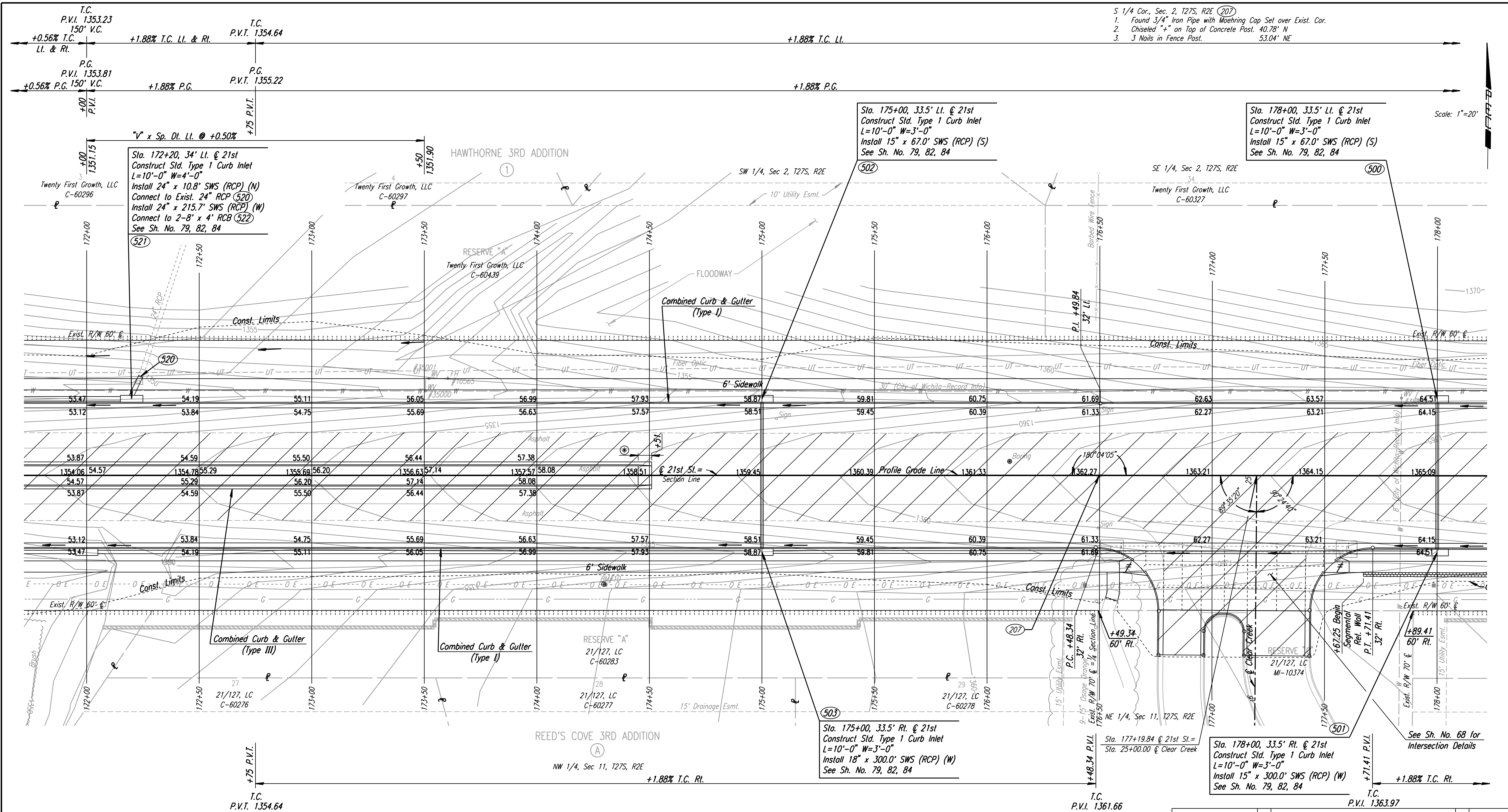


DSNR: JPS OPER: DRP SCALE: 1"=20'
 I:\2001\01616\PLAN\BDR172.DGN 5-12-2004 14:36:46 LAST REV: 5-19-2008 BY: svb



- S 1/4 Cor., Sec. 2, T27S, R2E (207)
1. Found 3/4" Iron Pipe with Moehring Cap Set over Exist. Cor.
 2. Chiseled "+" on Top of Concrete Post. 40.78" N
 3. 3 Nails in Fence Post. 53.04" NE

Scale: 1"=20'

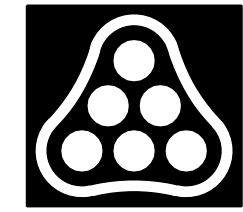
REMOVAL OF EXISTING STRUCTURES *		
STATION	SIDE	ITEM
172+24	Lt.	24" RC End Section
175+06	Lt.	Sign
176+49	Rt.	Sign
176+50	Lt.	Sign

* For Information Only

BM #10 RR spike in N. face Power Pole, S side 21st St. N. 1st Pole W of S 1/4 Cor. Sec. 2-T27S-R2E. 48.33' Rt. Sta. 174+29.72 Elev. 1357.29

- UTILITIES
- Gas: Kansas Gas Service
 - Power: Westar Energy
 - Telephone: AT&T
 - Water: Wichita Water & Sewer Dept.

- ⊗ 6' transition from Combined Curb & Gutter (Type III) to no curb.
- ≠ Wheelchair Ramp w/ Detectable Warning.



No.	Revision	By	Date
21ST ST. PLAN STA. 172+00 TO STA. 178+00 JAMES L. ARMOUR, P.E. - CITY ENGINEER CITY OF WICHITA PROJECT NO. 472-84636 Professional Engineering Consultants, P.A. 303 S. TOPEKA • WICHITA, KANSAS 67202 316-262-2691 • FAX 316-262-3003			
Designed by	JPS	Job No.	01616
Drawn by	SVB	Date	August, 2008
			SH. 19 of 282