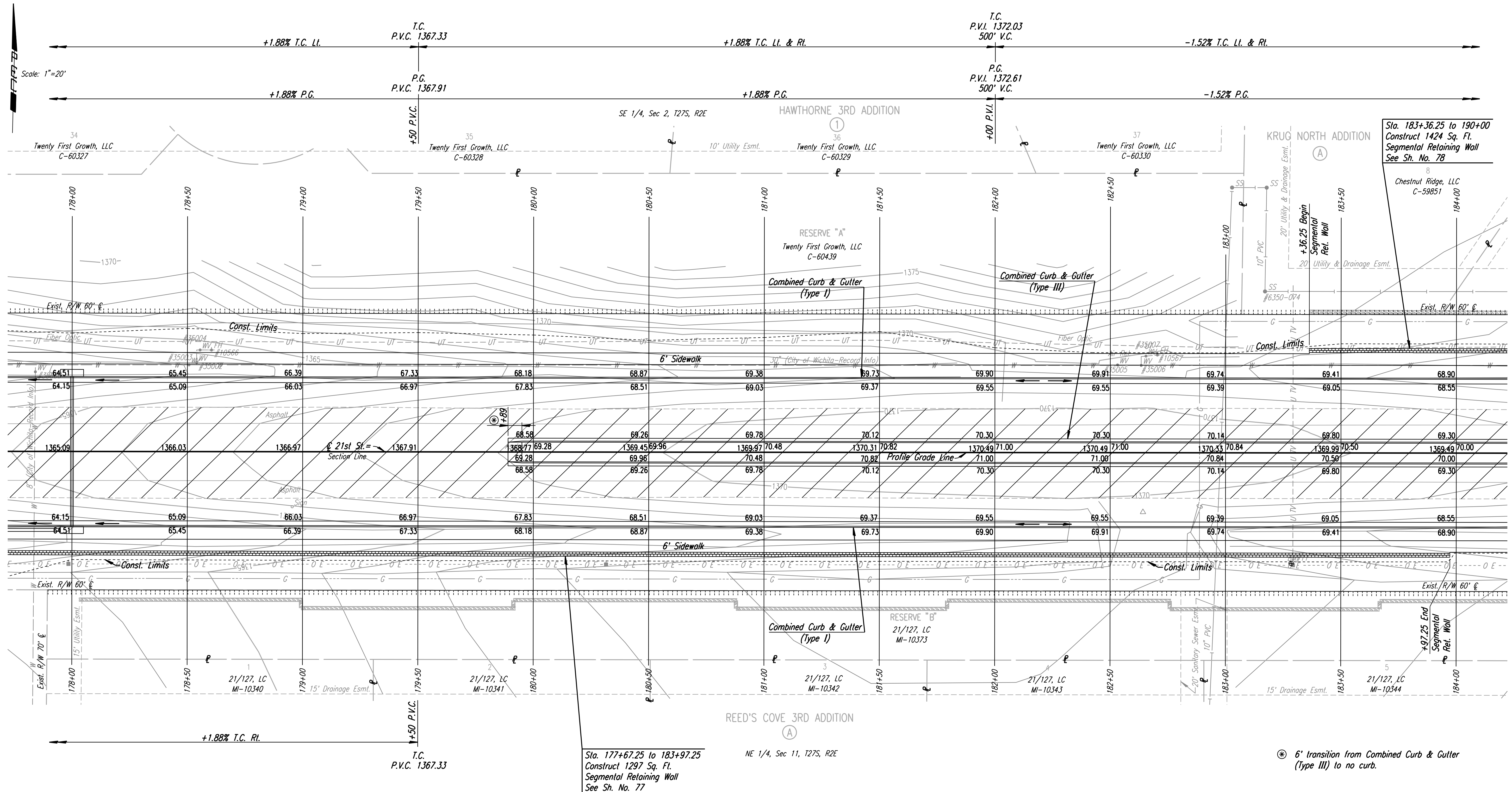


DSNR: JPS OPER: DRP SCALE: 1"=20' I:\2001\01616\PLAN\BDR178.DGN 5-12-2004 14:36:46 LAST REV: 5-19-2008 BY: svb

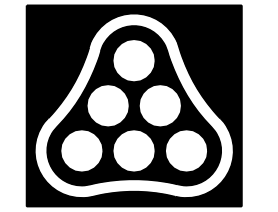


REMOVAL OF EXISTING STRUCTURES *		
STATION	SIDE	ITEM
178+95	Rt.	Sign

* For Information Only

- UTILITIES**
- Cable TV Cox Communications
 - Gas Kansas Gas Service
 - Power Westar Energy
 - San. Sewer Wichita Water & Sewer Dept.
 - Telephone AT&T
 - Water Wichita Water & Sewer Dept.

BM #11 RR spike in N. face Power Pole, S side 21st St. N, 3rd Pole E of S 1/4 Cor. Sec. 2-1275-R2E. 47.91' Rt. Sta. 183+23.46 Elev. 1360.68



No.	Revision	By	Date
21ST ST.			
PLAN			
STA. 178+00 TO STA. 184+00			
JAMES L. ARMOUR, P.E. - CITY ENGINEER CITY OF WICHITA PROJECT NO. 472-84636			
Professional Engineering Consultants, P.A.			
303 S. TOPEKA • WICHITA, KANSAS 67202 316-262-2691 • FAX 316-262-3003			
Designed by	JPS	Job No.	01616
Drawn by	SVB	Date	August, 2008
			Sh. 21 of 282