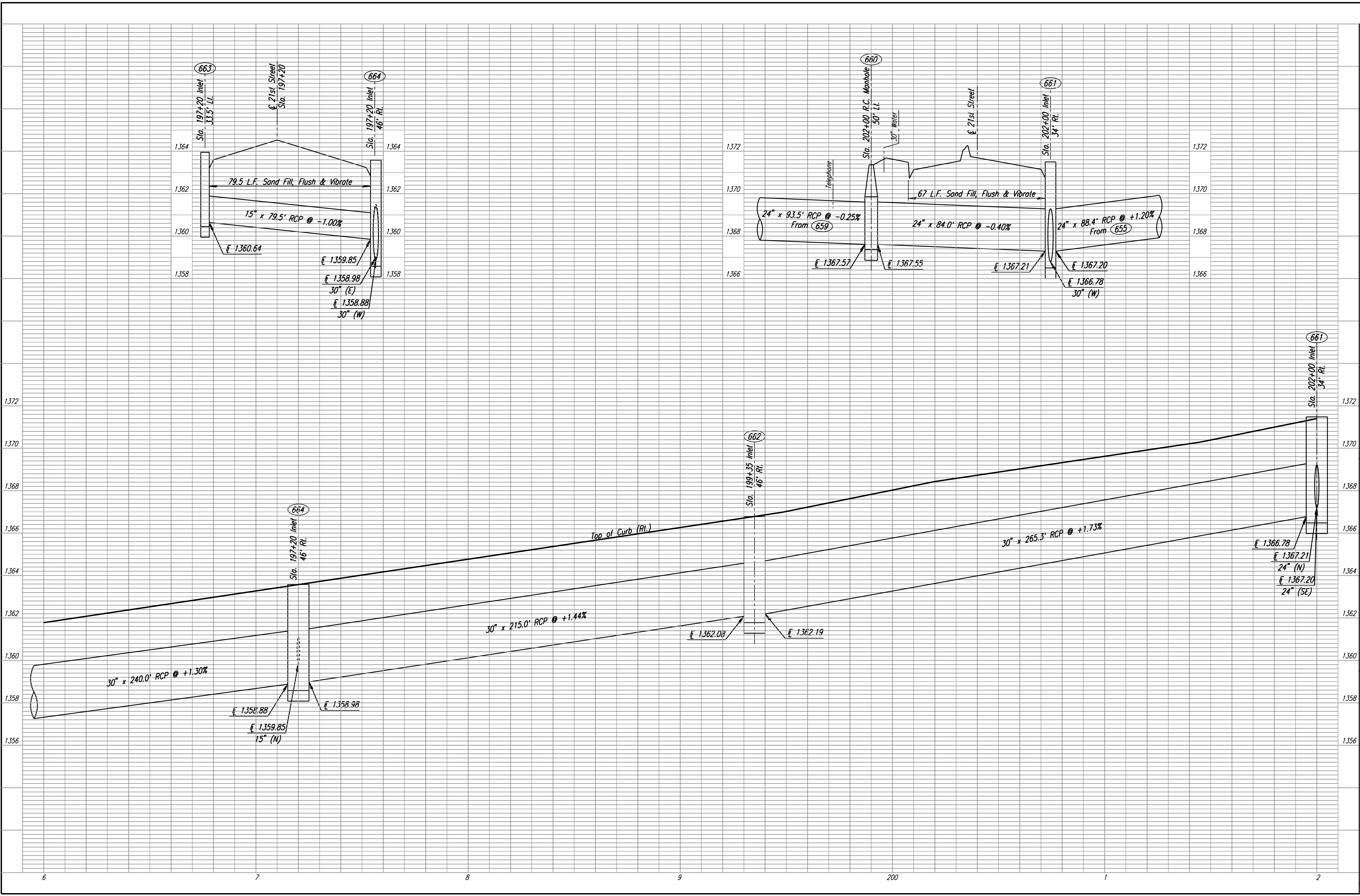


DSNR: JPS OPER: SVB SCALE: 1"=20'  
 I:/2001/01616/PROFILE/PR196.DGN 5-1-2007 10:14:51 LAST REV: 5-19-2008 BY: svb



**STORM SEWER PROFILE**  
 STA. 196+00 TO STA. 202+00

Professional Engineering Consultants, P.A.  
 303 S. TOPEKA AVENUE, WICHITA, KANSAS 67202  
 316.266.2891 • FAX 316.266.3660

Job No. 01616  
 Date August, 2008

Designed by JPS  
 Drawn by SVB