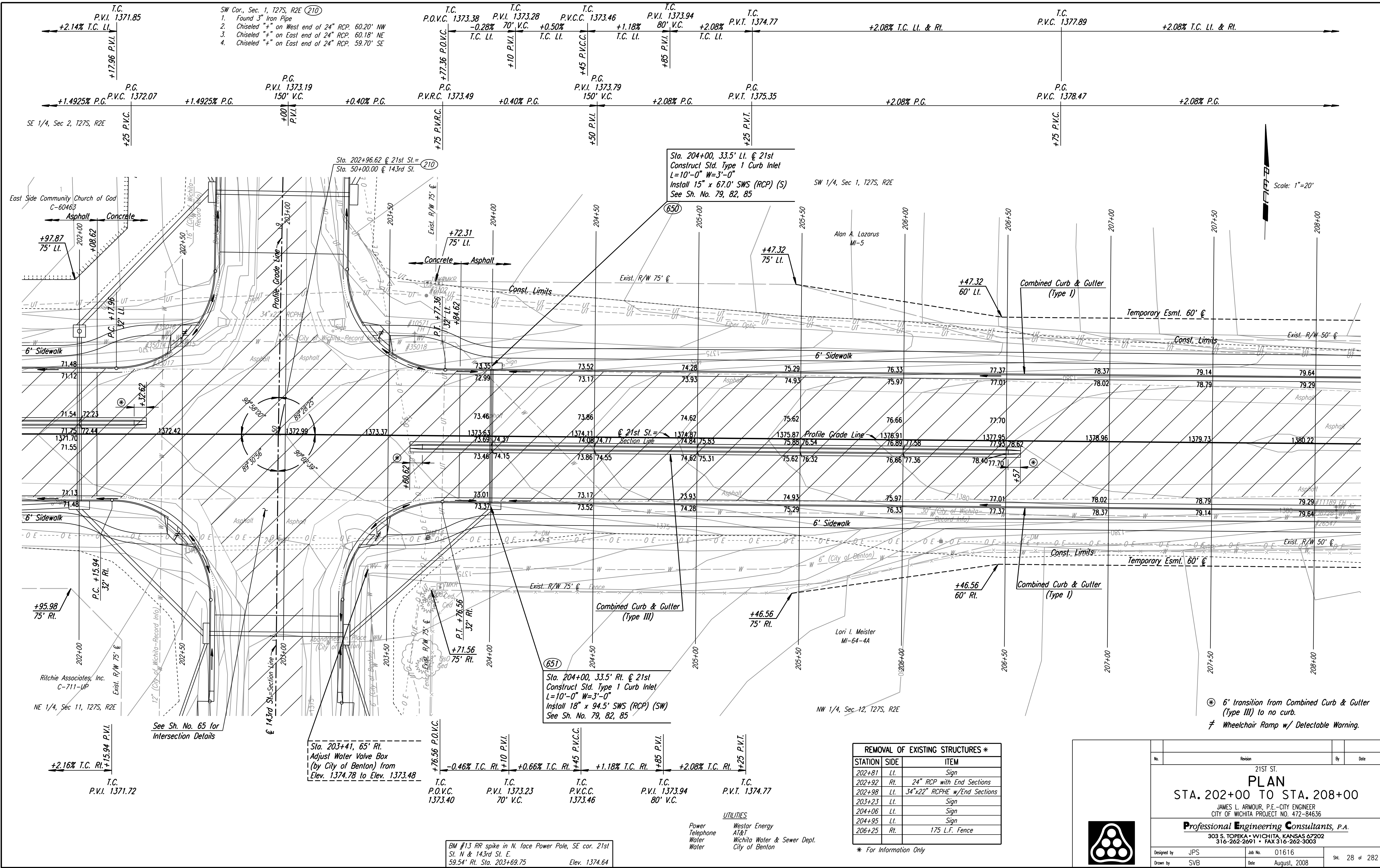


DSNR: JPS OPER: DRP SCALE: 1"=20'
 I:\2001\01616\PLAN\BDR202.DGN 5-12-2004 14:36:46 LAST REV: 5-19-2008 BY: svb



- SW Cor., Sec. 1, T27S, R2E (210)
1. Found 3" Iron Pipe
 2. Chiseled "+" on West end of 24" RCP. 60.20' NW
 3. Chiseled "+" on East end of 24" RCP. 60.18' NE
 4. Chiseled "+" on East end of 24" RCP. 59.70' SE

Sta. 204+00, 33.5' Lt. @ 21st
 Construct Std. Type 1 Curb Inlet
 L=10'-0" W=3'-0"
 Install 15" x 67.0' SWS (RCP) (S)
 See Sh. No. 79, 82, 85

Sta. 204+00, 33.5' Rt. @ 21st
 Construct Std. Type 1 Curb Inlet
 L=10'-0" W=3'-0"
 Install 18" x 94.5' SWS (RCP) (SW)
 See Sh. No. 79, 82, 85

Sta. 203+41, 65' Rt.
 Adjust Water Valve Box
 (by City of Benton) from
 Elev. 1374.78 to Elev. 1373.48

REMOVAL OF EXISTING STRUCTURES *		
STATION	SIDE	ITEM
202+81	Lt.	Sign
202+92	Rt.	24" RCP with End Sections
202+98	Lt.	34"x22" RCPHE w/End Sections
203+23	Lt.	Sign
204+06	Lt.	Sign
204+95	Lt.	Sign
206+25	Rt.	175 L.F. Fence

* For Information Only

- UTILITIES
- Power
 - Telephone
 - Water
 - Water
 - Westar Energy
 - AT&T
 - Wichita Water & Sewer Dept.
 - City of Benton

BM #13 RR spike in N. face Power Pole, SE cor. 21st
 St. N & 143rd St. E.
 59.54' Rt. Sta. 203+69.75 Elev. 1374.64

⊛ 6' transition from Combined Curb & Gutter (Type III) to no curb.
 ≠ Wheelchair Ramp w/ Detectable Warning.

No.	Revision	By	Date
21ST ST.			
PLAN			
STA. 202+00 TO STA. 208+00			
JAMES L. ARMOUR, P.E. - CITY ENGINEER CITY OF WICHITA PROJECT NO. 472-84636			
Professional Engineering Consultants, P.A.			
303 S. TOPKA • WICHITA, KANSAS 67202 316-262-2691 • FAX 316-262-3003			
Designed by	JPS	Job No.	01616
Drawn by	SVB	Date	August, 2008
			Sht. 28 of 282

