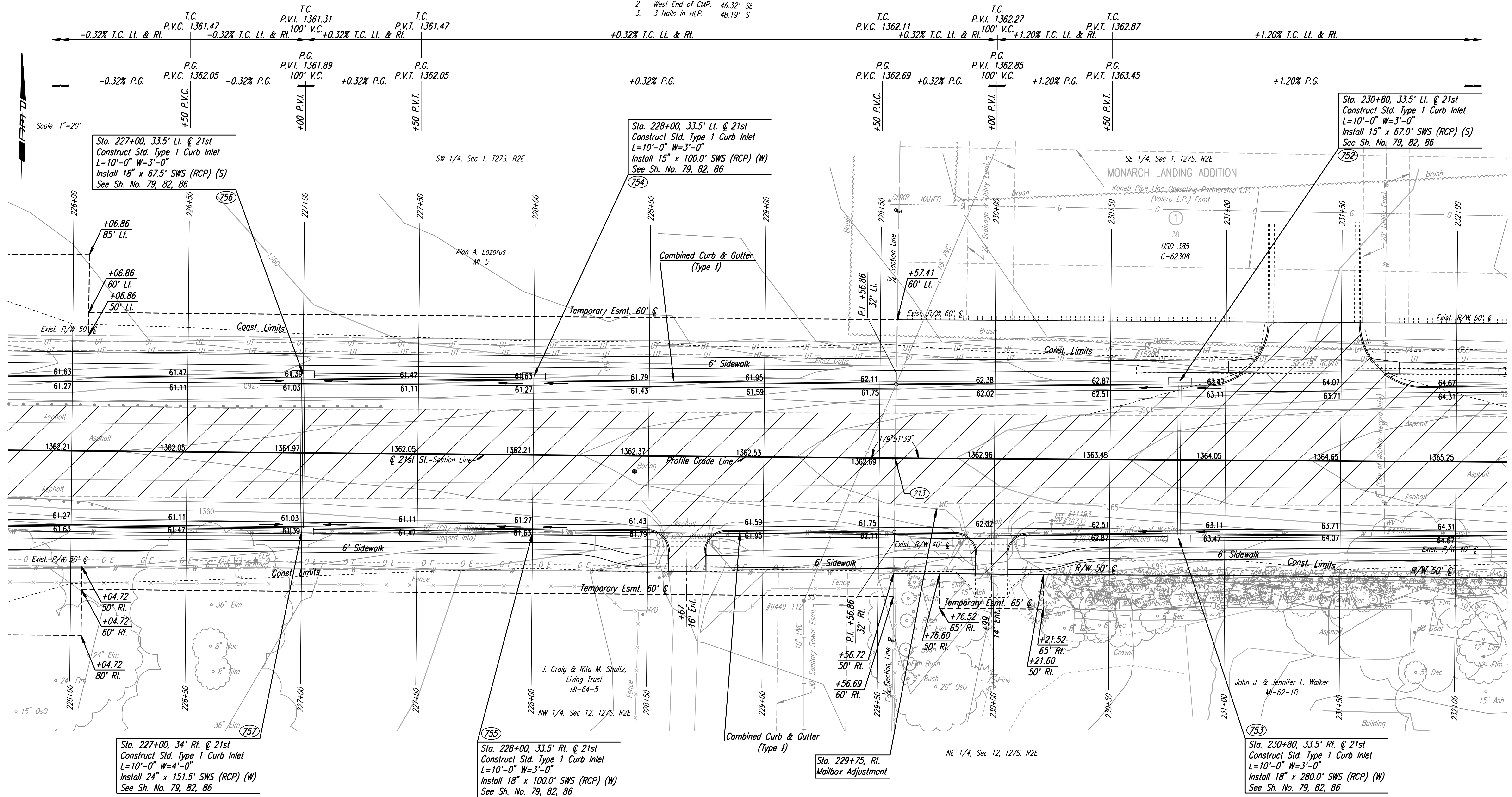


DSNR: JPS OPER: DRP SCALE: 1"=20'  
 I:\2001\01616\PLAN\BDR226.DGN 5-12-2004 14:36:46 LAST REV: 5-20-2008 BY: svb

5 1/4 Cor., Sec. 1, T27S, R2E (213)  
 1. Found 3/4" Iron Pipe with Moshing Cap over Exist. Cor.  
 2. West End of CMP. 46.32' SE  
 3. 3 Nails in HLP. 48.19' S



REMOVAL OF EXISTING STRUCTURES *		
STATION	SIDE	ITEM
226+00	Rt.	22 L.F. Guard Rail
226+00	Lt.	1.35 L.F. Guard Rail
228+66	Rt.	28"x20" CMMAC w/End Sections
229+98	Rt.	24" CMP with End Sections
231+41	Lt.	30"x19" RCPHE w/End Sections

\* For Information Only

**UTILITIES**  
 Gas KANEBC  
 Power Westar Energy  
 San. Sewer Wichita Water & Sewer Dept.  
 Telephone AT&T  
 Water Wichita Water & Sewer Dept.  
 Water City of Benton

No.	Revision	By	Date
21ST ST.			
<b>PLAN</b>			
<b>STA. 226+00 TO STA. 232+00</b>			
JAMES L. ARMOUR, P.E. - CITY ENGINEER CITY OF WICHITA PROJECT NO. 472-84636			
<b>Professional Engineering Consultants, P.A.</b> 303 S. TOPEKA • WICHITA, KANSAS 67202 316-262-2691 • FAX 316-262-3003			
Designed by	JPS	Job No.	01616
Drawn by	SVB	Date	August, 2008
			SH. 36 of 282

