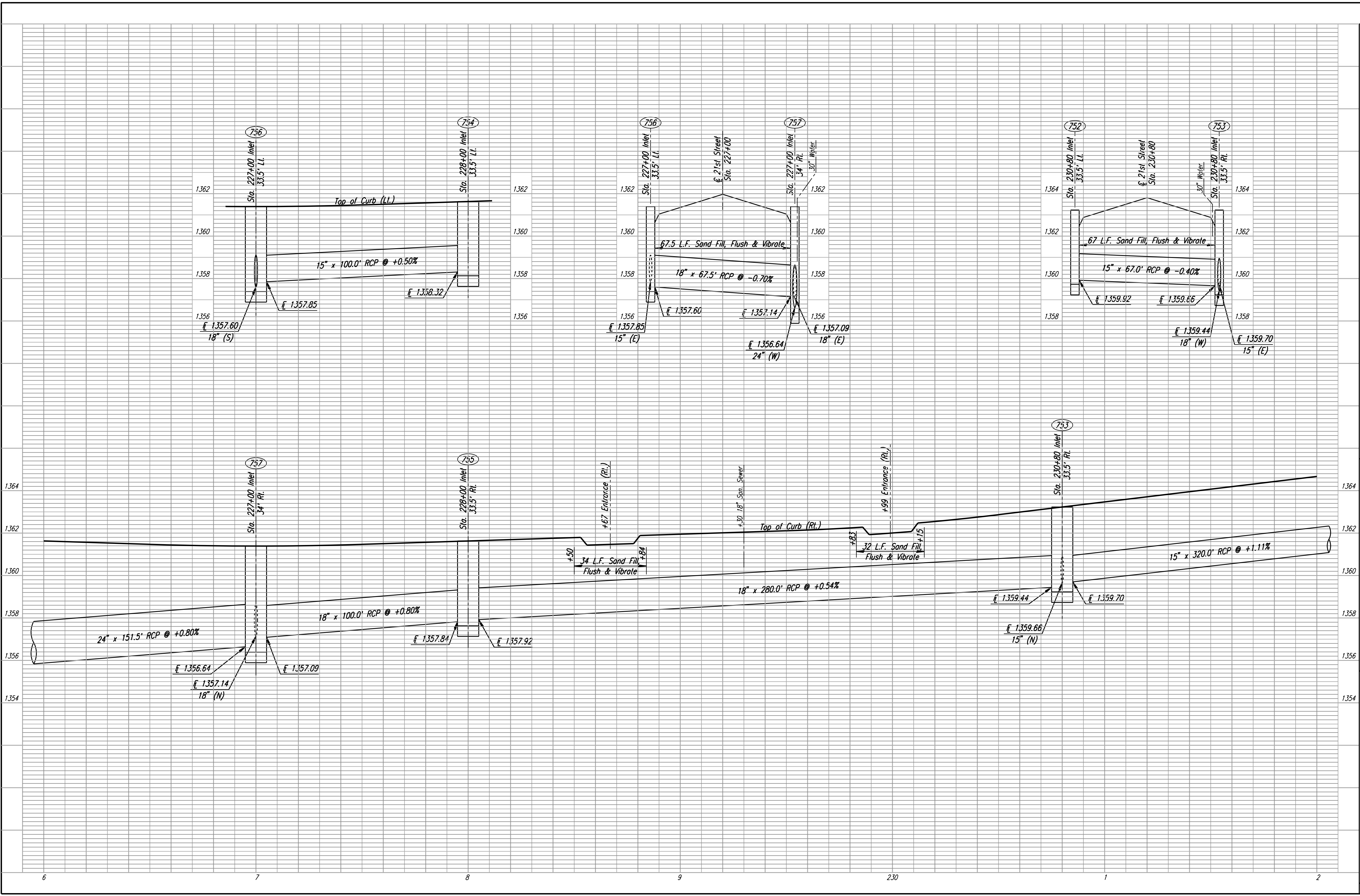


DSNR: JPS OPER: SVB SCALE: 1"=20'
 I:\2001\01616\PROFILE\PR226.DGN 4-6-2007 10:14:51 LAST REV: 5-20-2008 BY: svb



21ST STREET
STORM SEWER PROFILE
 STA. 226+00 TO STA. 232+00

Professional Engineering Consultants, P.A.
 303 S. TOPEKA AVENUE, WICHITA, KANSAS 67202
 316.266.2891 • FAX 316.266.3600

Job No. 01616
 Date August, 2008

Designed by JPS
 Drawn by SVB