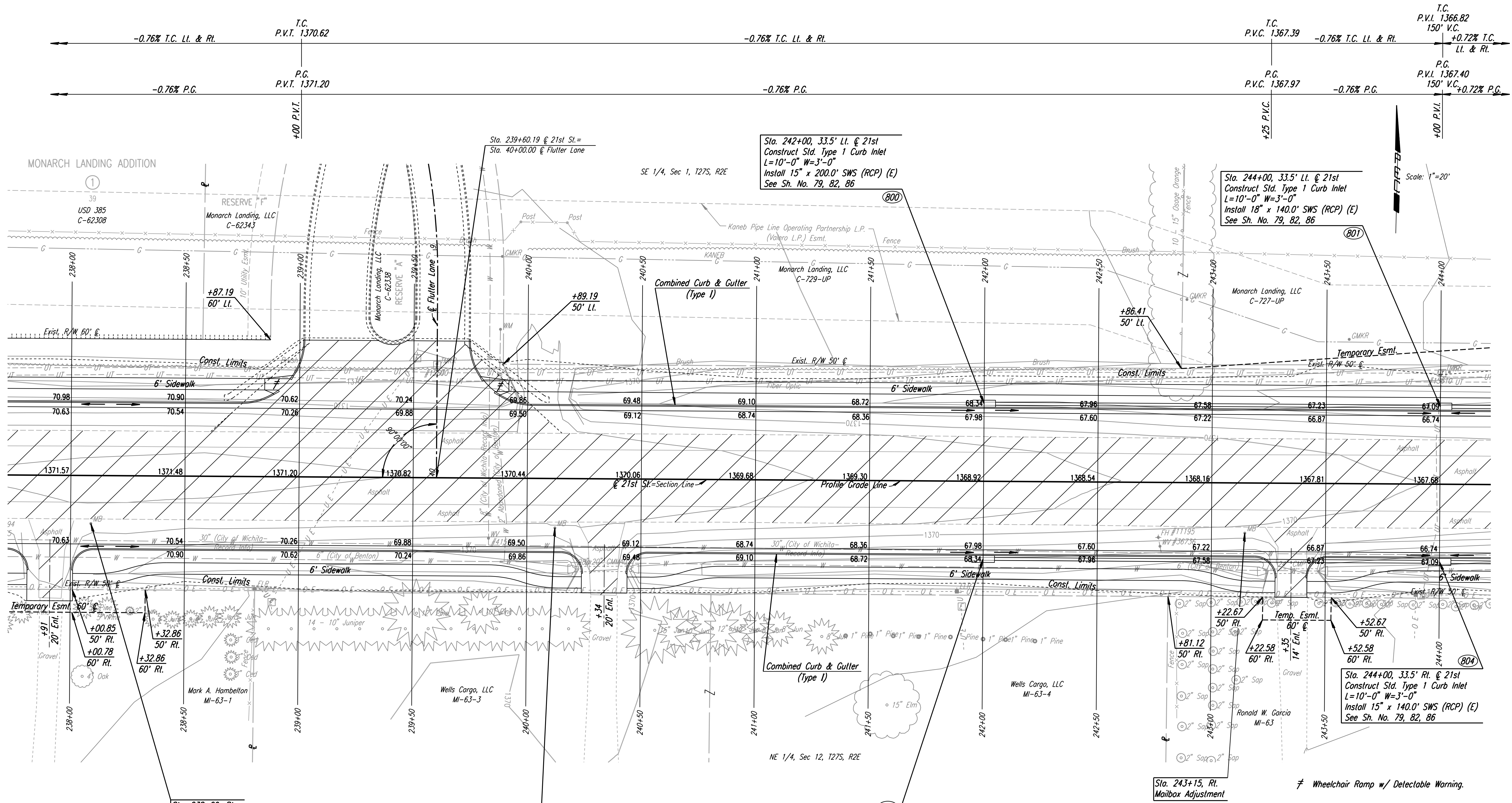


DSNR: JPS OPER: DRP SCALE: 1"=20' 5-20-2008 BY: svb
 I:\2001\01616\PLAN\BDR238.DGN 5-12-2004 14:36:46 LAST REV: 5-20-2008 BY: svb



REMOVAL OF EXISTING STRUCTURES *

STATION	SIDE	ITEM
239+04	Lt.	Slope Drain
239+72	Lt.	Slope Drain
240+34	Rt.	28" x 20" CMMAC w/End Sections
243+36	Rt.	24" CMP with End Sections

* For Information Only

- UTILITIES**
- Gas KANEBC
 - Power Westor Energy
 - Telephone AT&T
 - Water Wichita Water & Sewer Dept.
 - Water City of Benton

Sta. 243+15, Rt. Mailbox Adjustment
 ≠ Wheelchair Ramp w/ Detectable Warning.

21ST ST.	
PLAN	
STA. 238+00 TO STA. 244+00	
JAMES L. ARMOUR, P.E. - CITY ENGINEER CITY OF WICHITA PROJECT NO. 472-84636	
Professional Engineering Consultants, P.A. 303 S. TOPKA • WICHITA, KANSAS 67202 316-262-2691 • FAX 316-262-3003	
Designed by JPS	Job No. 01616
Drawn by SVB	Date August, 2008
SHEET 40 OF 282	

