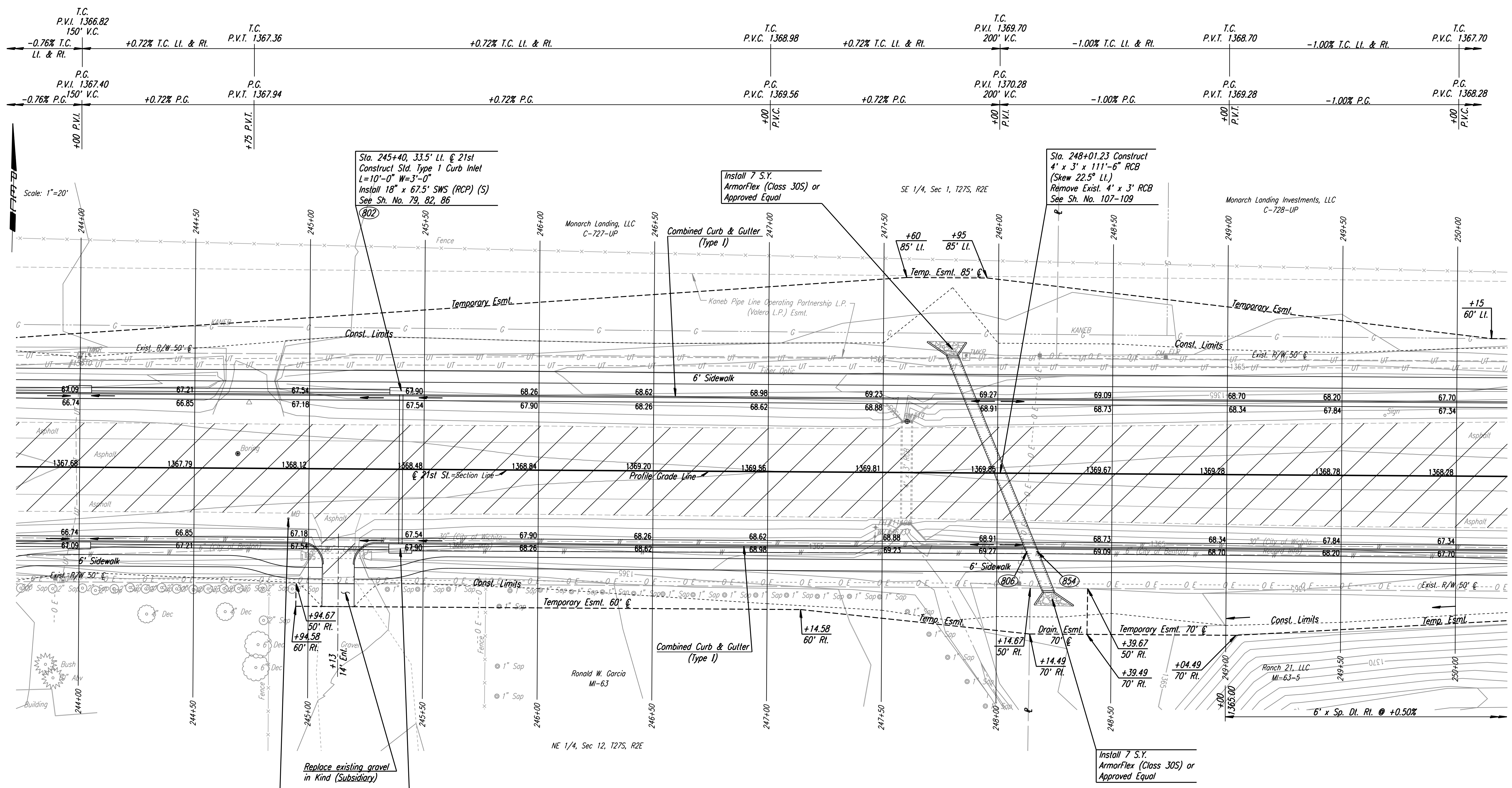


DSNR: JPS OPER: DRP SCALE: 1"=20'  
 I:\2001\01616\PLAN\BDR244.DGN 5-12-2004 14:36:46 LAST REV: 5-20-2008 BY: svb



REMOVAL OF EXISTING STRUCTURES *		
STATION	SIDE	ITEM
245+12	Rt.	28"x20" CMMAC w/End Sections
247+60	Ch.	4'x3' RCB
249+69	Lt.	Sign

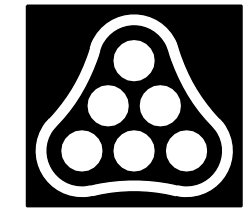
\* For Information Only

Sta. 244+91, Rt.  
Mailbox Adjustment

(805)  
 Sta. 245+40, 34' Rt. @ 21st  
 Construct Std. Type 1 Curb Inlet  
 L=10'-0" W=4'-0"  
 Install 24" x 273.1' SWS (RCP) (E)  
 Connect to 4' x 3' RCB (806)  
 See Sh. No. 79, 82, 86

BM #19 Chis. "a" center N headwall RCBC under 21st  
 St. N, W of 159th St. E.  
 6.79' Rt. Sta. 247+60.51  
 Elev. 1368.37

- UTILITIES**
- Gas KANEb
  - Power Westar Energy
  - Telephone AT&T
  - Water Wichita Water & Sewer Dept.
  - Water City of Benton



No.	Revision	By	Date
21ST ST. <b>PLAN</b> <b>STA. 244+00 TO STA. 250+00</b> JAMES L. ARMOUR, P.E. - CITY ENGINEER CITY OF WICHITA PROJECT NO. 472-84636 <b>Professional Engineering Consultants, P.A.</b> 303 S. TOPEKA • WICHITA, KANSAS 67202 316-262-2691 • FAX 316-262-3003			
Designed by	JPS	Job No.	01616
Drawn by	SVB	Date	August, 2008
			Sht. 42 of 282