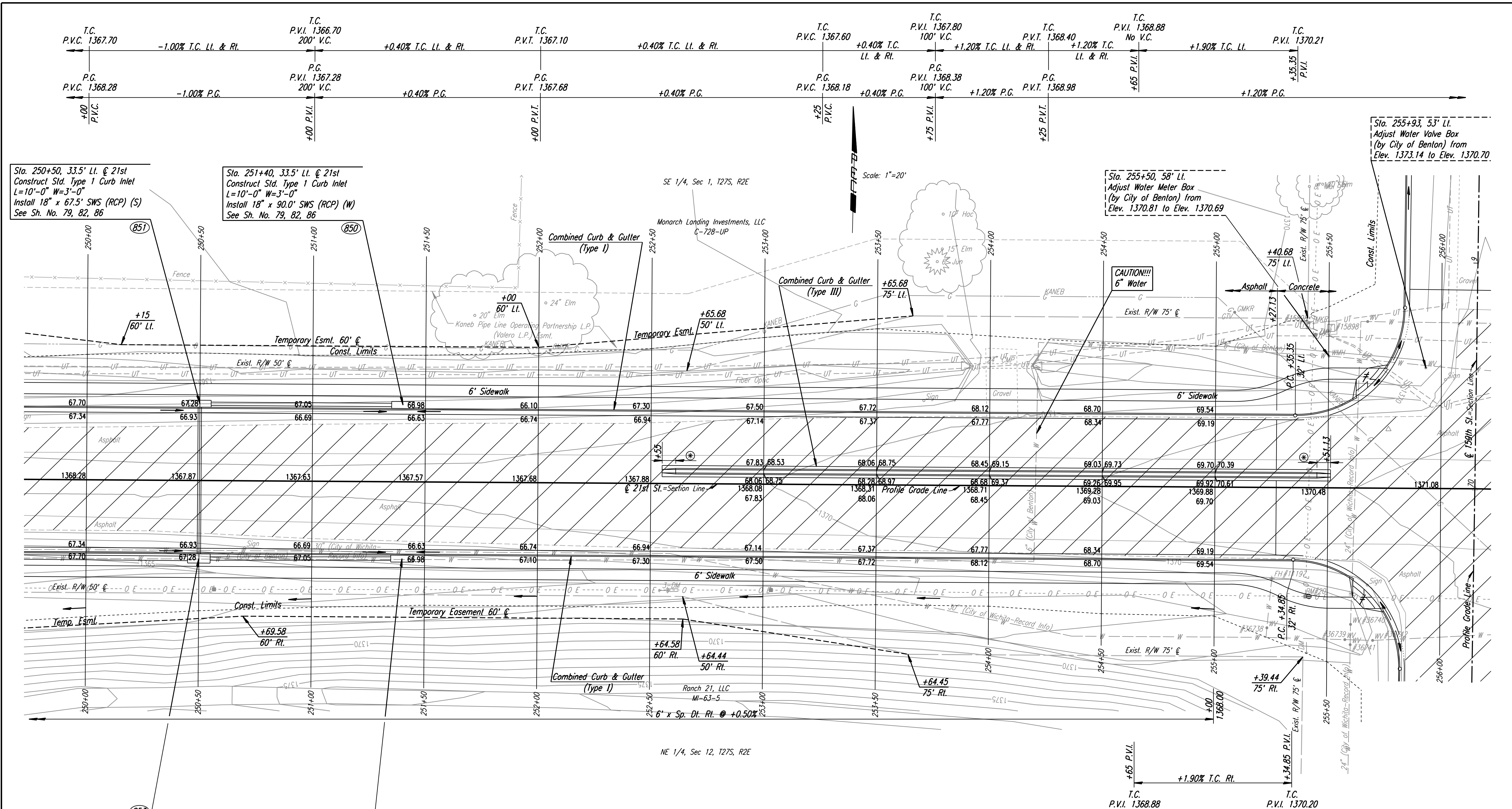


DSNR: JPS OPER: DRP SCALE: 1"=20' 5-20-2008 BY: svb  
 I:\2001\01616\PLAN\BDR250.DGN 14:36:46 LAST REV: 5-20-2008



Sta. 250+50, 33.5' Lt. @ 21st  
 Construct Std. Type 1 Curb Inlet  
 L=10'-0" W=3'-0"  
 Install 18" x 67.5' SWS (RCP) (S)  
 See Sh. No. 79, 82, 86

Sta. 251+40, 33.5' Lt. @ 21st  
 Construct Std. Type 1 Curb Inlet  
 L=10'-0" W=3'-0"  
 Install 18" x 90.0' SWS (RCP) (W)  
 See Sh. No. 79, 82, 86

Sta. 255+50, 58' Lt.  
 Adjust Water Meter Box  
 (by City of Benton) from  
 Elev. 1370.81 to Elev. 1370.69

Sta. 255+93, 53' Lt.  
 Adjust Water Valve Box  
 (by City of Benton) from  
 Elev. 1373.14 to Elev. 1370.70

Sta. 250+50, 34' Rt. @ 21st  
 Construct Std. Type 1 Curb Inlet  
 L=10'-0" W=4'-0"  
 Install 24" x 232.5' SWS (RCP) (W)  
 Connect to 4" x 3' RCB (854)  
 See Sh. No. 79, 82, 86

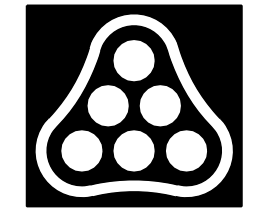
Sta. 251+40, 33.5' Rt. @ 21st  
 Construct Std. Type 1 Curb Inlet  
 L=10'-0" W=3'-0"  
 Install 18" x 90.0' SWS (RCP) (W)  
 See Sh. No. 79, 82, 86

REMOVAL OF EXISTING STRUCTURES *		
STATION	SIDE	ITEM
250+70	Rt.	Sign
253+71	Lt.	Sign
254+05	Lt.	24" CMP with End Sections
255+68	Rt.	Sign

- UTILITIES
- Gas KANEBC
  - Power Westar Energy
  - Telephone AT&T
  - Water Wichita Water & Sewer Dept.
  - Water City of Benton

- \* 6' transition from Combined Curb & Gutter (Type III) to no curb.
- ≠ Wheelchair Ramp w/ Detectable Warning.

BM #20 Step nail in E face Power Pole @ SW cor.  
 21st St. N. & 159th St. E.  
 48.25' Rt. Sta. 255+1.95 Elev. 1370.31



21ST ST.  
**PLAN**  
 STA. 250+00 TO STA. 256+00

JAMES L. ARMOUR, P.E. - CITY ENGINEER  
 CITY OF WICHITA PROJECT NO. 472-84636

**Professional Engineering Consultants, P.A.**  
 303 S. TOPEKA • WICHITA, KANSAS 67202  
 316-262-2691 • FAX 316-262-3003

Designed by	JPS	Job No.	01616
Drawn by	SVB	Date	August, 2008

Sht. 44 of 282