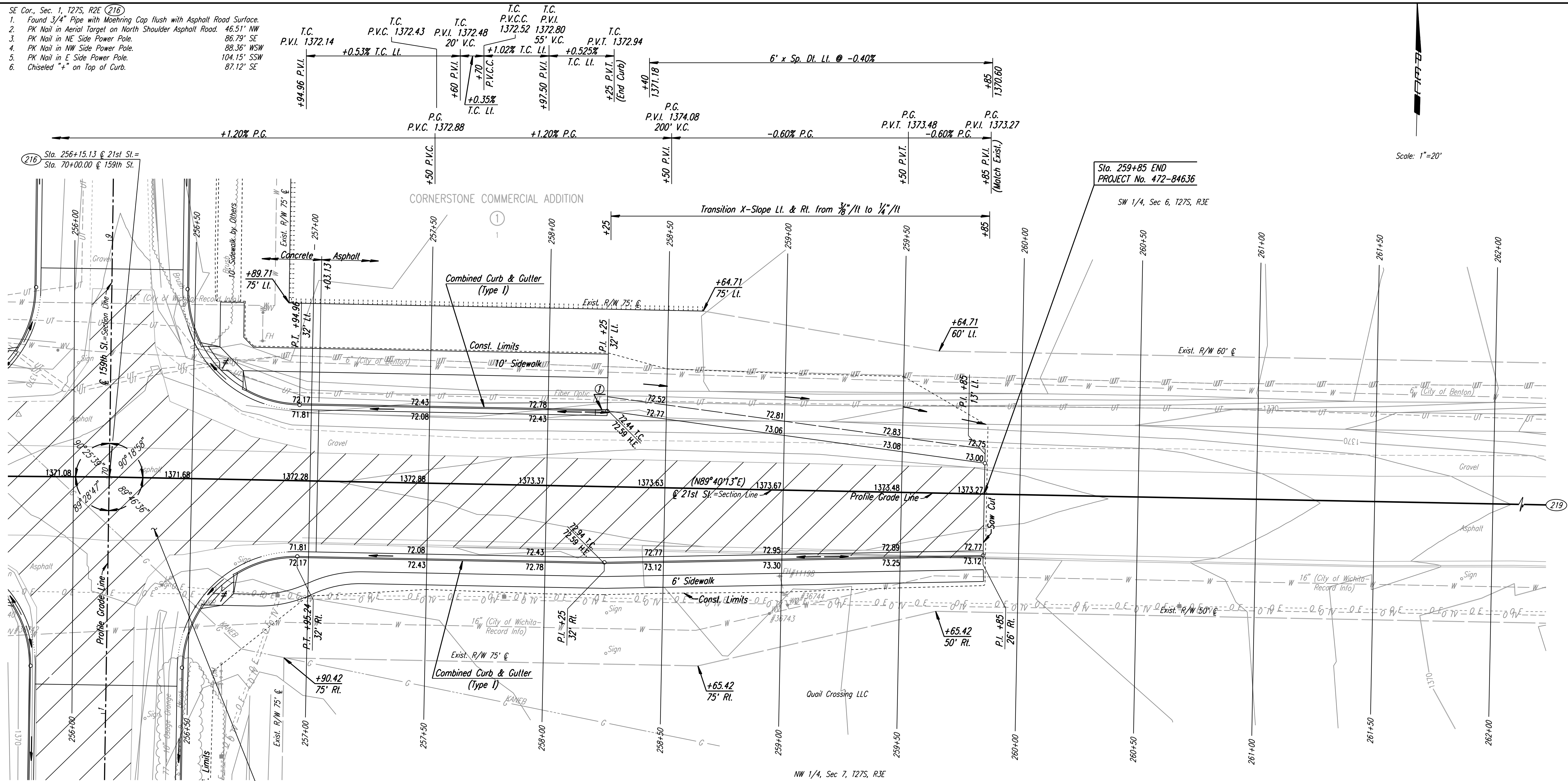


- SE Cor., Sec. 1, T27S, R2E (216)
1. Found 3/4" Pipe with Moehring Cap flush with Asphalt Road Surface.
  2. PK Nail in Aerial Target on North Shoulder Asphalt Road. 46.51' NW
  3. PK Nail in NE Side Power Pole. 86.79' SE
  4. PK Nail in NW Side Power Pole. 88.36' WSW
  5. PK Nail in E Side Power Pole. 104.15' SSW
  6. Chiseled "+" on Top of Curb. 87.12' SE

216 Sta. 256+15.13 @ 21st St. =  
Sta. 70+00.00 @ 159th St.

Sta. 259+85 END  
PROJECT No. 472-84636

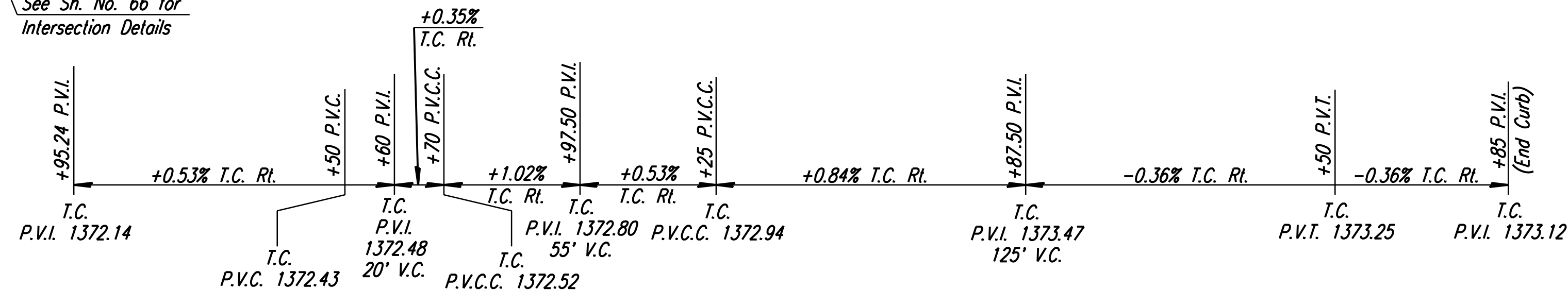
Scale: 1"=20'



See Sh. No. 66 for  
Intersection Details

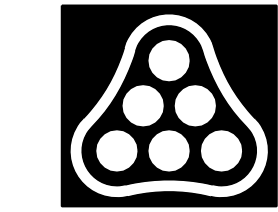
REMOVAL OF EXISTING STRUCTURES *		
STATION	SIDE	ITEM
256+02	Lt.	Sign
256+35	Rt.	Sign
256+69	Rt.	Sign

\* For Information Only



- ≠ Wheelchair Ramp w/ Detectable Warning.
- ① 5' transition from 6" curb to no curb.

- UTILITIES
- Cable TV Cox Communications
  - Gas KANCB
  - Power Westar Energy
  - Telephone AT&T
  - Water Wichita Water & Sewer Dept.
  - Water City of Benton



No.	Revision	By	Date
21ST ST.			
<b>PLAN</b>			
<b>STA. 256+00 TO STA. 262+00</b>			
JAMES L. ARMOUR, P.E. - CITY ENGINEER CITY OF WICHITA PROJECT NO. 472-84636			
<b>Professional Engineering Consultants, P.A.</b>			
303 S. TOPEKA • WICHITA, KANSAS 67202 316-262-2691 • FAX 316-262-3003			
Designed by	JPS	Job No.	01616
Drawn by	SVB	Date	August, 2008

Sht. 46 of 282

DSNR: JPS OPER: DRP SCALE: 1"=20'  
 I:\2001\01616\PLAN\BDR256.DGN 5-12-2004 14:36:46 LAST REV: 5-20-2008 BY: svb