

- W 1/4 Cor., Sec. 2, T27S, R2E (203)
1. Found Stone with "+" in Center & #4 Bar at SW Corner, ± 0.75' Below Surface
Center Travel Way 127th St.
 2. Center of Brass Survey Marker in Concrete 30.07' E
 3. Mag. Nail in S Face of Fence Line Post 42.45' NE
 4. Mag. Nail in N Face of 12" Hedge Tree 32.71' WSW
 5. "X" Cut in S Face of Pipeline Marker 47.26' W

Scale: 1"=20'

SW 1/4, Sec 2, T27S, R2E

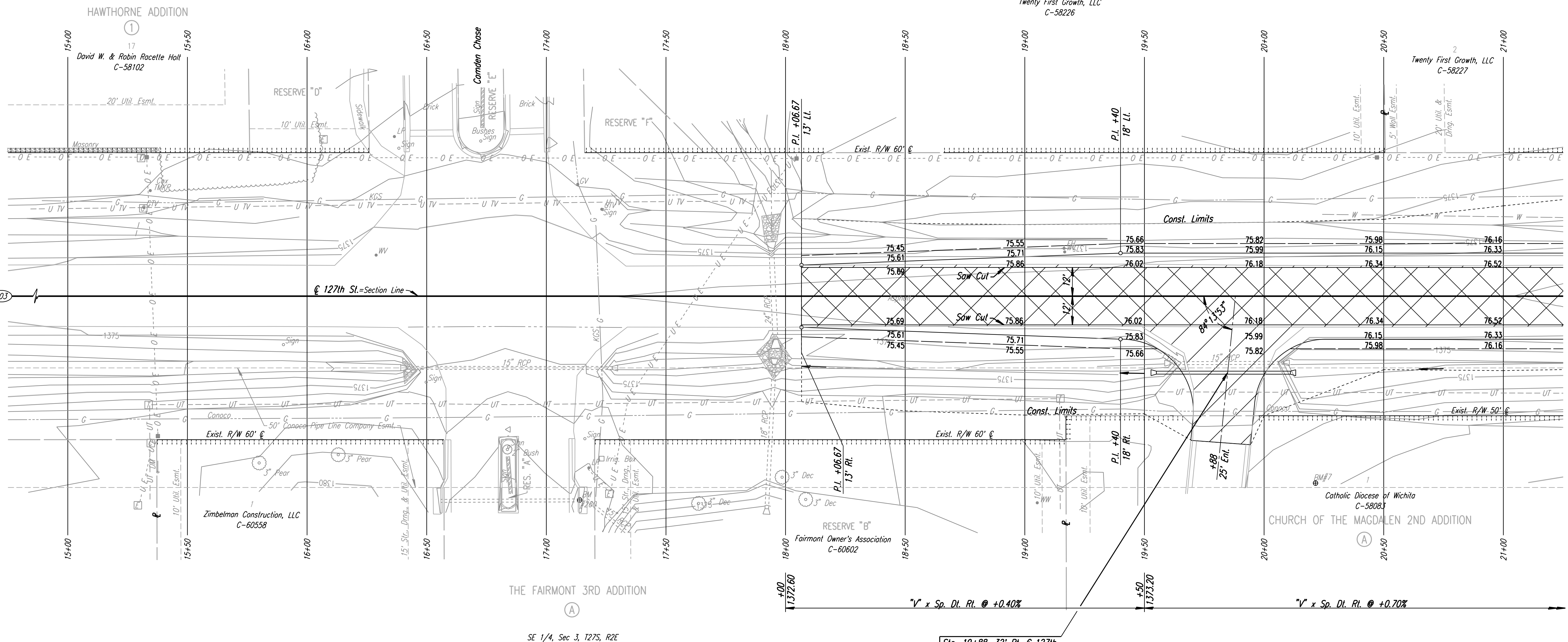
HAWTHORNE ADDITION

(6)

Twenty First Growth, LLC
C-58226

David W. & Robin Racette Holt
C-58102

Twenty First Growth, LLC
C-58227



REMOVAL OF EXISTING STRUCTURES *		
STATION	SIDE	ITEM
19+85	Rt.	15" RCP

* For Information Only

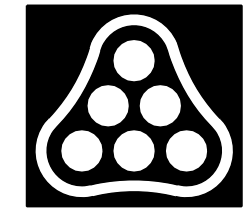
- UTILITIES
- Cable TV
 - Gas
 - Gas
 - Power
 - Telephone
 - Water
 - Cox Communications
 - Conoco
 - Kansas Gas Service
 - Westar Energy
 - AT&T
 - RWD #5

BM #260 Chiseled "□" on center of curb inlet on S side of 127th St. Court, W side of 127th St. E. 85' Rt. Sta. 17+14 Elev. 1378.48

BM #7 Chiseled "□" on center of curb inlet face, near the NE corner of church parking lot. 78' Rt. Sta. 20+22 Elev. 1379.55

Sta. 19+88, 32' Rt. @ 127th
Install 15" x 56" E.P. (RCP)
with End Sections
See Sh. No. 87, 115

DSNR: JPS OPER: SVB SCALE: 1"=20' I:\2001\01616\PLAN\SR127TH10.DGN 5-10-2008 8:37:08 LAST REV: 5-20-2008 BY: svb



No.	Revision	By	Date
127TH ST. PLAN STA. 15+00 TO STA. 21+00 JAMES L. ARMOUR, P.E. - CITY ENGINEER CITY OF WICHITA PROJECT NO. 472-84636 Professional Engineering Consultants, P.A. 303 S. TOPEKA • WICHITA, KANSAS 67202 316-262-2691 • FAX 316-262-3003			
Designed by	JPS	Job No.	01616
Drawn by	SVB	Date	August, 2008
			SH. 47 of 282