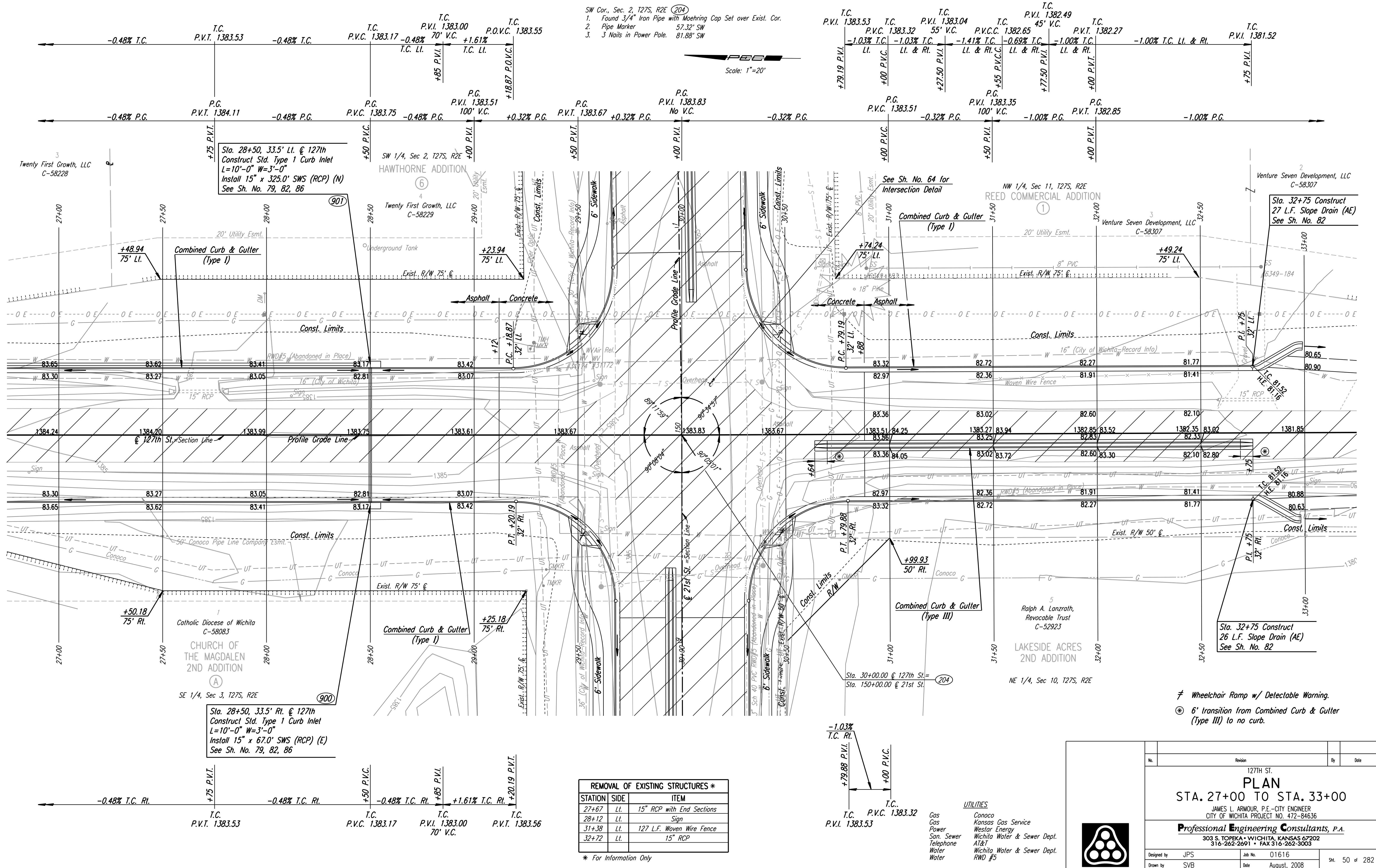


DSNR: JPS OPER: DRP SCALE: 1"=20' 5-18-2004 8:57:42 LAST REV: 5-20-2008 BY: svb
 I:\2001\01616\PLAN\SR127H2.DGN

SW Cor., Sec. 2, T27S, R2E (204)
 1. Found 3/4" Iron Pipe with Moehring Cap Set over Exist. Cor.
 2. Pipe Marker 57.32' SW
 3. 3 Nails in Power Pole. 81.88' SW



REMOVAL OF EXISTING STRUCTURES *		
STATION	SIDE	ITEM
27+67	LT.	15" RCP with End Sections
28+12	LT.	Sign
31+38	LT.	127 L.F. Woven Wire Fence
32+72	LT.	15" RCP

* For Information Only

- UTILITIES**
- Gas
 - Conoco
 - Gas
 - Kansas Gas Service
 - Power
 - Weslar Energy
 - San. Sewer
 - Wichita Water & Sewer Dept.
 - Telephone
 - AT&T
 - Water
 - Wichita Water & Sewer Dept.
 - RWD #5

≠ Wheelchair Ramp w/ Detectable Warning.
 ⊛ 6' transition from Combined Curb & Gutter (Type III) to no curb.

No.	Revision	By	Date
127TH ST. PLAN STA. 27+00 TO STA. 33+00 JAMES L. ARMOUR, P.E. - CITY ENGINEER CITY OF WICHITA PROJECT NO. 472-84636 Professional Engineering Consultants, P.A. 303 S. TOPEKA • WICHITA, KANSAS 67202 316-262-2691 • FAX 316-262-3003			
Designed by	JPS	Job No.	01616
Drawn by	SVB	Date	August, 2008
			SH. 50 of 282