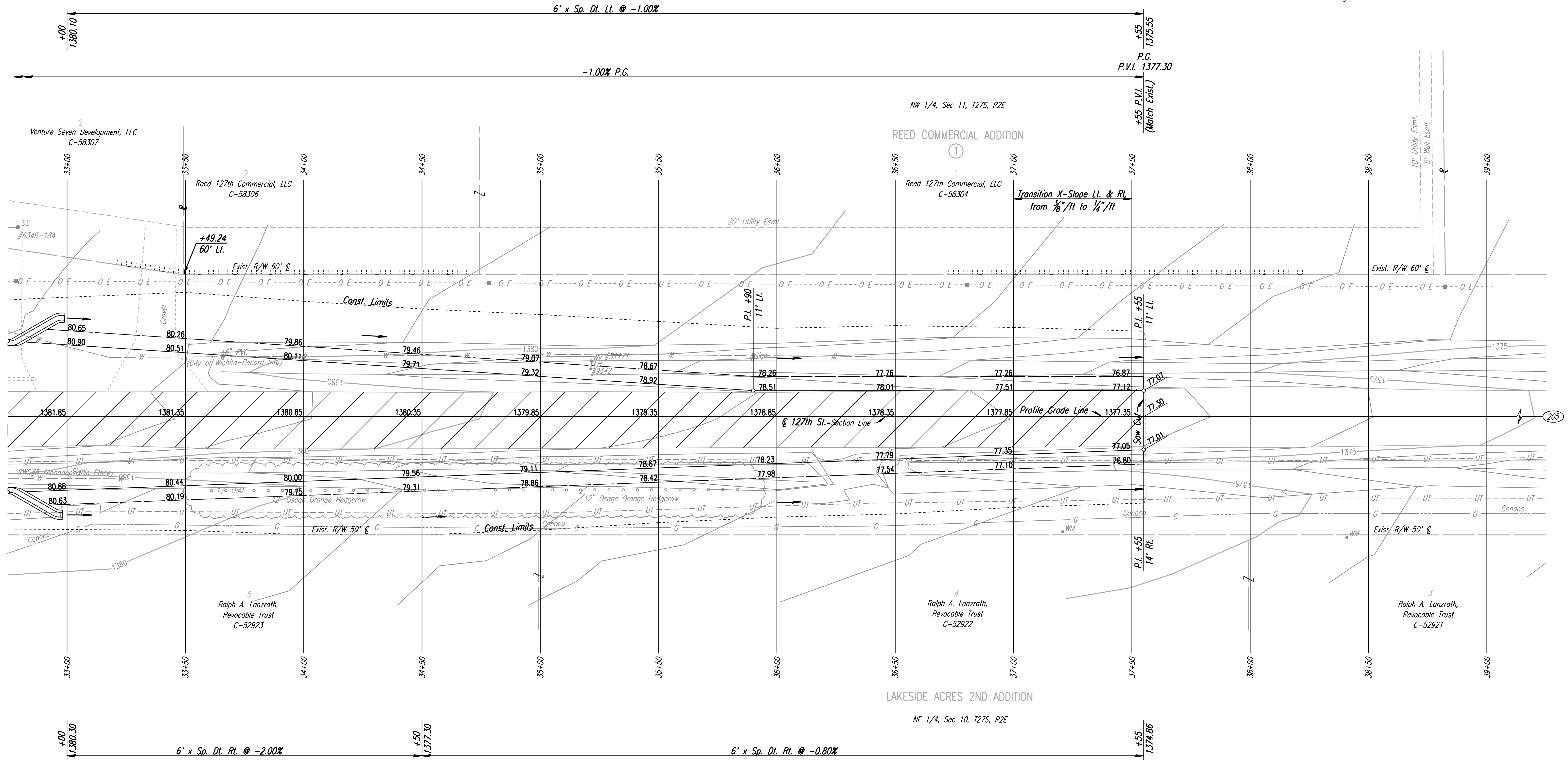


- W 1/4 Cor., Sec. 11, T27S, R2E (205)
1. Found 3/8" I.P. in Thimble, ± 0.25' Below Surface
 2. Center Travel Way 127th St.
 3. 3 Nails in W Face of Power Pole 55.45' NE
 4. 3 Nails in E Face of Power Pole 36.35' NW
 5. Top Center of Fence Corner Post 33.35' W
 6. N Edge of N Rail of RR Tracks E-W 24.13' S



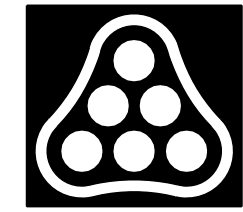
REMOVAL OF EXISTING STRUCTURES *

STATION	SIDE	ITEM
33+01	Rt.	Sign

* For Information Only

- UTILITIES
- Gas: Conoco
 - Power: Westar Energy
 - Telephone: AT&T
 - Water: Wichita Water & Sewer Dept.
 - Water: RWD #5

DSNR: JPS OPER: DRP SCALE: 1"=20' 5-18-2004
 I:\2001\01616\PLAN\SR127TH3.DGN 5-18-2004 9:48:39 LAST REV: 5-20-2008 BY: svb



No.	Revision	By	Date
127TH ST. PLAN STA. 33+00 TO STA. 39+00 JAMES L. ARMOUR, P.E. - CITY ENGINEER CITY OF WICHITA PROJECT NO. 472-84636 Professional Engineering Consultants, P.A. 303 S. TOPEKA • WICHITA, KANSAS 67202 316-262-2691 • FAX 316-262-3003			
Designed by	JPS	Job No.	01616
Drawn by	SVB	Date	August, 2008
			Sht. 52 of 282