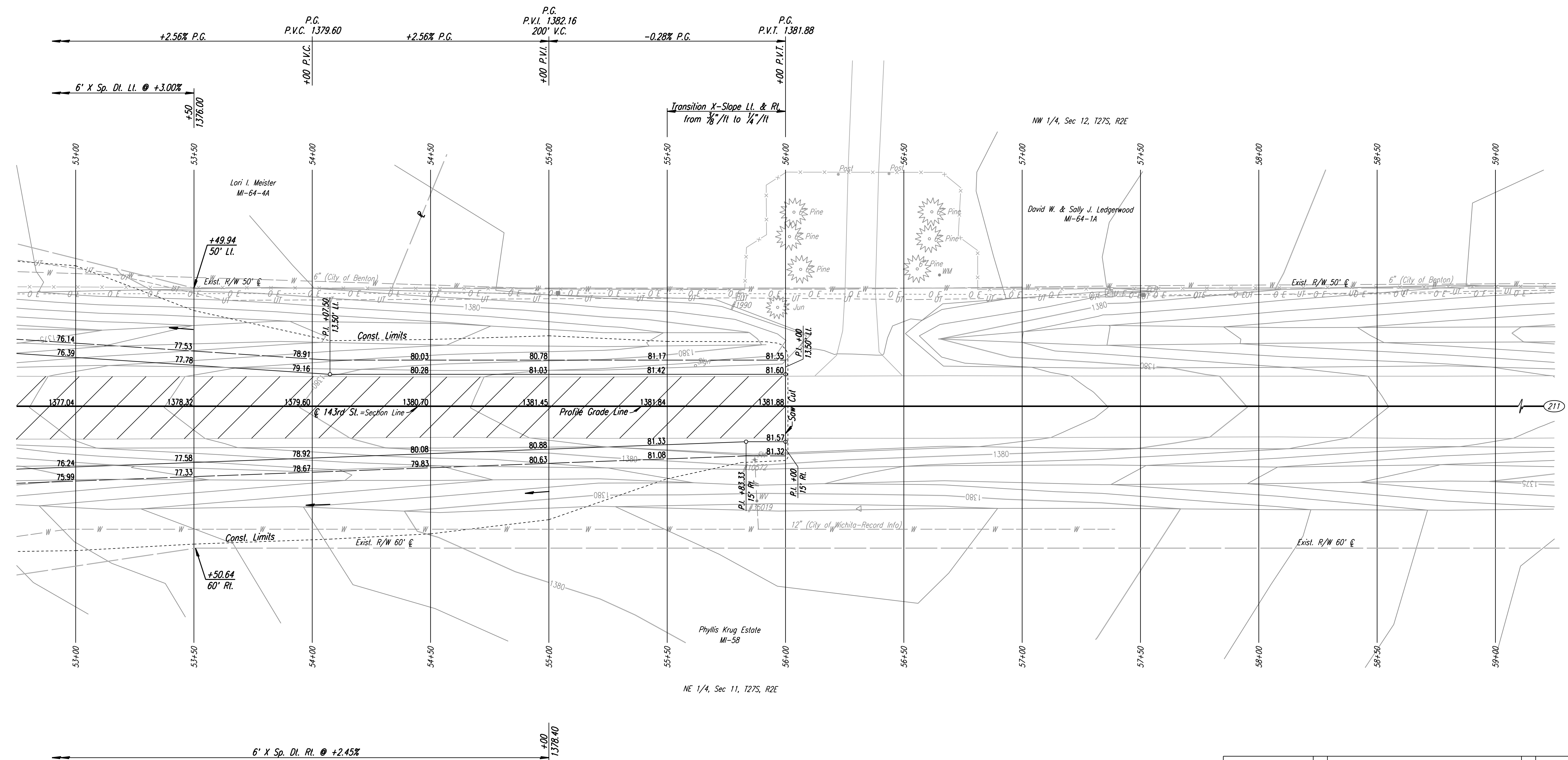


- W 1/4 Cor., Sec. 12, T27S, R2E (211)
1. Found 1/2" Bent LP, 18" Below Surface
 2. Reset 1/4" I.P. w/PEC Cap, 3" Below Surface
 3. Center Travel Way 143rd St.
 4. Nail & Shiner in W Face of Power Pole 49.90' ENE
 5. 3 Nails in S Face of S Pole of 2 Pole Structure 43.01' NW
 6. Center of RR Track E-W ±61.0' S



DSNR: JPS OPER: DRP SCALE: 1"=20'
 I:\2001\01616\PLAN\SR143RD3.DGN 5-18-2004 16:24:52 LAST REV: 5-20-2008 BY: svb

REMOVAL OF EXISTING STRUCTURES *		
STATION	SIDE	ITEM
53+00	Lt.	24 L.F. Fence
55+62	Lt.	Sign

* For Information Only

- UTILITIES**
- Power: Westar Energy
 - Telephone: AT&T
 - Water: Wichita Water & Sewer Dept.
 - Water: City of Benton

No.	Revision	By	Date
143RD ST. PLAN STA. 53+00 TO STA. 59+00 JAMES L. ARMOUR, P.E. - CITY ENGINEER CITY OF WICHITA PROJECT NO. 472-84636 Professional Engineering Consultants, P.A. 303 S. TOPEKA • WICHITA, KANSAS 67202 316-262-2691 • FAX 316-262-3003			
Designed by	JPS	Job No.	01616
Drawn by	SVB	Date	August, 2008
			SH. 56 of 282

