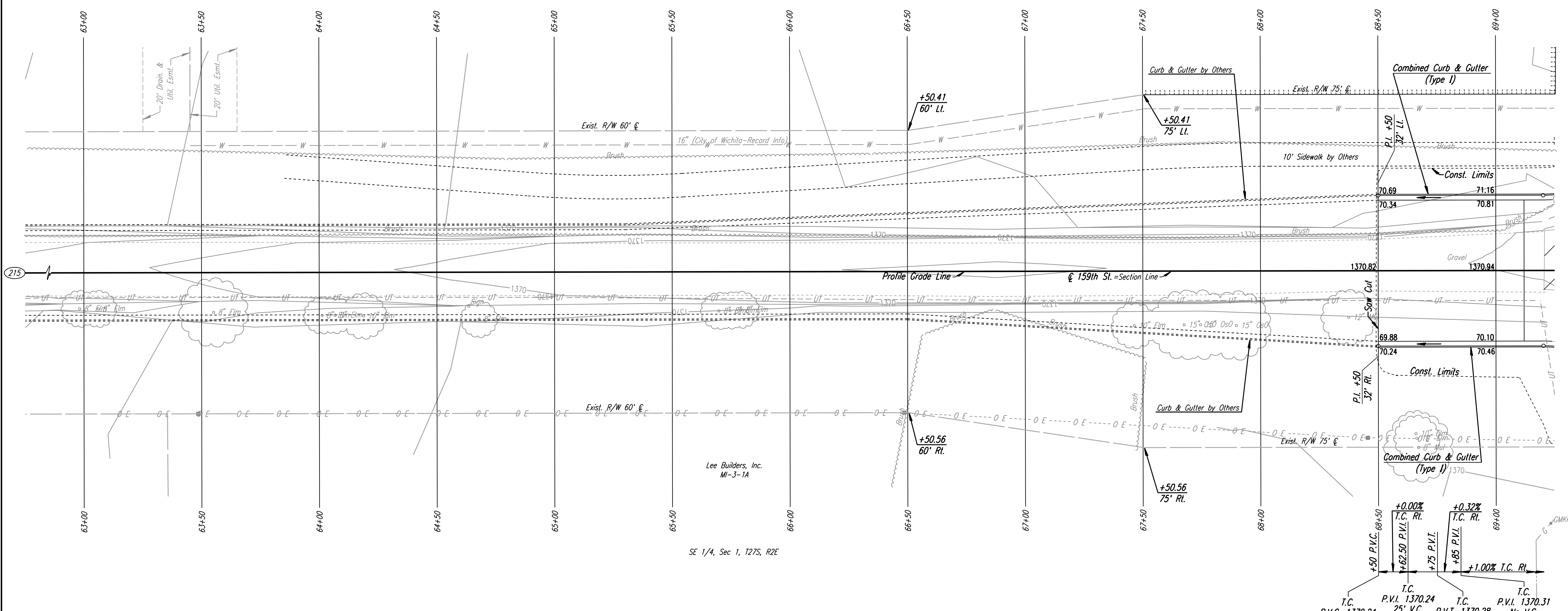
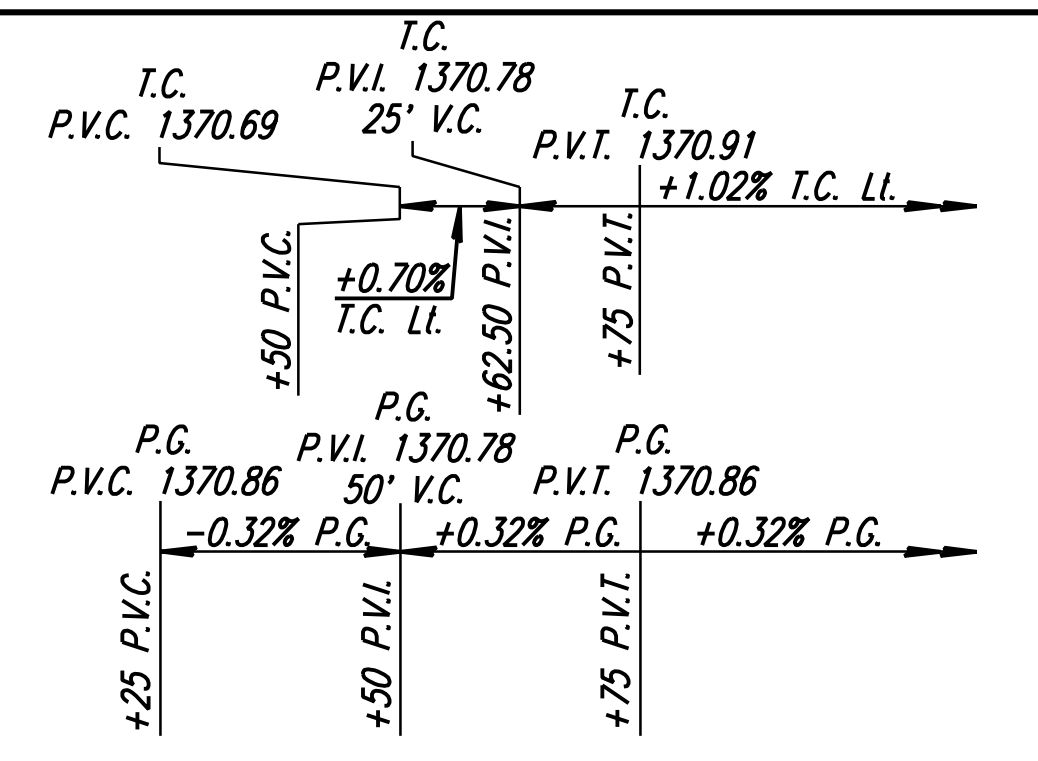


- E 1/4 Cor., Sec. 1, T27S, R2E (215)
1. Found Stone with Nail in Center & 1" I.P. on S Side, ±10" Below Surface
 2. Center Travel Way 159th St. ±3' E
 3. In Line with Hedge Row to E
 4. In Line with Cropline to W
 5. PK Nail in 4" Hedge Tree 23.52' ESE
 6. 40d Nail in 6" Hackberry Tree 35.78' SE

Scale: 1"=20'

SW 1/4, Sec 6, T27S, R3E
CORNERSTONE COMMERCIAL ADDITION

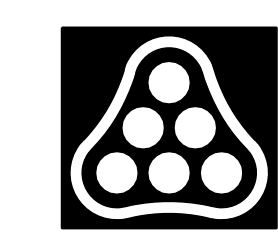


Lee Builders, Inc.
MI-3-1A

SE 1/4, Sec 1, T27S, R2E

UTILITIES

Power	Westar Energy
Telephone	AT&T
Water	Wichita Water & Sewer Dept.



No.	Revision	By	Date
159TH ST. PLAN STA. 63+00 TO STA. 69+00			
JAMES L. ARMOUR, P.E. - CITY ENGINEER CITY OF WICHITA PROJECT NO. 472-84636			
Professional Engineering Consultants, P.A. 303 S. TOPEKA • WICHITA, KANSAS 67202 316-262-2691 • FAX 316-262-3003			
Designed by	JPS	Job No.	01616
Drawn by	SVB	Date	August, 2008

DSNR: JPS OPER: DRP SCALE: 1"=20' 6-18-2004
 I:/2001/01616/PLAN/SR159TH1.DGN 6-18-2004 16:30:37 LAST REV: 5-20-2008 BY: svb