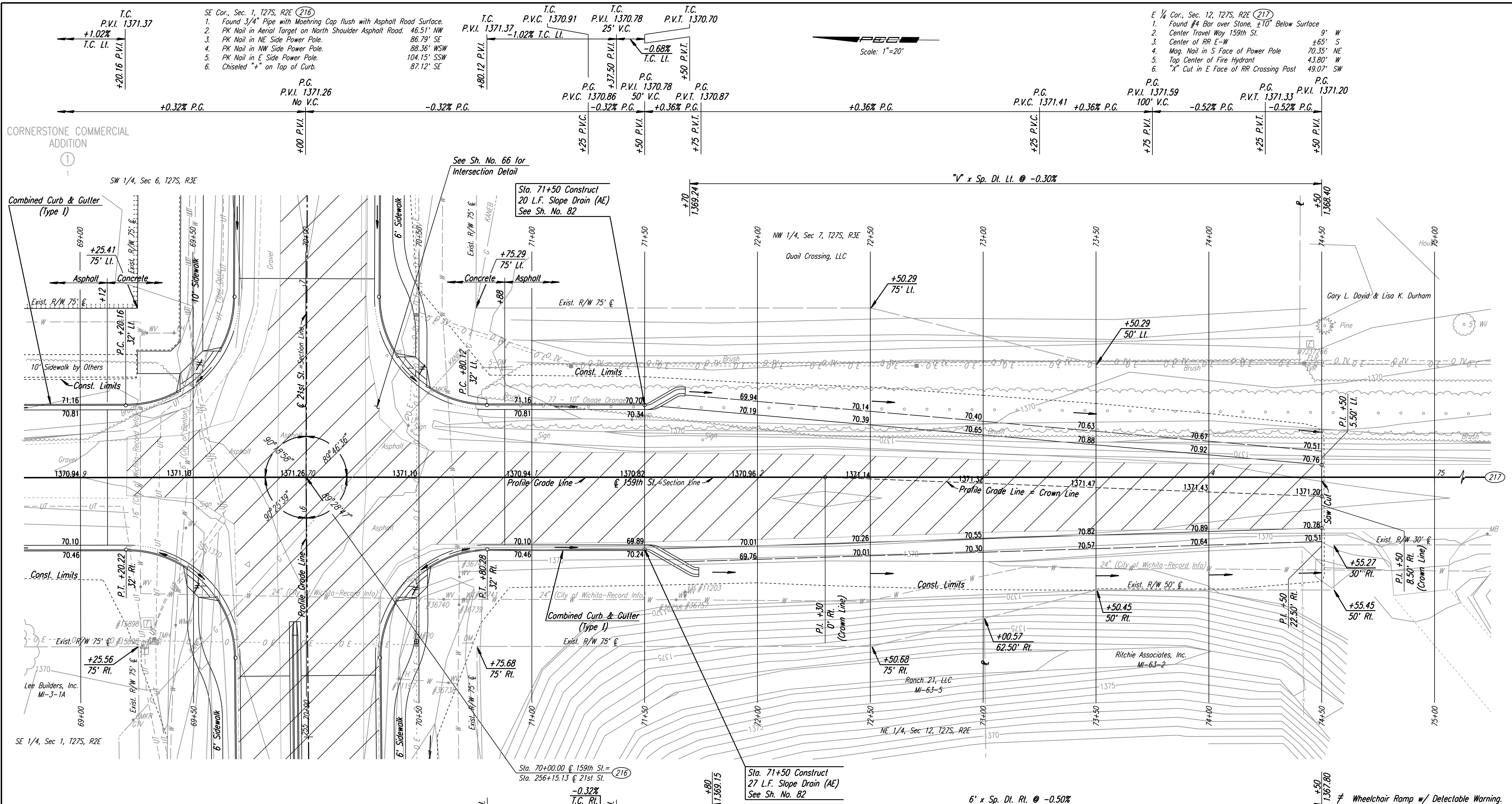


DSNR: JPS OPER: DRP SCALE: 1"=20' LAST REV: 5-20-2008 BY: svb
 I:\2001\01616\PLAN\SR159TH2.DGN 6-18-2004



- SE Cor., Sec. 1, T27S, R2E (216)
1. Found 3/4" Pipe with Moehring Cap flush with Asphalt Road Surface.
 2. PK Nail in Aerial Target on North Shoulder Asphalt Road. 46.51' NW
 3. PK Nail in NE Side Power Pole. 86.79' SE
 4. PK Nail in NW Side Power Pole. 88.36' WSW
 5. PK Nail in E Side Power Pole. 104.15' SSW
 6. Chiseled "+" on Top of Curb. 87.12' SE

- E 1/4 Cor., Sec. 12, T27S, R2E (217)
1. Found #4 Bar over Stone, ±10' Below Surface
 2. Center Travel Way 159th St. 9' W
 3. Center of RR E-W ±65' S
 4. Mag. Nail in S Face of Power Pole 70.35' NE
 5. Top Center of Fire Hydrant 43.80' W
 6. "X" Cut in E Face of RR Crossing Post 49.07' SW

CORNERSTONE COMMERCIAL ADDITION

Combined Curb & Gutter (Type I)

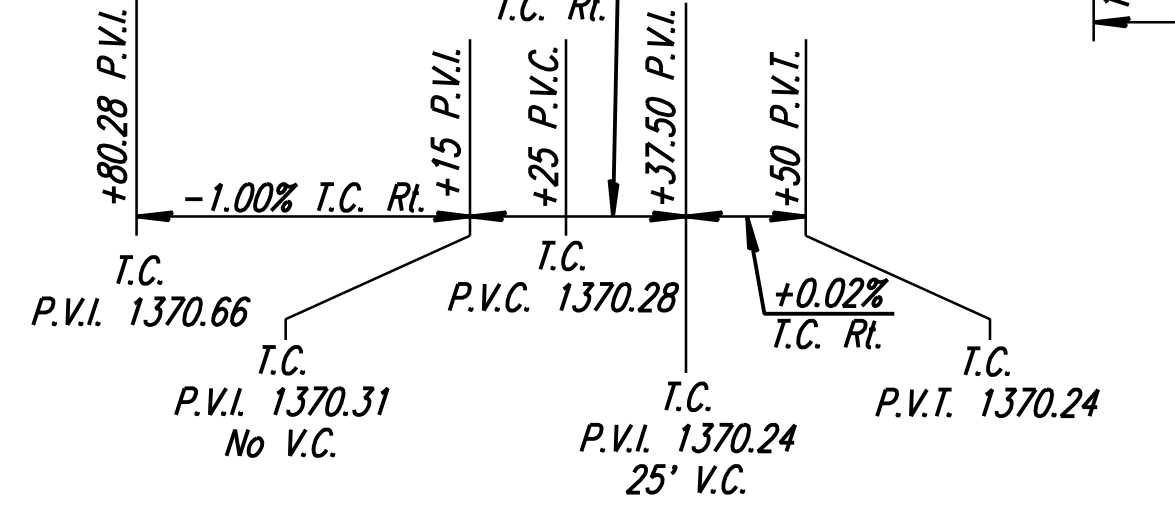
Combined Curb & Gutter (Type I)

SE 1/4, Sec 1, T27S, R2E

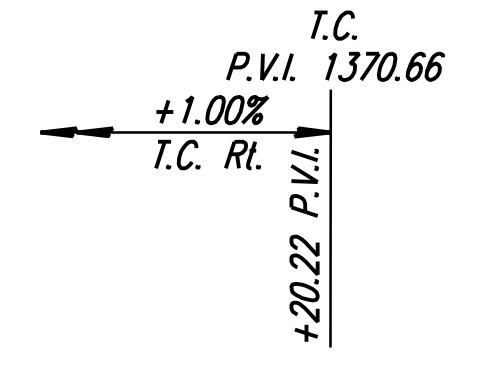
- UTILITIES
- Cable TV
 - Gas
 - Power
 - Telephone
 - Water
 - Water
 - Cox Communications
 - KANEB
 - Westar Energy
 - AT&T
 - Wichita Water & Sewer Dept.
 - City of Benton

REMOVAL OF EXISTING STRUCTURES *		
STATION	SIDE	ITEM
71+02	Lt.	Sign
71+76	Lt.	Sign
74+41	Rt.	10 L.F. Fence

* For Information Only



BM #20 Step nail in E face Power Pole @ SW cor. 21st St. N. & 159th St. E. 72.73' Rt. Sta. 70+48.91 Elev. 1370.31



+0.32% P.G.

-0.32% P.G.

+0.36% P.G.

+0.36% P.G.

-0.52% P.G.

-0.52% P.G.

"V" x Sp. Di. Lt. @ -0.30%

6' x Sp. Di. Rt. @ -0.50%

Wheelchair Ramp w/ Detectable Warning.

No.	Revision	By	Date
159TH ST.			
PLAN			
STA. 69+00 TO STA. 75+00			
JAMES L. ARMOUR, P.E. - CITY ENGINEER CITY OF WICHITA PROJECT NO. 472-84636			
Professional Engineering Consultants, P.A.			
303 S. TOPEKA • WICHITA, KANSAS 67202 316-262-2691 • FAX 316-262-3003			
Designed by	JPS	Job No.	01616
Drawn by	SVB	Date	August, 2008
			Sht. 58 of 282

