
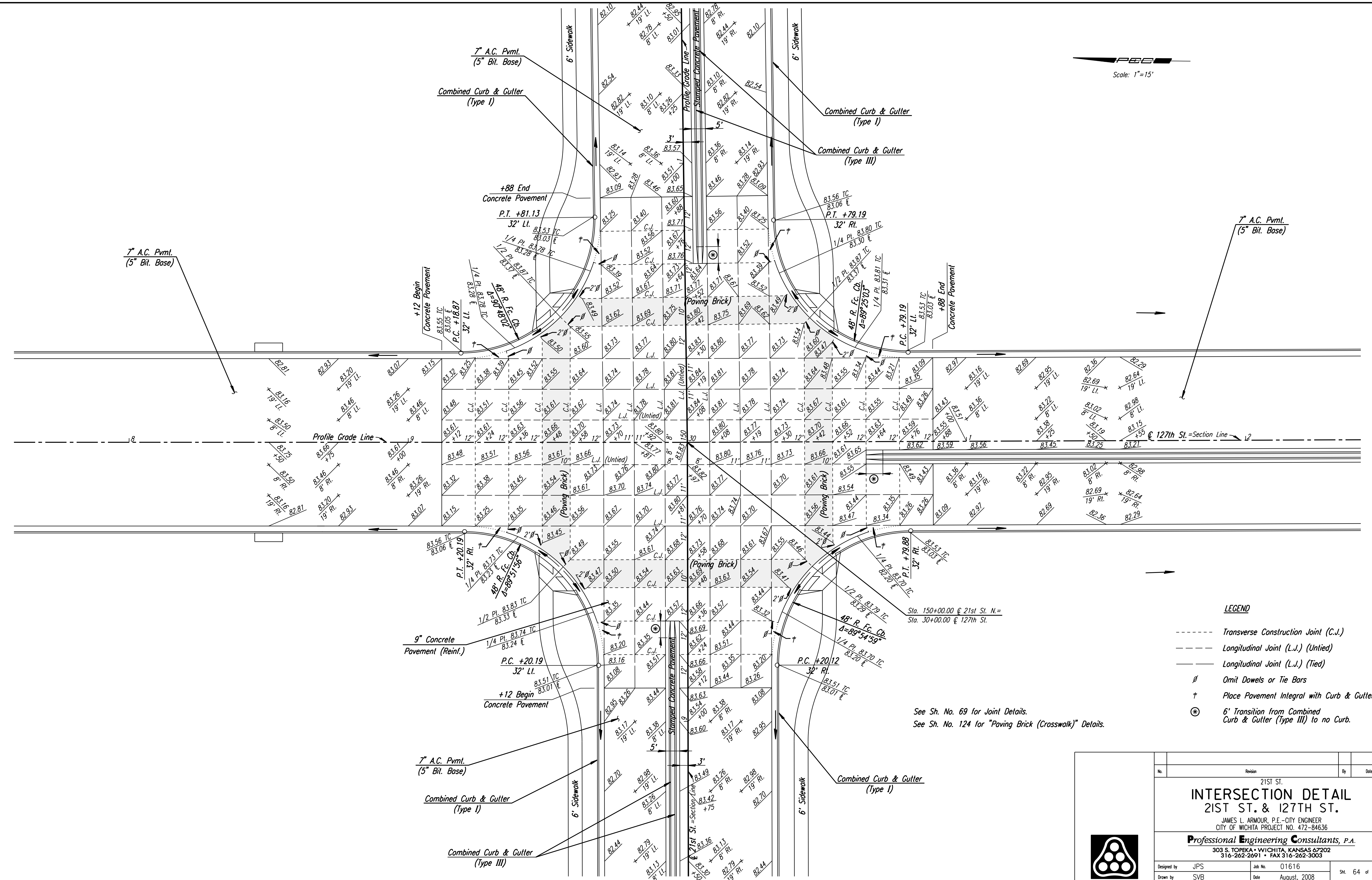


DSNR: JPS OPER: DRP SCALE: 1"=15' FILE: I:\2001\01616\INTERSECTIONS\01616-Intersect 127TH.DGN 5-19-2004 11:24:30 LAST REV: 5-21-2008 BY: svb



 Scale: 1"=15'



- LEGEND**
- Transverse Construction Joint (C.J.)
 - - - - - Longitudinal Joint (L.J.) (Untied)
 - Longitudinal Joint (L.J.) (Tied)
 - Ø Omit Dowels or Tie Bars
 - † Place Pavement Integral with Curb & Gutter
 - ⊗ 6' Transition from Combined Curb & Gutter (Type III) to no Curb.

See Sh. No. 69 for Joint Details.
 See Sh. No. 124 for "Paving Brick (Crosswalk)" Details.

No.	Revision	By	Date
21ST ST. INTERSECTION DETAIL 21ST ST. & 127TH ST. JAMES L. ARMOUR, P.E. - CITY ENGINEER CITY OF WICHITA PROJECT NO. 472-84636 Professional Engineering Consultants, P.A. 303 S. TOPEKA • WICHITA, KANSAS 67202 316-262-2691 • FAX 316-262-3003			
Designed by	JPS	Job No.	01616
Drawn by	SVB	Date	August, 2008
			Sht. 64 of 282

