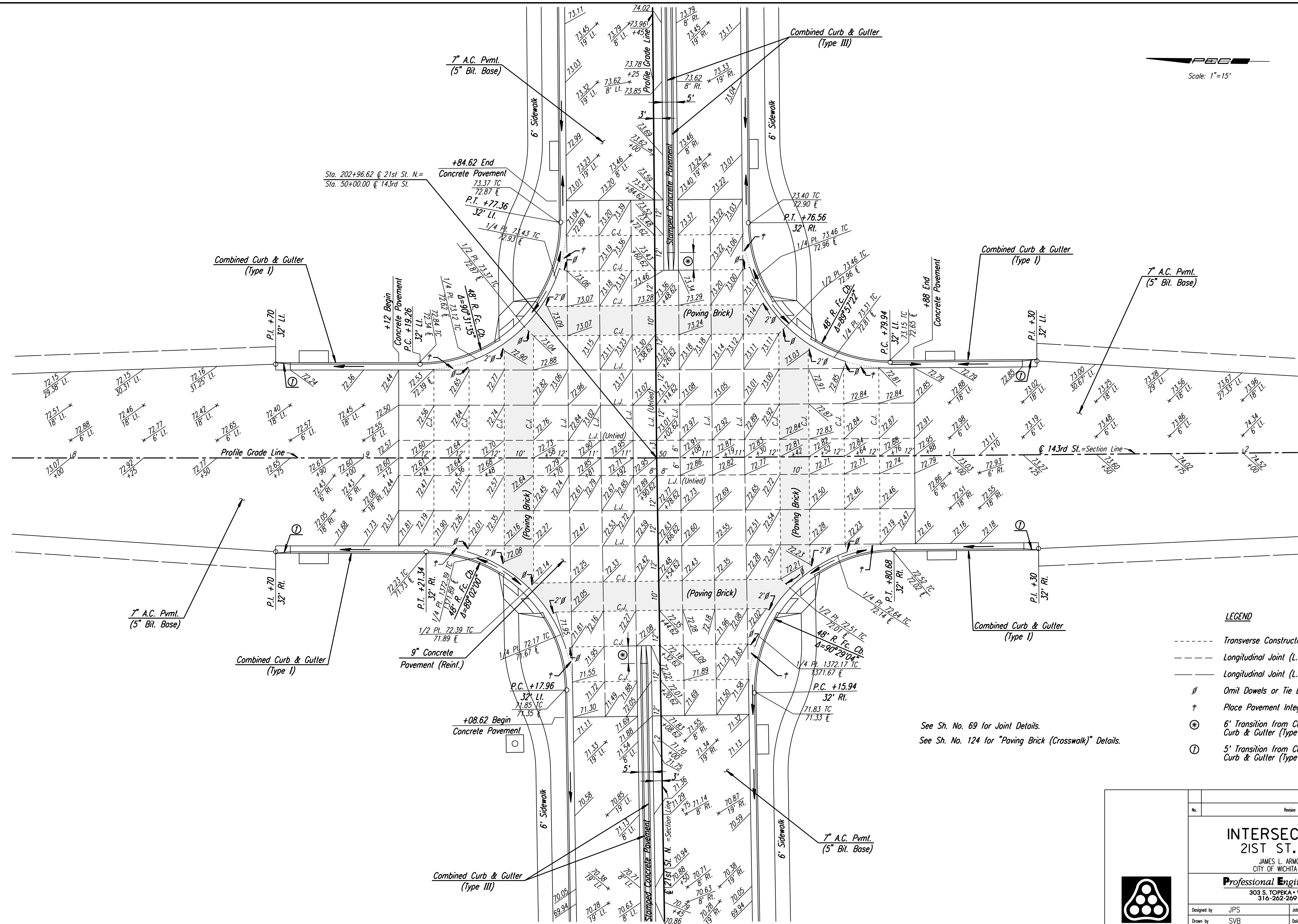


DSNR: JPS OPER: DRP SCALE: 1"=15'  
 I:\2001\01616\INTERSECTIONS\01616-Intersect 143RD.DGN 5-19-2004 11:24:30 LAST REV: 5-21-2008 BY: svb



- LEGEND**
- Transverse Construction Joint (C.J.)
  - Longitudinal Joint (L.J.) (Untied)
  - Longitudinal Joint (L.J.) (Tied)
  - Ø Omit Dowels or Tie Bars
  - † Place Pavement Integral with Curb & Gutter
  - ⊕ 6' Transition from Combined Curb & Gutter (Type III) to no curb.
  - Ⓛ 5' Transition from Combined Curb & Gutter (Type I) to no curb.

See Sh. No. 69 for Joint Details.  
 See Sh. No. 124 for "Paving Brick (Crosswalk)" Details.

No.	Revision	By	Date
21ST ST.			
<b>INTERSECTION DETAIL</b>			
<b>21ST ST. &amp; 143RD ST.</b>			
JAMES L. ARMOUR, P.E. - CITY ENGINEER CITY OF WICHITA PROJECT NO. 472-84636			
<b>Professional Engineering Consultants, P.A.</b> 303 S. TOPEKA • WICHITA, KANSAS 67202 316-262-2691 • FAX 316-262-3003			
Designed by	JPS	Job No.	01616
Drawn by	SVB	Date	August, 2008
			Sht. 65 of 282

