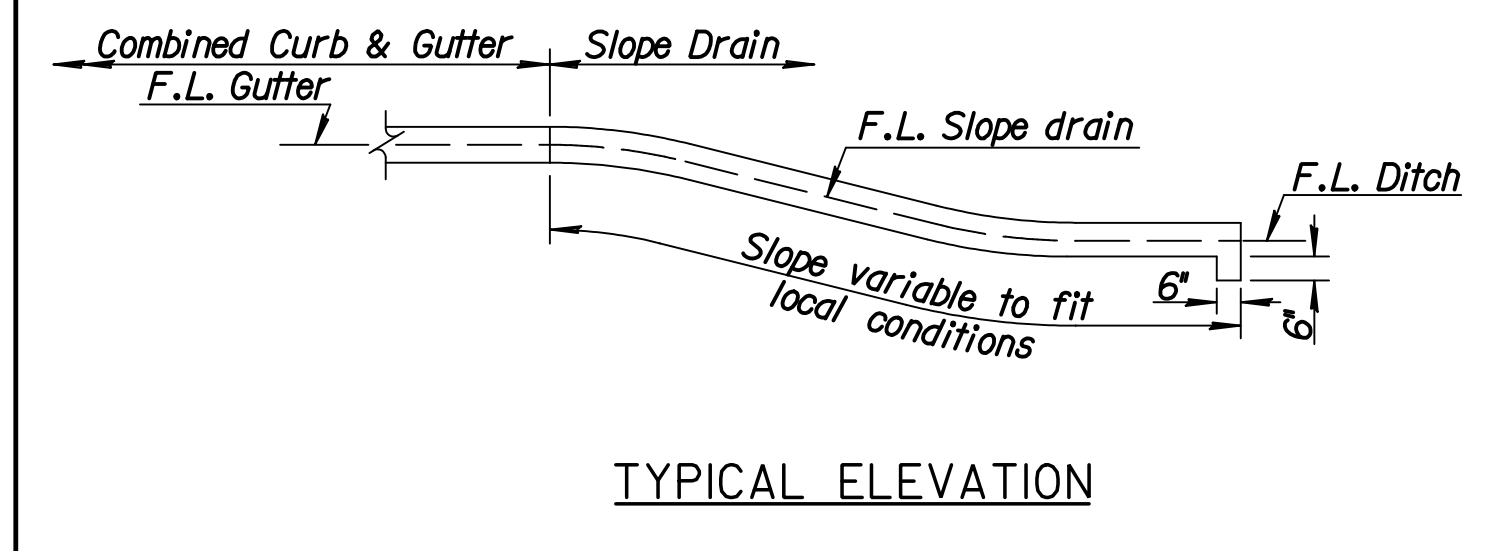
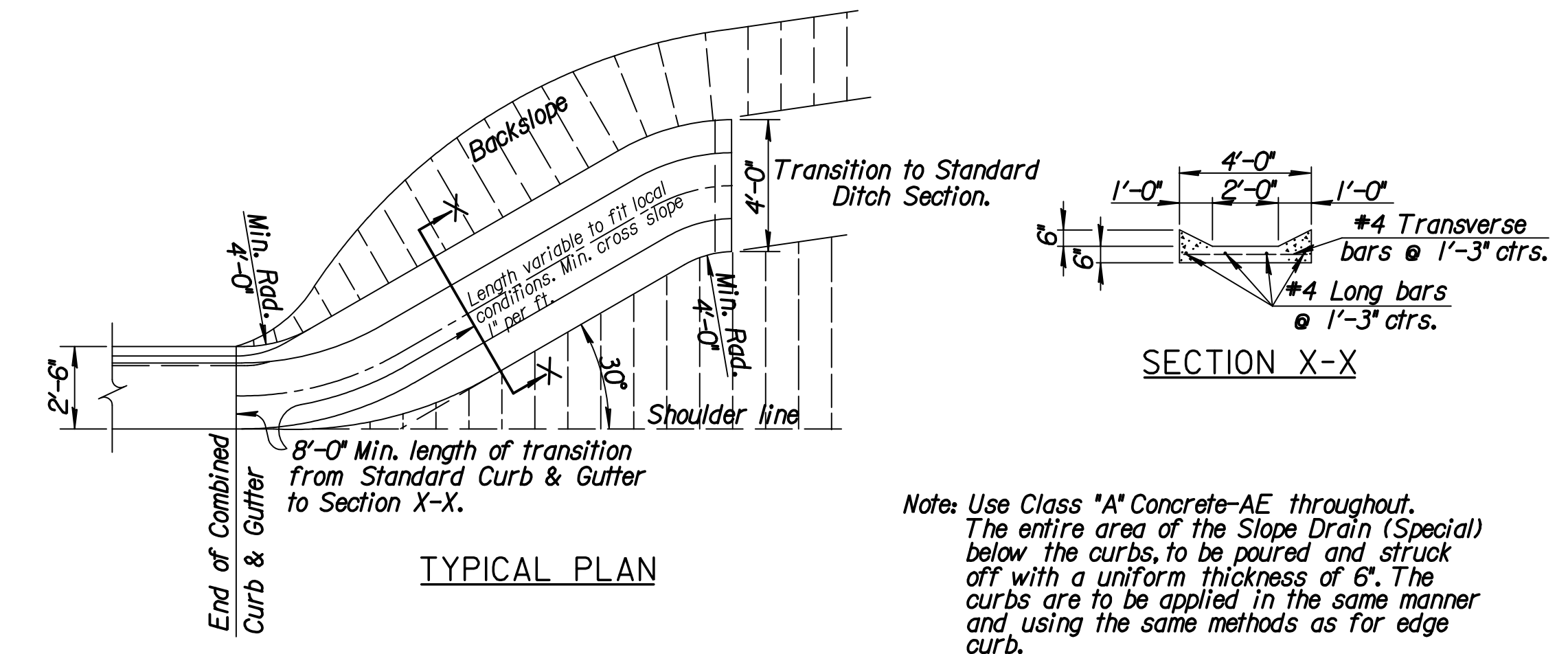


UNDERDRAIN DETAILS AT CURB INLET LOCATIONS

GENERAL NOTES

- Underdrain pipe shall be perforated Polyvinyl Chloride Pipe conforming to the requirements of ASTM F-758.
- Pipe shall be placed so that the perforations are positioned on the bottom of the pipe.
- Underdrain aggregate shall be type BD-1 per KDOT Standard Specifications Section 1108.
- Provide sufficient length of filter fabric to completely enclose the underdrain aggregate on all sides.
- Fabric filter cloth shall extend at least to the back of curb to cover the Reinforced Crushed Rock Base. The cloth may extend under the curb and gutter.
- Underdrain shall be measured and paid for at the contract unit price bid per lineal foot for "Underdrains" and shall be full compensation for all materials, labor, equipment and incidentals necessary to complete the work as shown on this sheet.

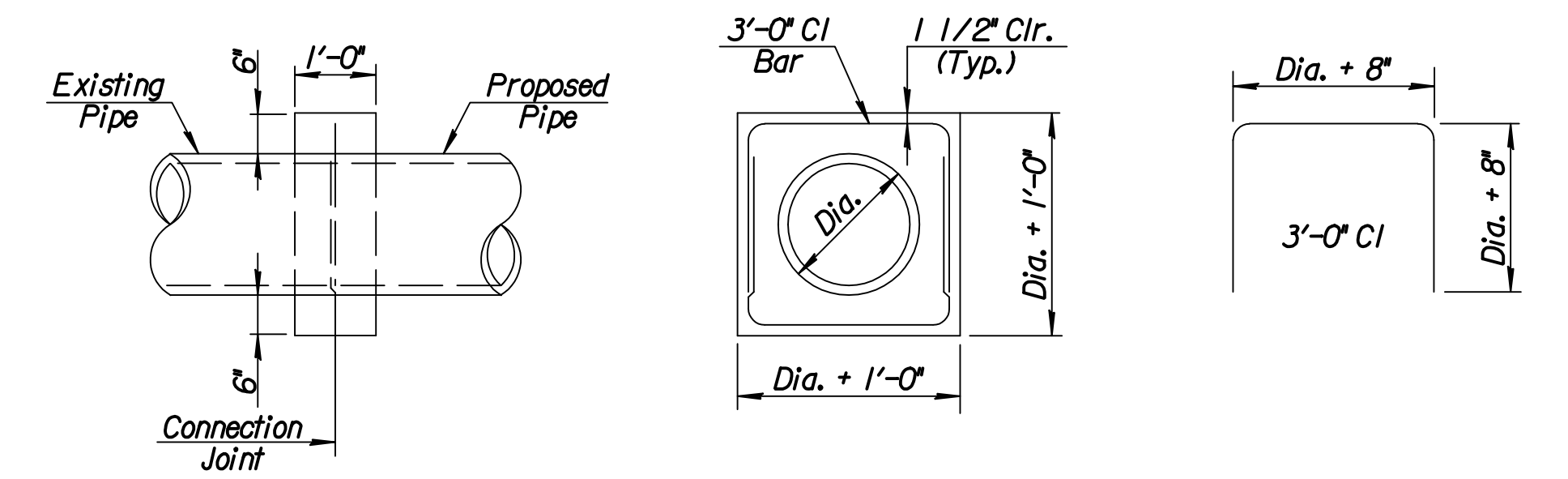
Underdrains shall be located on the upstream side of curb inlets on grade and on both sides of curb inlets in sump conditions.



Note: Use Class "A" Concrete-AE throughout. The entire area of the Slope Drain (Special) below the curbs, to be poured and struck off with a uniform thickness of 6". The curbs are to be applied in the same manner and using the same methods as for edge curb. Reinforcing steel to be deformed #4 bars.

Adopted from KDOT STD. NO. RD722

SLOPE DRAIN



Concrete collars shall be provided at connection to existing conduits where, in the opinion of the Engineer, a collar is required for a satisfactory connection. Class A Concrete or the mix used in concrete pavement shall be used throughout. Concrete collars will not be paid for directly, but shall be considered Subsidiary to the various pipes involved.

CONCRETE COLLAR DETAILS

DSNR: JPS OPER: svb SCALE: 1/2001/01616/STANDARDS/01616-MISC DRAINAGE v8.DGN 12-16-2007 9:15:14 LAST REV: 5-21-2008 BY: svb

No.	Revision	By	Date
21ST ST. MISCELLANEOUS DRAINAGE DETAILS JAMES L. ARMOUR, P.E.-CITY ENGINEER CITY OF WICHITA PROJECT NO. 472-84636 Professional Engineering Consultants, P.A. 303 S. TOPEKA • WICHITA, KANSAS 67202 316-262-2691 • FAX 316-262-3003			
Designed by	JPS	Job No.	01616
Drawn by	DRP	Date	August, 2008
			Sht. 82 of 282