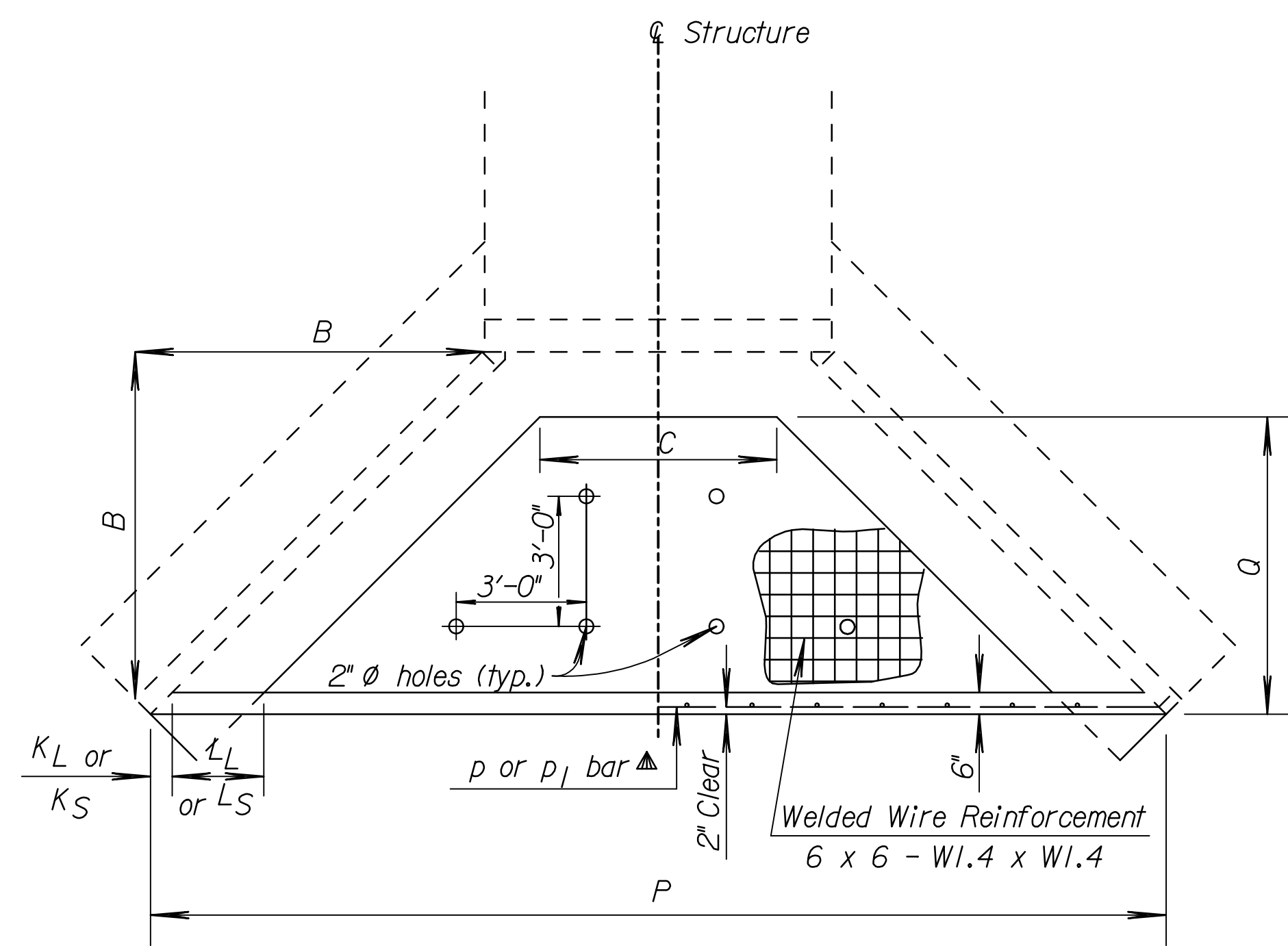
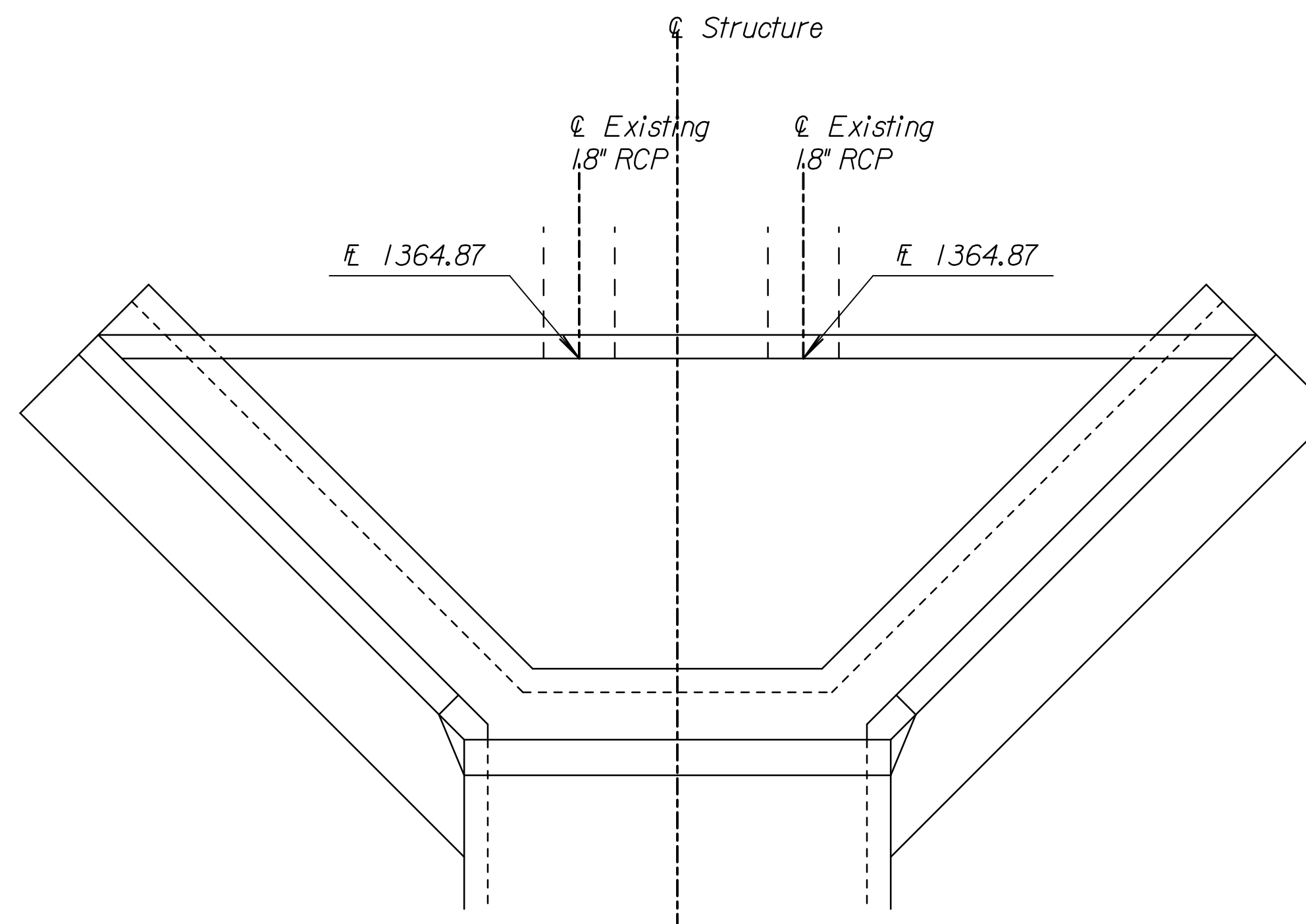


STATE	PROJECT NO.	YEAR	SHEET NO.	TOTAL SHEETS
KANSAS	472-84636	2008	90	282

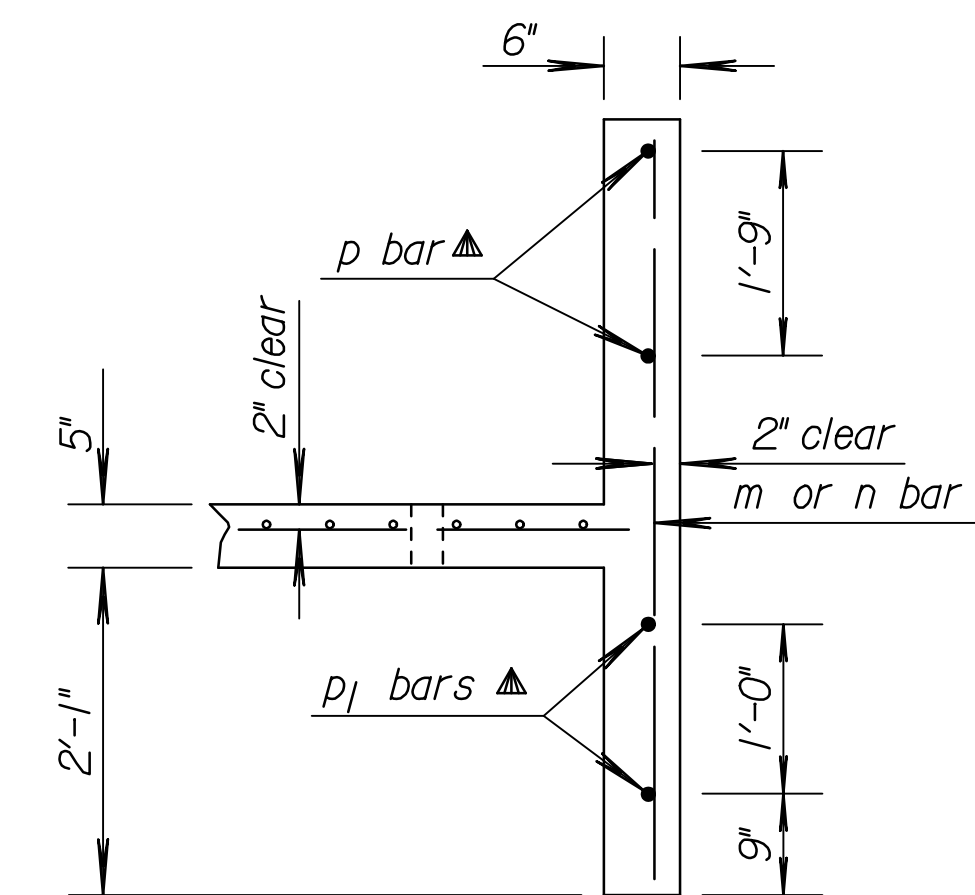
**GENERAL NOTE**  
**CONCRETE:** Concrete Grade 4.0 shall be used throughout. All exposed edges shall be finished with an edging tool.  
**REINFORCING:** All dimensions are to  $\phi$  of bar except where noted. All reinforcing bars are No. 4. Reinforcing bars shall be Grade 60 billet steel. Minimum clearance on all reinforcement shall be 2".  
Welded wire reinforcement shall be paid as pounds of reinforcing steel. When holes in the apron are warranted by drainage conditions they shall be constructed as directed by the Engineer.



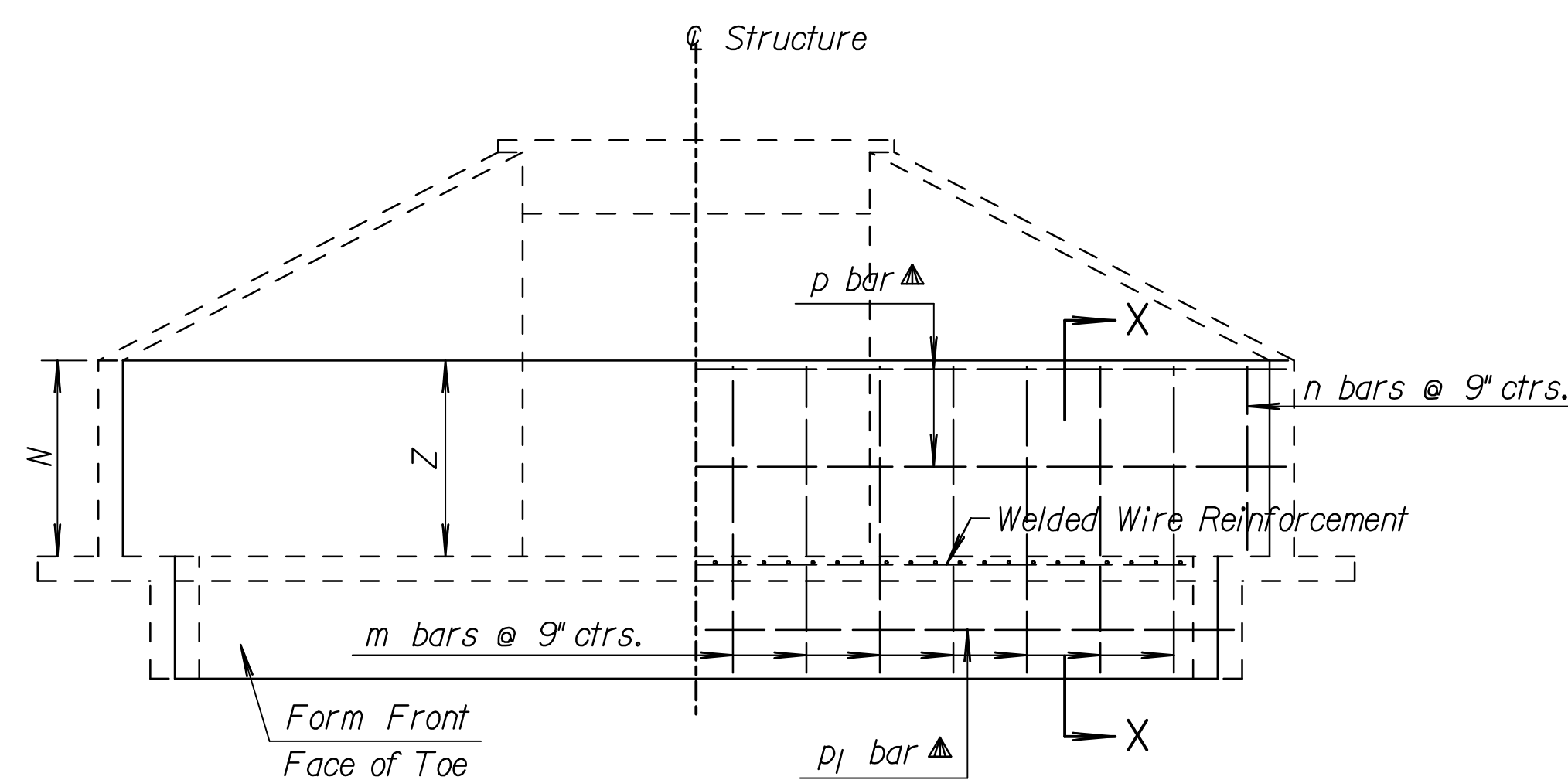
PLAN



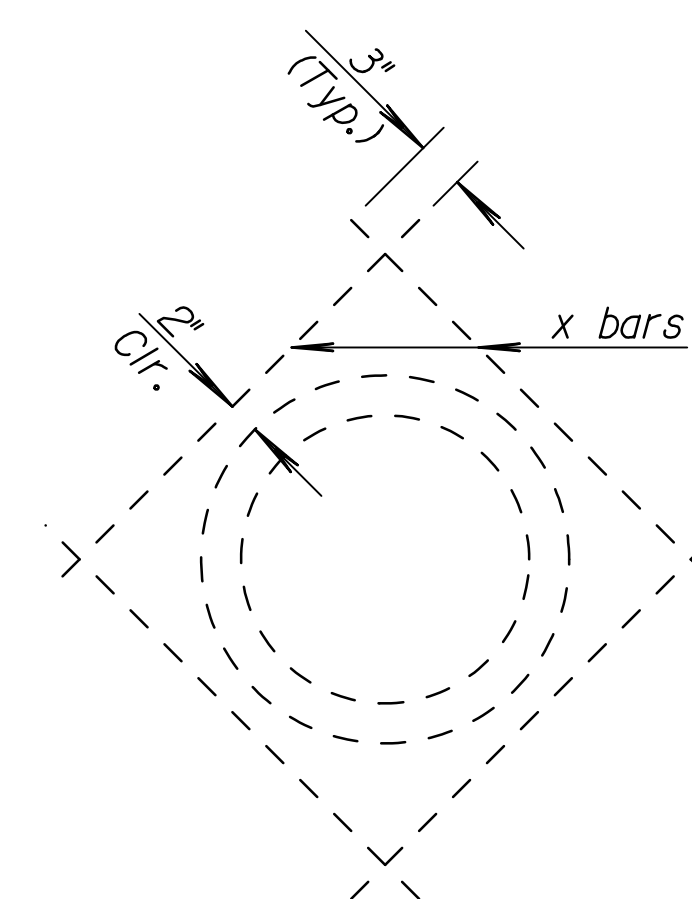
PLAN



SECTION X-X



ELEVATION AND SECTION



TYPICAL PIPE OPENINGS  
field cut m and p bars to clear 18" RCP's



$\phi$  Angle varies according to skew of RCB. Bars shall be field bent.

BENDING DIAGRAMS

▲ Drill and grout p and q bars into wingwalls and pi bar into wing footings when the soil saver end wall is constructed separately from the wingwalls. Drilling and grouting shall be Subsidiary to the bid item "Reinforcing Steel".

**SUMMARY OF SOIL SAVERS**

RCB No.	Culvert Size	Side	Z	Skew
1	8'x5'	Left	4.00'	0°

STATION 139+62.00															
Letter	B	C	KL	KS	Lt.	LL	LS	M	N	Skew	P	PL	Z=	PS	Q
Dimension	8'-1 1/2"	6'-1 1/4"	6"	6"	2'-1 1/2"	2'-1 1/2"	4'-0"	24'-5 1/4"	-	0°	-	-	-	7'-0 1/2"	-
Bar	m	n	p	pi	x			Welded Wire Reinforcement						87.7	Sq. Ft.
Number	26	6	2	2	8			Grade 4.0 Conc.						3.96	Cu. Yd.
Length	6'-1"	3'-8"	24'-11"	20'-8"	2'-9"			Reinf. steel						214	Lbs.

STATION															
Letter	B	C	KL	KS	Lt.	LL	LS	M	N	Skew	P	PL	Z=	PS	Q
Dimension															
Bar	m	n*	p	pi	q			Welded Wire Reinforcement							Sq. Ft.
Number								Grade 4.0 Conc.							Cu. Yd.
Length								Reinf. steel							Lbs.

STATION															
Letter	B	C	KL	KS	Lt.	LL	LS	M	N	Skew	P	PL	Z=	PS	Q
Dimension															
Bar	m	n*	p	pi	q			Welded Wire Reinforcement							Sq. Ft.
Number								Grade 4.0 Conc.							Cu. Yd.
Length								Reinf. steel							Lbs.

STATION															
Letter	B	C	KL	KS	Lt.	LL	LS	M	N	Skew	P	PL	Z=	PS	Q
Dimension															
Bar	m	n*	p	pi	q			Welded Wire Reinforcement							Sq. Ft.
Number								Grade 4.0 Conc.							Cu. Yd.
Length								Reinf. steel							Lbs.

STATION															
Letter	B	C	KL	KS	Lt.	LL	LS	M	N	Skew	P	PL	Z=	PS	Q
Dimension															
Bar	m	n*	p	pi	q			Welded Wire Reinforcement							Sq. Ft.
Number								Grade 4.0 Conc.							Cu. Yd.
Length								Reinf. steel							Lbs.

STATION															
Letter	B	C	KL	KS	Lt.	LL	LS	M	N	Skew	P	PL	Z=	PS	Q
Dimension															
Bar	m	n*	p	pi	q			Welded Wire Reinforcement							Sq. Ft.
Number								Grade 4.0 Conc.							Cu. Yd.
Length								Reinf. steel							Lbs.

KANSAS DEPARTMENT OF TRANSPORTATION				
<b>SOIL SAVER FOR R.C. CULVERTS RCB STA 139+62.00</b>				
RD520				
DESIGNED	6-10-05	APP'D.	James O. Brewer	
DETAIL	TRACED	QUANTITIES	Bowser	
DESIGN CK.	DETAIL CK.	QUAN. CK.	TRACE CK. Seltz	

Quantities include apron and soil saver end wall.

\* n bars are variable, increase by increments of 7". Cut 2 each length.

Drawn By: KDOT  
Plotted: 5-21-2008 svb  
File: I:\2001\016\RCB\01616-Soil\_Saver\_Station139+62.dgn