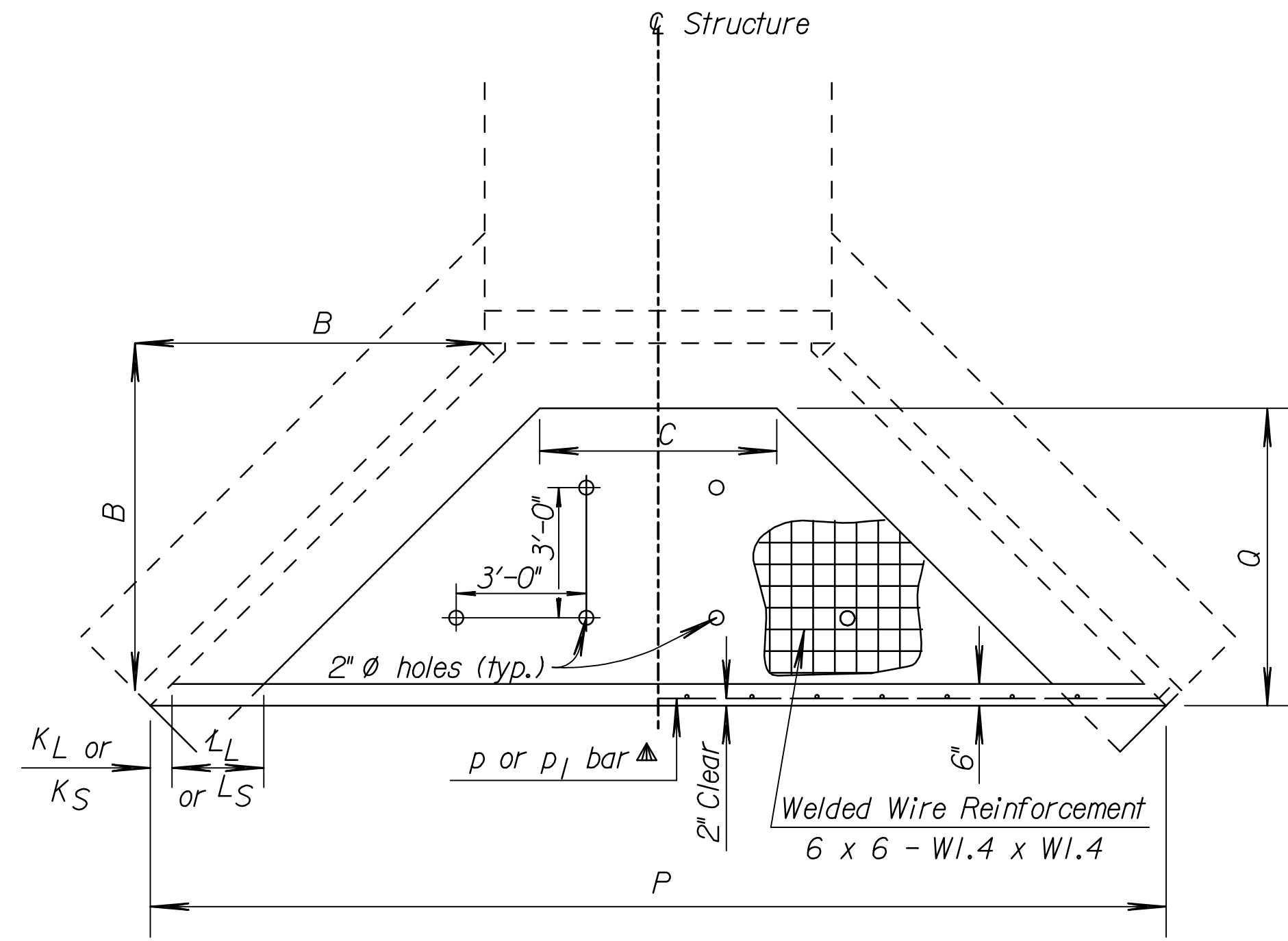


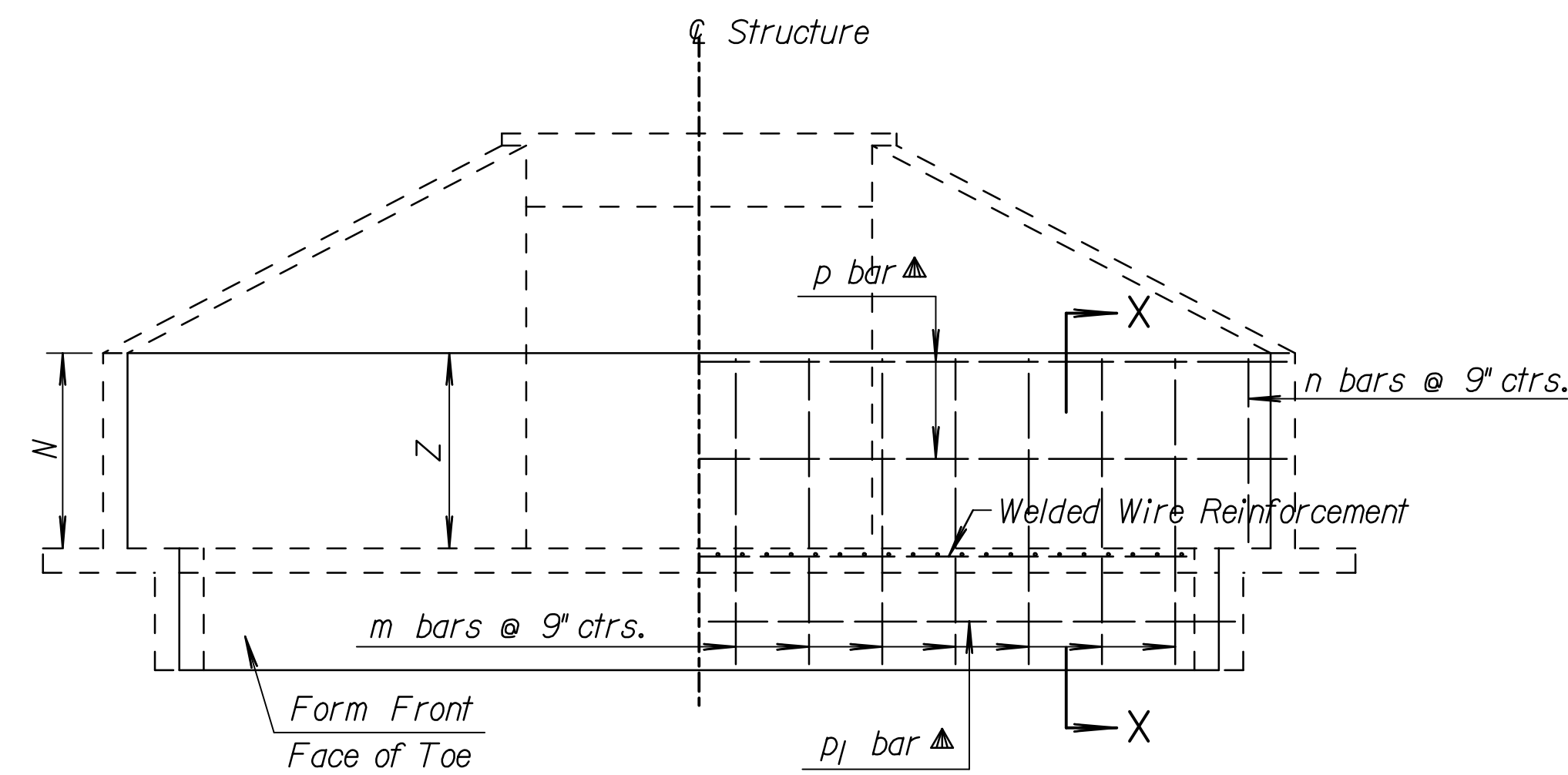
STATE	PROJECT NO.	YEAR	SHEET NO.	TOTAL SHEETS
KANSAS	472-84636	2008	101	282

GENERAL NOTE

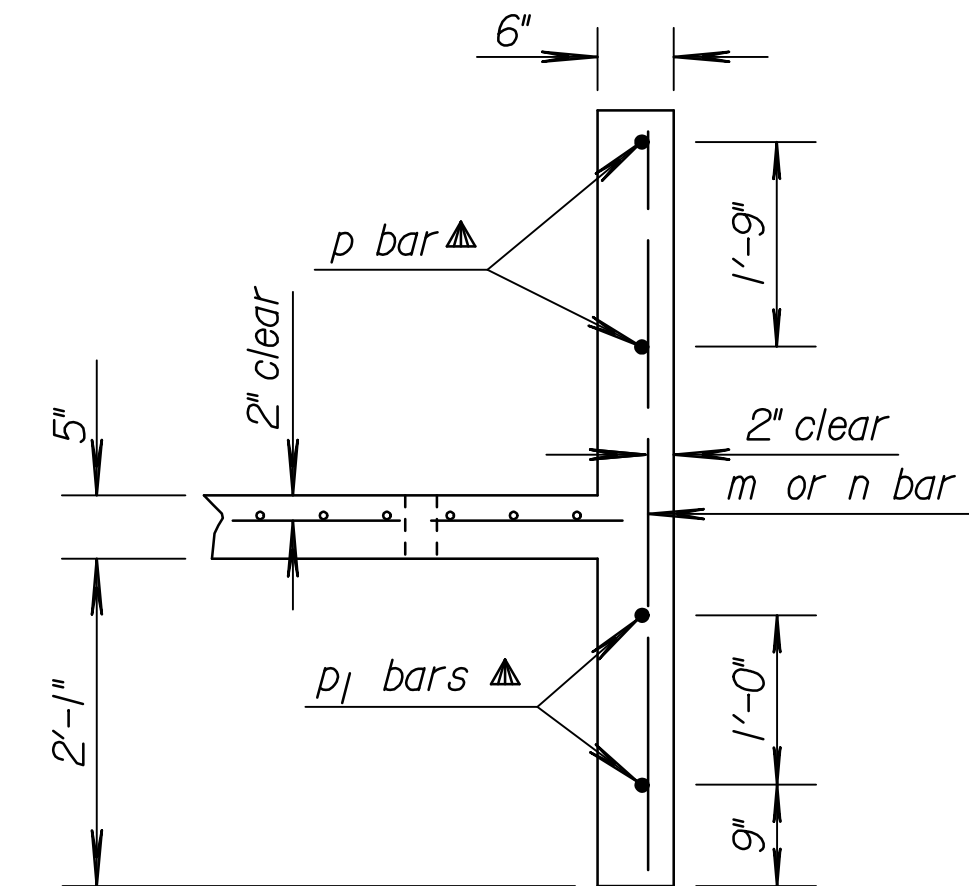
CONCRETE: Concrete Grade 4.0 shall be used throughout. All exposed edges shall be finished with an edging tool.
 REINFORCING: All dimensions are to ϕ of bar except where noted. All reinforcing bars are No. 4. Reinforcing bars shall be Grade 60 billet steel. Minimum clearance on all reinforcement shall be 2".
 Welded wire reinforcement shall be paid as pounds of reinforcing steel. When holes in the apron are warranted by drainage conditions they shall be constructed as directed by the Engineer.



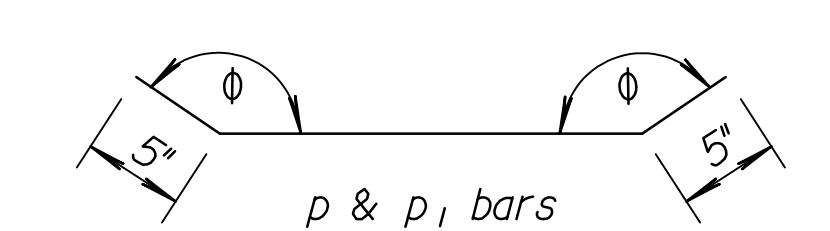
PLAN



ELEVATION AND SECTION



SECTION X-X



ϕ Angle varies according to skew of RCB. Bars shall be field bent.

BENDING DIAGRAMS

▲ Drill and grout p and q bars into wingwalls and p1 bar into wing footings when the soil saver end wall is constructed separately from the wingwalls. Drilling and grouting shall be Subsidiary to the bid item "Reinforcing Steel".

SUMMARY OF SOIL SAVERS

RCB No.	Culvert Size	Side	Z	Skew
1	3'-8"x5'	Left	4.00'	0°

STATION 192+92.00		SIDE: Lt.				Skew 0°				Z= 4.00'		
Letter	B	C	KL	KS	LL	LS	M	N	P	PL	PS	Q
Dimension	8'-1 3/8"	24'-3 1/4"	6"	6"	2'-1 1/2"	2'-1 1/2"	-	4'-0"	42'-7 1/4"	-	-	7'-0 1/2"
Bar	m	n	p	p1	q	Welded Wire Reinforcement						Sq. Ft.
Number	49	6	2	2	Grade 4.0 Conc.						7.98 Cu.Yd.	
Length	6'-1"	3'-8"	43'-1"	38'-10"	Reinf. steel						370 Lbs.	

STATION		SIDE				Skew				Z=		
Letter	B	C	KL	KS	LL	LS	M	N	P	PL	PS	Q
Dimension	B	C	KL	KS	LL	LS	M	N	P	PL	PS	Q
Bar	m	n*	p	p1	q	Welded Wire Reinforcement						Sq. Ft.
Number						Grade 4.0 Conc.						Cu.Yd.
Length						Reinf. steel						Lbs.

STATION		SIDE				Skew				Z=		
Letter	B	C	KL	KS	LL	LS	M	N	P	PL	PS	Q
Dimension	B	C	KL	KS	LL	LS	M	N	P	PL	PS	Q
Bar	m	n*	p	p1	q	Welded Wire Reinforcement						Sq. Ft.
Number						Grade 4.0 Conc.						Cu.Yd.
Length						Reinf. steel						Lbs.

STATION		SIDE				Skew				Z=		
Letter	B	C	KL	KS	LL	LS	M	N	P	PL	PS	Q
Dimension	B	C	KL	KS	LL	LS	M	N	P	PL	PS	Q
Bar	m	n*	p	p1	q	Welded Wire Reinforcement						Sq. Ft.
Number						Grade 4.0 Conc.						Cu.Yd.
Length						Reinf. steel						Lbs.

STATION		SIDE				Skew				Z=		
Letter	B	C	KL	KS	LL	LS	M	N	P	PL	PS	Q
Dimension	B	C	KL	KS	LL	LS	M	N	P	PL	PS	Q
Bar	m	n*	p	p1	q	Welded Wire Reinforcement						Sq. Ft.
Number						Grade 4.0 Conc.						Cu.Yd.
Length						Reinf. steel						Lbs.

STATION		SIDE				Skew				Z=		
Letter	B	C	KL	KS	LL	LS	M	N	P	PL	PS	Q
Dimension	B	C	KL	KS	LL	LS	M	N	P	PL	PS	Q
Bar	m	n*	p	p1	q	Welded Wire Reinforcement						Sq. Ft.
Number						Grade 4.0 Conc.						Cu.Yd.
Length						Reinf. steel						Lbs.

Quantities include apron and soil saver end wall.

* n bars are variable, increase by increments of 7". Cut 2 each length.

Drawn By: KDOT
 Plotted: 5-21-2008 svb
 File: I:\2001\01616\RCB\01616-Soil_Saver_Station192+92.dgn

NO.	DATE	REVISIONS	BY	APP'D
2	04-28-05	Chg. Class to Grade concrete, WWR	S.W.K.	J.O.B.
1	08-01-00	Revised Drill & Grout Note	R.J.S.	J.O.B.

KANSAS DEPARTMENT OF TRANSPORTATION

SOIL SAVER FOR R.C. CULVERTS

RCB STA 192+92.00

RD520

FHWA APPROVAL	6-10-05	APP'D. James O. Brewer
DESIGNED	QUANTITIES	TRACED Bowser
DESIGN CK.	DETAIL CK.	QUAN. CK. TRACE CK. Seltz