

| DETECTOR SUMMARY | | | | | | | |
|------------------|----------------|----------|------------|--------------|----------------|---------------------|------------------------|
| CAMERA NO. | DETECTION ZONE | MODE | SIZE (LxW) | PHASE CALLED | PHASE EXTENDED | DELAY/STRETCH TIMER | INITIAL SETTING (SEC.) |
| 1 | D4-1 | Presence | 60x6 | 4 | 4 | - | - |
| 1 | D4-2 | Presence | 60x6 | 4 | 4 | D | 5 |
| 2 | D2-1 | Pulse | 6x6 | 2 | 2 | S | 1 |
| 2 | D2-2 | Pulse | 6x6 | 2 | 2 | S | 1 |
| 2 | D2-3 | Presence | 60x6 | 2 | 2 | - | - |
| 2 | D2-4 | Pulse | 6x6 | 2 | 2 | S | 1 |
| 2 | D2-5 | Pulse | 6x6 | 2 | 2 | S | 1 |
| 2 | D2-6 | Presence | 60x6 | 2 | 2 | - | - |
| 2 | D5-1 | Presence | 60x6 | 5 | 5 | - | - |
| 3 | D8-1 | Presence | 60x6 | 8 | 8 | - | - |
| 3 | D8-2 | Presence | 60x6 | 8 | 8 | D | 5 |
| 4 | D1-1 | Presence | 60x6 | 1 | 1 | - | - |
| 4 | D6-1 | Pulse | 6x6 | 6 | 6 | S | 1 |
| 4 | D6-2 | Pulse | 6x6 | 6 | 6 | S | 1 |
| 4 | D6-3 | Presence | 60x6 | 6 | 6 | - | - |
| 4 | D6-4 | Pulse | 6x6 | 6 | 6 | S | 1 |
| 4 | D6-5 | Pulse | 6x6 | 6 | 6 | S | 1 |
| 4 | D6-6 | Presence | 60x6 | 6 | 6 | - | - |

GENERAL NOTES

All Signal Heads shall have 12" LED lenses.

All Pedestrian Signal Heads shall have 16" LED lenses.

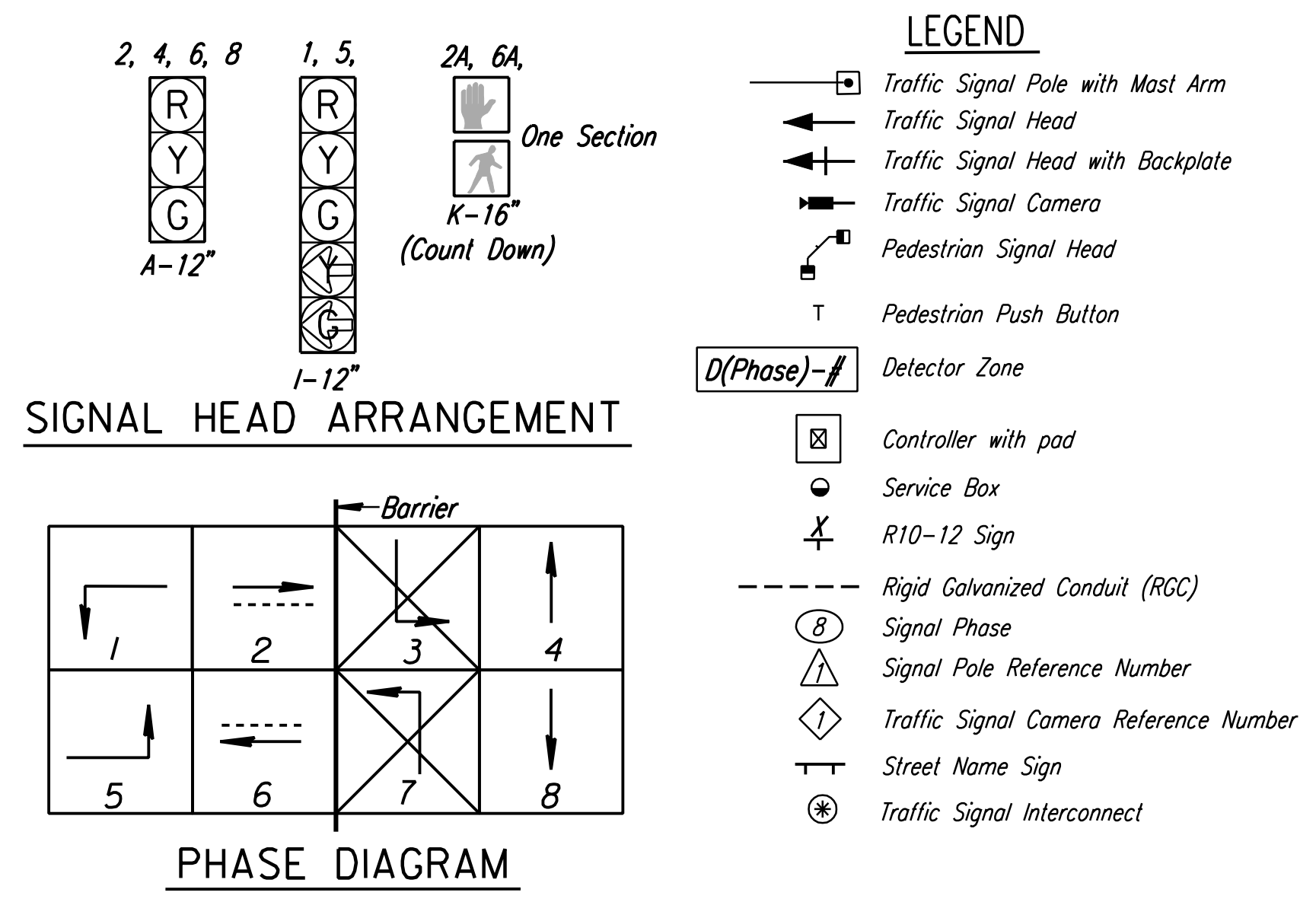
Placement of Signal Poles, Service/Junction Boxes, Conduit runs and Controller are typical and may be adjusted as directed by the Engineer to facilitate installation.

Utility locations are approximate. The Contractor shall be responsible for locating all underground utilities prior to construction.

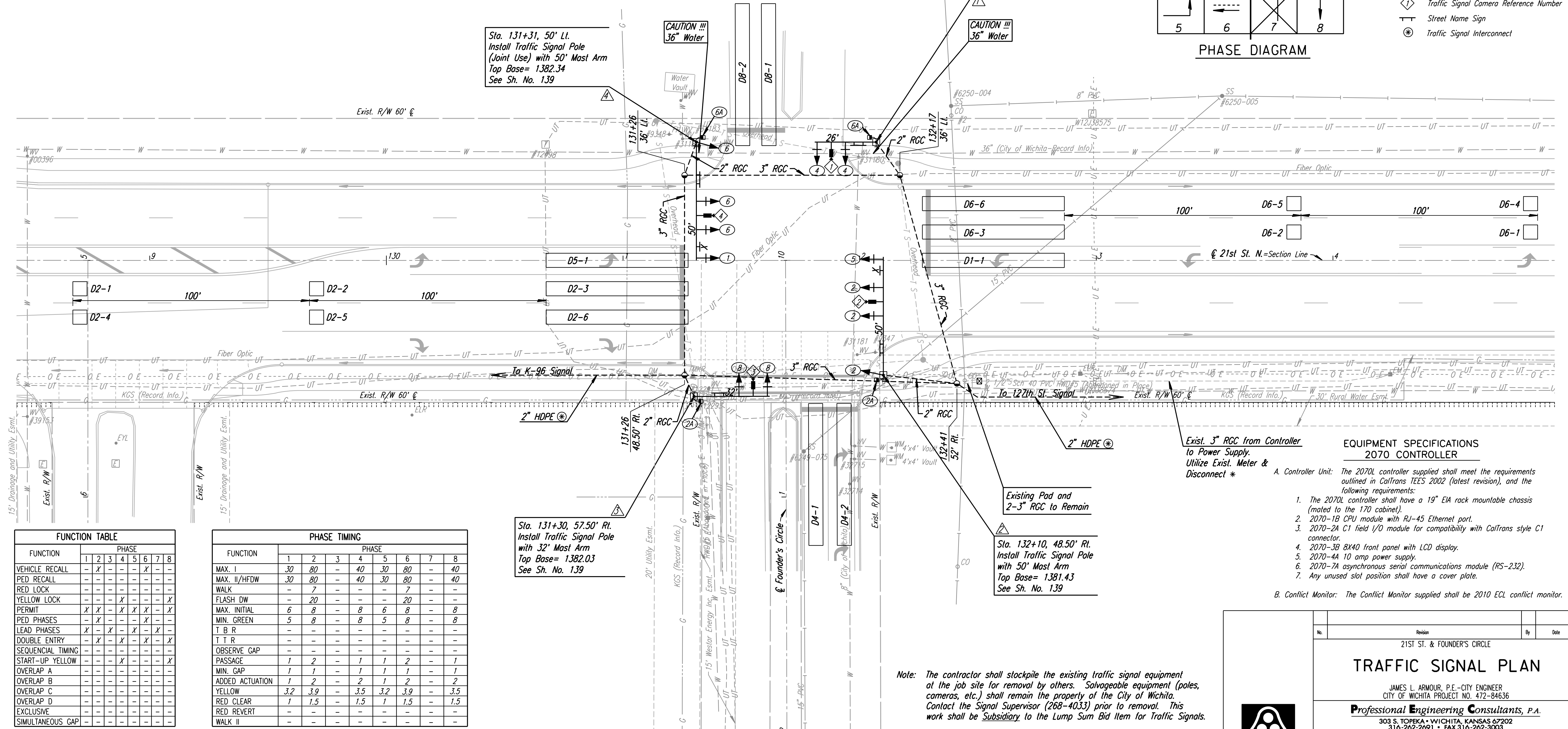
Contractor is to coordinate Signal Installation so the intersection of Founder's Circle and 21st St. has a working Signal at all times. Work necessary to maintain a temporary signal during construction shall be included in Lump Sum Price for "Temporary Traffic Signal Installation".

* The Contractor shall coordinate with Westar Energy for the exact location of the meter and disconnect box and for the connection of power for the traffic signal installation.

Joint Use luminaires are shown for information only. Luminaire, luminaire arm, and wiring to be provided and installed by Westar Energy. Joint Use lights to be served by overhead power lines.



- LEGEND**
- Traffic Signal Pole with Mast Arm
 - Traffic Signal Head
 - Traffic Signal Head with Backplate
 - Traffic Signal Camera
 - Pedestrian Signal Head
 - Pedestrian Push Button
 - D(Phase)-# Detector Zone
 - Controller with pad
 - Service Box
 - R10-12 Sign
 - Rigid Galvanized Conduit (RGC)
 - Signal Phase
 - Signal Pole Reference Number
 - Traffic Signal Camera Reference Number
 - Street Name Sign
 - Traffic Signal Interconnect



| FUNCTION | PHASE | | | | | | | |
|-------------------|-------|---|---|---|---|---|---|---|
| | 1 | 2 | 3 | 4 | 5 | 6 | 7 | 8 |
| VEHICLE RECALL | - | X | - | - | - | X | - | - |
| PED RECALL | - | - | - | - | - | - | - | - |
| RED LOCK | - | - | - | - | - | - | - | - |
| YELLOW LOCK | - | - | - | X | - | - | - | X |
| PERMIT | X | X | X | X | X | X | X | X |
| PED PHASES | X | X | - | - | X | - | - | - |
| LEAD PHASES | X | X | X | X | X | X | X | X |
| DOUBLE ENTRY | - | X | - | X | - | X | - | X |
| SEQUENTIAL TIMING | - | - | - | - | - | - | - | - |
| START-UP YELLOW | - | - | X | - | - | - | - | X |
| OVERLAP A | - | - | - | - | - | - | - | - |
| OVERLAP B | - | - | - | - | - | - | - | - |
| OVERLAP C | - | - | - | - | - | - | - | - |
| OVERLAP D | - | - | - | - | - | - | - | - |
| EXCLUSIVE | - | - | - | - | - | - | - | - |
| SIMULTANEOUS GAP | - | - | - | - | - | - | - | - |

| FUNCTION | PHASE | | | | | | | |
|-----------------|-------|-----|---|-----|-----|-----|---|-----|
| | 1 | 2 | 3 | 4 | 5 | 6 | 7 | 8 |
| MAX. I | 30 | 80 | - | 40 | 30 | 80 | - | 40 |
| MAX. II/HFDW | 30 | 80 | - | 40 | 30 | 80 | - | 40 |
| WALK | - | 7 | - | - | - | 7 | - | - |
| FLASH DW | - | 20 | - | - | - | 20 | - | - |
| MAX. INITIAL | 6 | 8 | - | 8 | 6 | 8 | - | 8 |
| MIN. GREEN | 5 | 8 | - | 8 | 5 | 8 | - | 8 |
| T B R | - | - | - | - | - | - | - | - |
| T T R | - | - | - | - | - | - | - | - |
| OBSERVE GAP | - | - | - | - | - | - | - | - |
| PASSAGE | 1 | 2 | - | 1 | 1 | 2 | - | 1 |
| MIN. GAP | 1 | 1 | - | 1 | 1 | 1 | - | 1 |
| ADDED ACTUATION | 1 | 2 | - | 2 | 1 | 2 | - | 2 |
| YELLOW | 3.2 | 3.9 | - | 3.5 | 3.2 | 3.9 | - | 3.5 |
| RED CLEAR | 1 | 1.5 | - | 1.5 | 1 | 1.5 | - | 1.5 |
| RED REVERT | - | - | - | - | - | - | - | - |
| WALK II | - | - | - | - | - | - | - | - |

- EQUIPMENT SPECIFICATIONS 2070 CONTROLLER**
- A. Controller Unit: The 2070L controller supplied shall meet the requirements outlined in CalTrans TEES 2002 (latest revision), and the following requirements:
- The 2070L controller shall have a 19" EIA rack mountable chassis (mated to the 170 cabinet).
 - 2070-1B CPU module with RJ-45 Ethernet port.
 - 2070-2A C1 field I/O module for compatibility with CalTrans style C1 connector.
 - 2070-3B 8X40 front panel with LCD display.
 - 2070-4A 10 amp power supply.
 - 2070-7A asynchronous serial communications module (RS-232).
 - Any unused slot position shall have a cover plate.
- B. Conflict Monitor: The Conflict Monitor supplied shall be 2010 ECL conflict monitor.

21ST ST. & FOUNDER'S CIRCLE

TRAFFIC SIGNAL PLAN

JAMES L. ARMOUR, P.E. - CITY ENGINEER
CITY OF WICHITA PROJECT NO. 472-84636

Professional Engineering Consultants, P.A.
303 S. TOPEKA • WICHITA, KANSAS 67202
316-262-2691 • FAX 316-262-3003

Designed by: WDH Job No.: 01616
Drawn by: SVB Date: August, 2008

SH. 131 of 282

DSNR: WDH OPER: SVB SCALE: 20
 1/2001/01616/SIGNALS/01616-SIGNAL FOUNDER'S CIR.DGN 3-12-2007 16:00:00 LAST REV: 5-22-2008 BY: svb