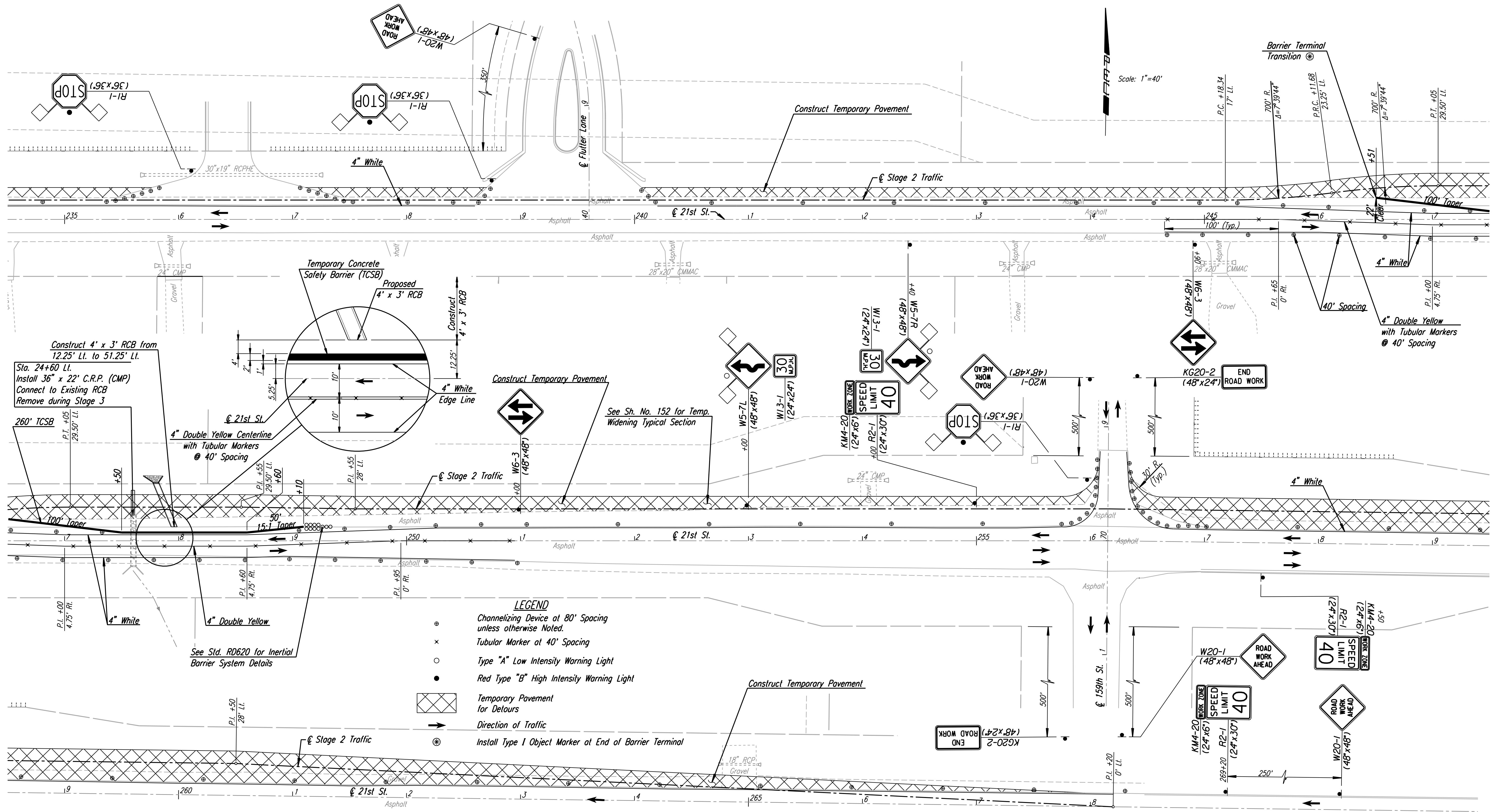


DSNR: WDH OPER: SVB SCALE: 1"=40'
 I:/2001/01616/Traffic Control/01616-T.C. Stage 1 2.35.DGN 12-20-2007 14:36:46 LAST REV: 5-23-2008 BY: svb



- LEGEND**
- ⊙ Channelizing Device at 80' Spacing unless otherwise Noted.
 - × Tubular Marker at 40' Spacing
 - Type "A" Low Intensity Warning Light
 - Red Type "B" High Intensity Warning Light
 - ▨ Temporary Pavement for Detours
 - Direction of Traffic
 - ⊛ Install Type 1 Object Marker at End of Barrier Terminal

Note: Utilities are not shown on Traffic Control Plans. The Contractor is responsible for verification as to type and location of underground utilities as may be necessary to avoid damage thereto. The Contractor is responsible for repairing any damage to underground utilities.

No.	Revision	By	Date
21ST ST.			
TRAFFIC CONTROL PLAN			
STAGE IB - STA. 235+00 TO STA. 268+00			
JAMES L. ARMOUR, P.E. - CITY ENGINEER CITY OF WICHITA PROJECT NO. 472-84636			
Professional Engineering Consultants, P.A.			
303 S. TOPEKA • WICHITA, KANSAS 67202 316-262-2691 • FAX 316-262-3003			
Designed by	WDH	Job No.	01616
Drawn by	SVB	Date	August, 2008
			Sht. 159 of 282

