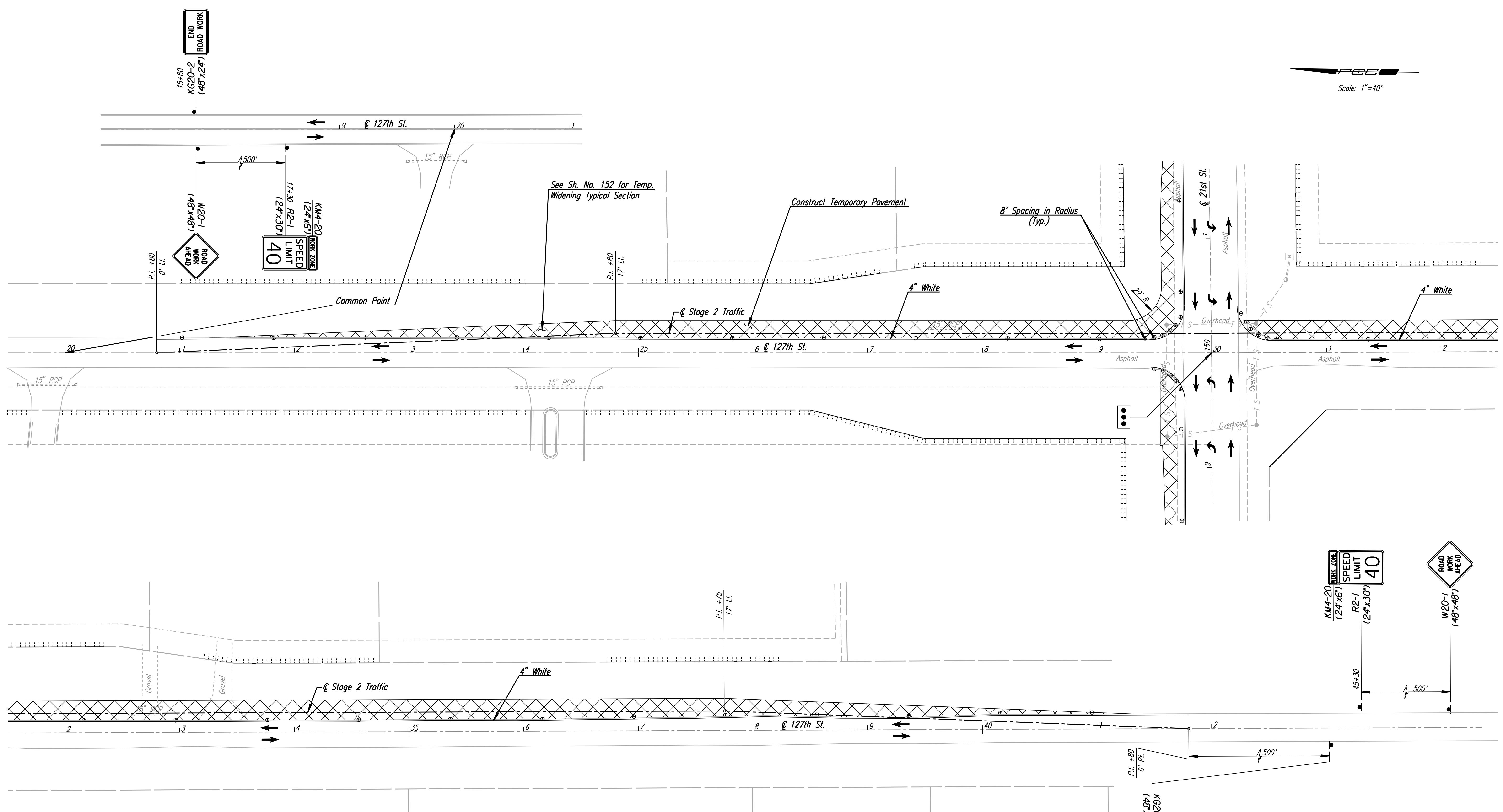


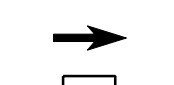
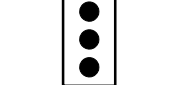


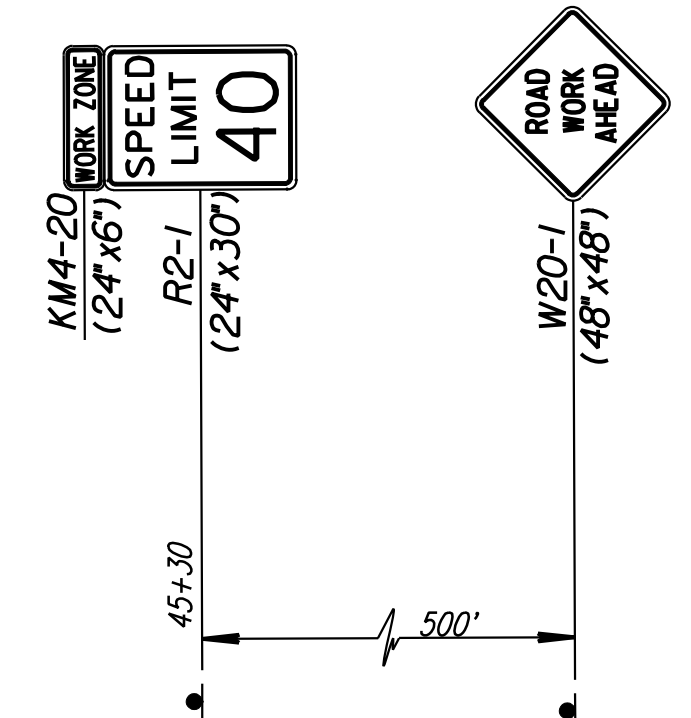
DSNR: WDH OPER: SVB SCALE: 1"=40'
 I:/2001/01616/Traffic Control/01616-T.C. Stage 1 127th.DGN 12-20-2007 14:36:46 LAST REV: 5-23-2008 BY: svb


 Scale: 1"=40'



Note: Utilities are not shown on Traffic Control Plans. The Contractor is responsible for verification as to type and location of underground utilities as may be necessary to avoid damage thereto. The Contractor is responsible for repairing any damage to underground utilities.

- LEGEND**
-  Channelizing Device at 80' Spacing unless otherwise Noted.
 -  Temporary Pavement for Detours
 -  Direction of Traffic
 -  Maintain Signalized Intersection



No.	Revision	By	Date
	127TH ST.		
TRAFFIC CONTROL PLAN			
STAGE 1B - STA. 19+00 TO STA. 42+00			
JAMES L. ARMOUR, P.E. - CITY ENGINEER CITY OF WICHITA PROJECT NO. 472-84636			
Professional Engineering Consultants, P.A. 303 S. TOPEKA • WICHITA, KANSAS 67202 316-262-2691 • FAX 316-262-3003			
Designed by	WDH	Job No.	01616
Drawn by	SVB	Date	August, 2008