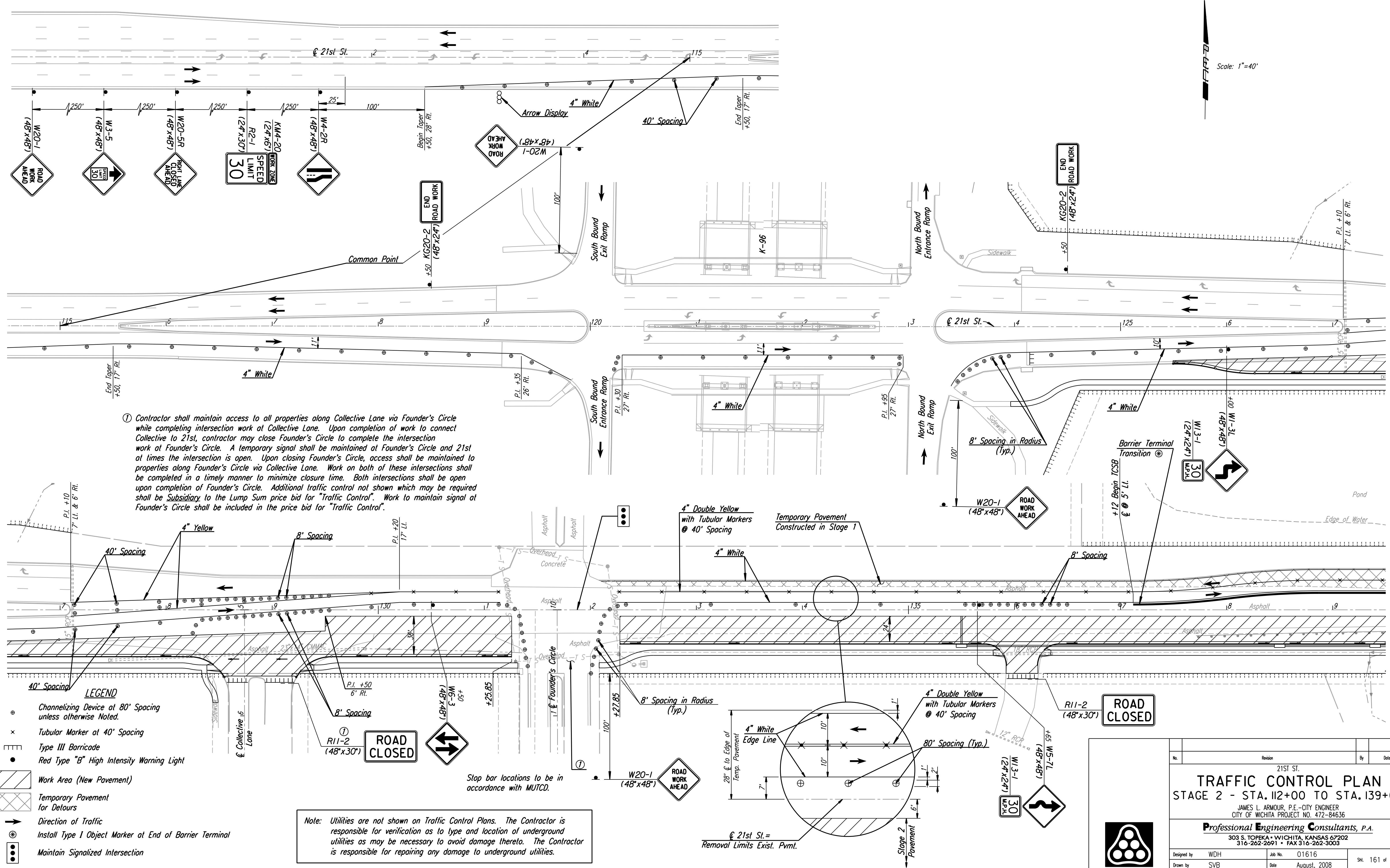


DSNR: WDH OPER: SVB SCALE: 1"=40'
 I:/2001/01616/Traffic Control/01616-T.C. Stage 2 115.DGN 8-20-2007 14:36:46 LAST REV: 5-23-2008 BY: svb



① Contractor shall maintain access to all properties along Collective Lane via Founder's Circle while completing intersection work at Collective Lane. Upon completion of work to connect Collective to 21st, contractor may close Founder's Circle to complete the intersection work at Founder's Circle. A temporary signal shall be maintained at Founder's Circle and 21st at times the intersection is open. Upon closing Founder's Circle, access shall be maintained to properties along Founder's Circle via Collective Lane. Work on both of these intersections shall be completed in a timely manner to minimize closure time. Both intersections shall be open upon completion of Founder's Circle. Additional traffic control not shown which may be required shall be Subsidiary to the Lump Sum price bid for "Traffic Control". Work to maintain signal at Founder's Circle shall be included in the price bid for "Traffic Control".

- LEGEND**
- ⊕ Channelizing Device at 80' Spacing unless otherwise Noted.
 - × Tubular Marker at 40' Spacing
 - ▬ Type III Barricade
 - Red Type "B" High Intensity Warning Light
 - ▨ Work Area (New Pavement)
 - ▩ Temporary Pavement for Detours
 - Direction of Traffic
 - ⊙ Install Type I Object Marker at End of Barrier Terminal
 - ⦿ Maintain Signalized Intersection

Note: Utilities are not shown on Traffic Control Plans. The Contractor is responsible for verification as to type and location of underground utilities as may be necessary to avoid damage thereto. The Contractor is responsible for repairing any damage to underground utilities.

21ST ST.		By	Date
TRAFFIC CONTROL PLAN			
STAGE 2 - STA. 112+00 TO STA. 139+00			
JAMES L. ARMOUR, P.E. - CITY ENGINEER CITY OF WICHITA PROJECT NO. 472-84636			
Professional Engineering Consultants, P.A. 303 S. TOPEKA • WICHITA, KANSAS 67202 316-262-2691 • FAX 316-262-3003			
Designed by	WDH	Job No.	01616
Drawn by	SVB	Date	August, 2008
			SH. 161 of 282