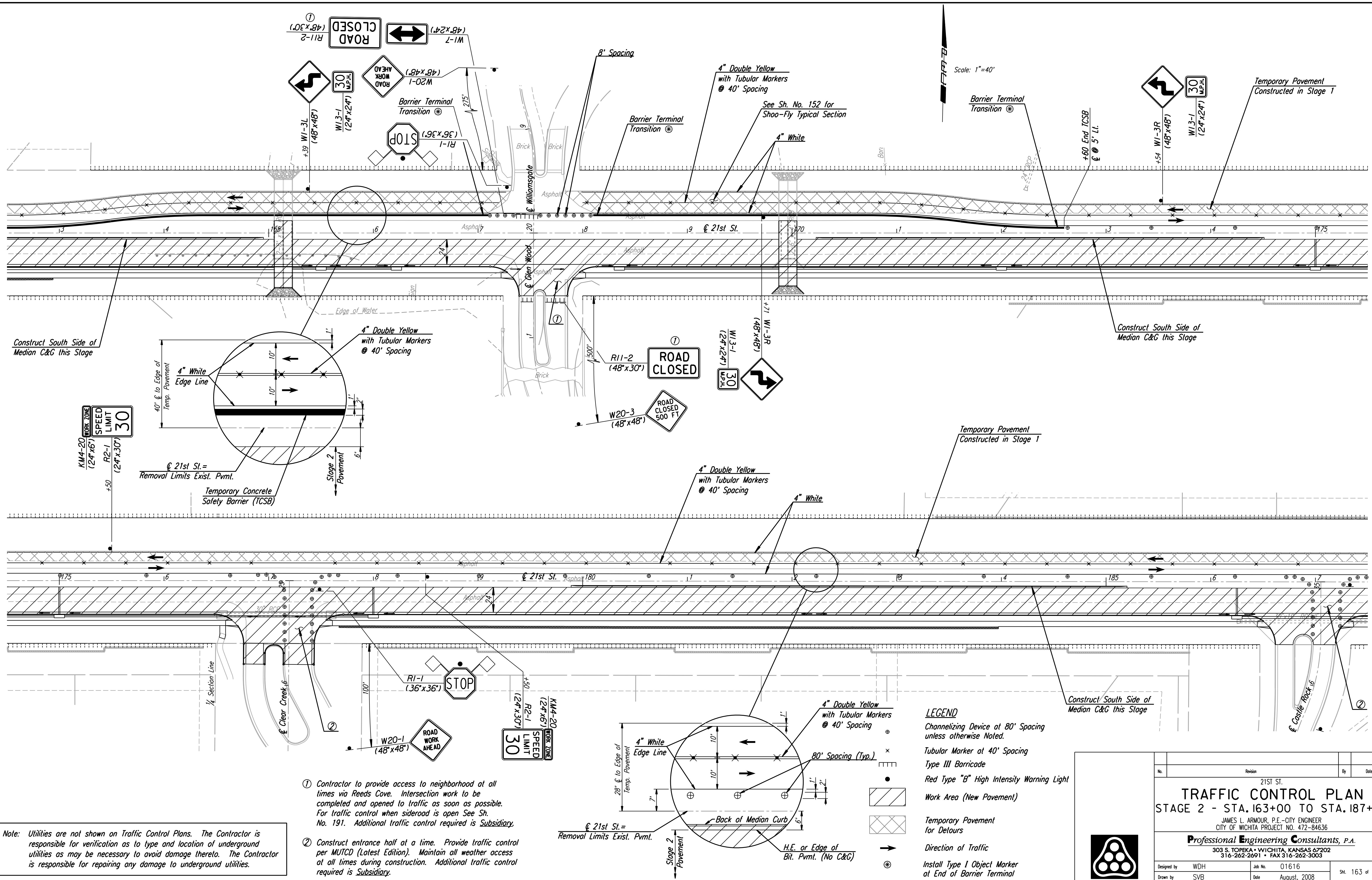
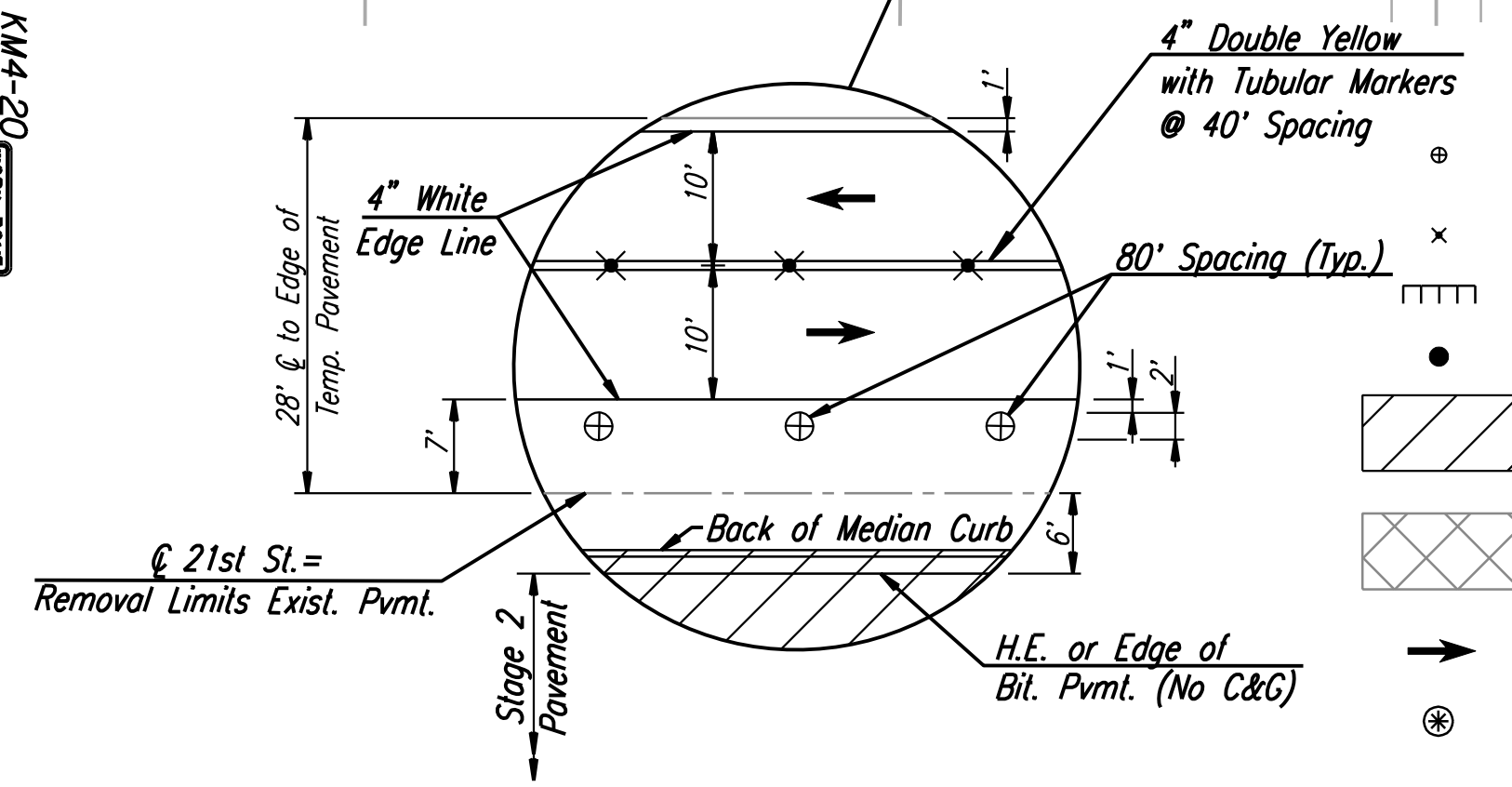


DSNR: WDH OPER: SVB SCALE: 1"=40' DATE: 8/20/01/01616/Traffic Control/01616-T.C. Stage 2 163.000 8-21-2007 14:36:46 LAST REV: BY:



Note: Utilities are not shown on Traffic Control Plans. The Contractor is responsible for verification as to type and location of underground utilities as may be necessary to avoid damage thereto. The Contractor is responsible for repairing any damage to underground utilities.

- ① Contractor to provide access to neighborhood at all times via Reeds Cove. Intersection work to be completed and opened to traffic as soon as possible. For traffic control when sideroad is open See Sh. No. 191. Additional traffic control required is Subsidiary.
- ② Construct entrance half at a time. Provide traffic control per MUTCD (Latest Edition). Maintain all weather access at all times during construction. Additional traffic control required is Subsidiary.



**LEGEND**  
 Channelizing Device at 80' Spacing unless otherwise noted.  
 Tubular Marker at 40' Spacing  
 Type III Barricade  
 Red Type "B" High Intensity Warning Light  
 Work Area (New Pavement)  
 Temporary Pavement for Detours  
 Direction of Traffic  
 Install Type I Object Marker at End of Barrier Terminal

No.	Revision	By	Date
			21ST ST.
<b>TRAFFIC CONTROL PLAN</b>			
<b>STAGE 2 - STA. 163+00 TO STA. 187+00</b>			
JAMES L. ARMOUR, P.E. - CITY ENGINEER CITY OF WICHITA PROJECT NO. 472-84636			
<b>Professional Engineering Consultants, P.A.</b> 303 S. TOPEKA • WICHITA, KANSAS 67202 316-262-2691 • FAX 316-262-3003			
Designed by	WDH	Job No.	01616
Drawn by	SVB	Date	August, 2008
			SH. 163 of 282