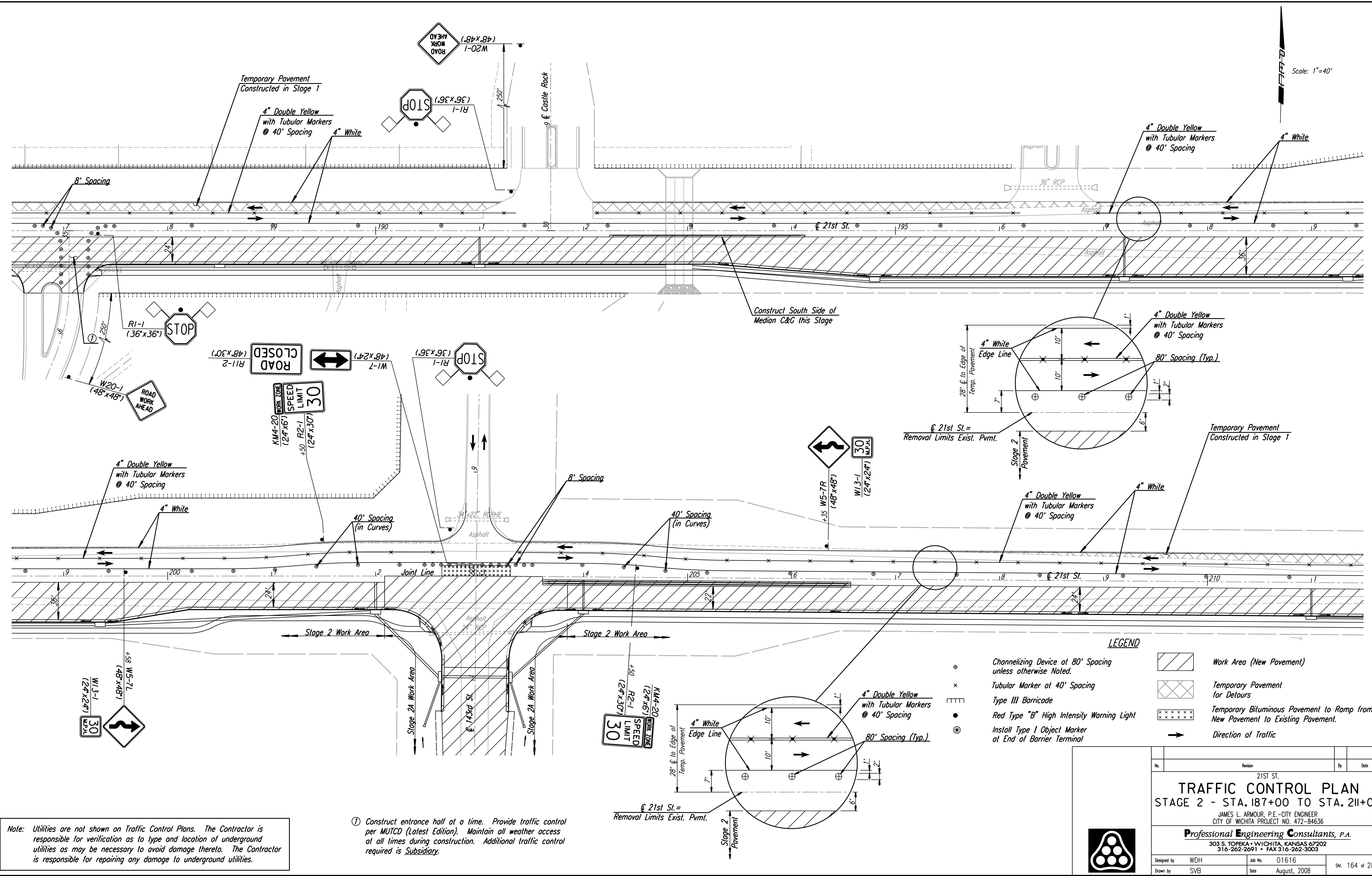


DSNR: WDH OPER: SVB SCALE: 1"=40' 8-21-2007 14:36:46 LAST REV: 5-23-2008 BY: svb
 I:\2001\01616\Traffic Control\01616-T.C. Stage 2 187.DGN



Scale: 1"=40'

Note: Utilities are not shown on Traffic Control Plans. The Contractor is responsible for verification as to type and location of underground utilities as may be necessary to avoid damage thereto. The Contractor is responsible for repairing any damage to underground utilities.

① Construct entrance half at a time. Provide traffic control per MUTCD (Latest Edition). Maintain all weather access at all times during construction. Additional traffic control required is Subsidiary.

LEGEND

- ⊙ Channelizing Device at 80' Spacing unless otherwise Noted.
- × Tubular Marker at 40' Spacing
- ⊔ Type III Barricade
- Red Type "B" High Intensity Warning Light
- ⊕ Install Type I Object Marker at End of Barrier Terminal
- Work Area (New Pavement)
- Temporary Pavement for Detours
- Temporary Bituminous Pavement to Ramp from New Pavement to Existing Pavement.
- Direction of Traffic

No.	Revision	By	Date
21ST ST.			
TRAFFIC CONTROL PLAN			
STAGE 2 - STA. 187+00 TO STA. 211+00			
JAMES L. ARMOUR, P.E. - CITY ENGINEER CITY OF WICHITA PROJECT NO. 472-84636			
Professional Engineering Consultants, P.A. 303 S. TOPEKA • WICHITA, KANSAS 67202 316-262-2691 • FAX 316-262-3003			
Designed by	WDH	Job No.	01616
Drawn by	SVB	Date	August, 2008
			Sht. 164 of 282