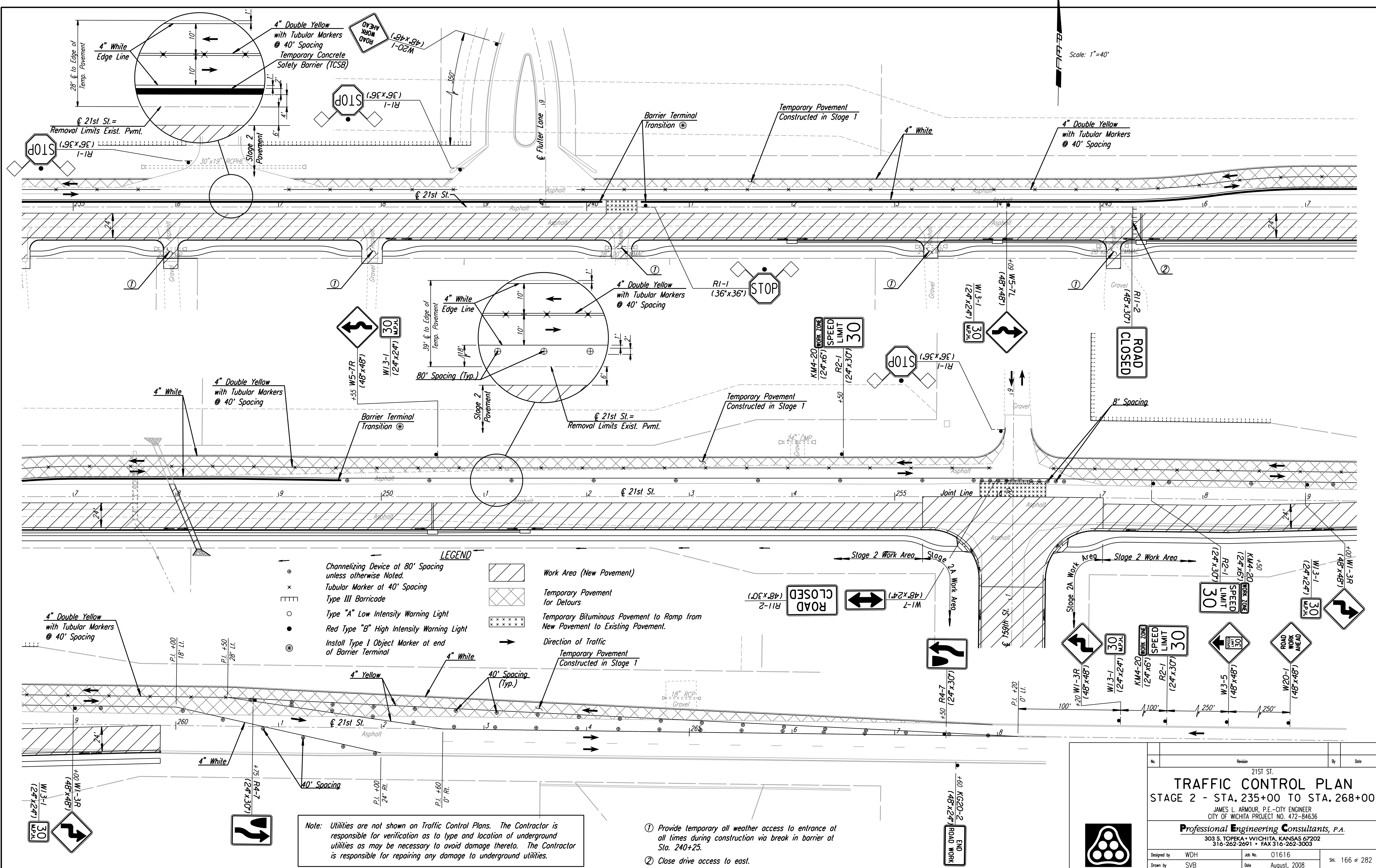


DSNR: WDH OPER: SVB SCALE: 1"=40'  
 I:/2001/01616/Traffic Control/01616-T.C. Stage 2 2.35.DGN 8-21-2007 14:36:46 LAST REV: 5-23-2008 BY: svb



Scale: 1"=40'

**LEGEND**

- ⊙ Channelizing Device at 80' Spacing unless otherwise Noted.
- ⊕ Tubular Marker at 40' Spacing
- ⊙ Type III Barricade
- ⊙ Type "A" Low Intensity Warning Light
- Red Type "B" High Intensity Warning Light
- ⊙ Install Type I Object Marker at end of Barrier Terminal
- Work Area (New Pavement)
- Temporary Pavement for Detours
- Temporary Bituminous Pavement to Ramp from New Pavement to Existing Pavement.
- Direction of Traffic
- Temporary Pavement Constructed in Stage 1

Note: Utilities are not shown on Traffic Control Plans. The Contractor is responsible for verification as to type and location of underground utilities as may be necessary to avoid damage thereto. The Contractor is responsible for repairing any damage to underground utilities.

- ① Provide temporary all weather access to entrance at all times during construction via break in barrier at Sta. 240+25.
- ② Close drive access to east.

No.	Revision	By	Date
<b>21ST ST.</b> <b>TRAFFIC CONTROL PLAN</b> <b>STAGE 2 - STA. 235+00 TO STA. 268+00</b> JAMES L. ARMOUR, P.E.-CITY ENGINEER CITY OF WICHITA PROJECT NO. 472-84636 <b>Professional Engineering Consultants, P.A.</b> 303 S. TOPEKA • WICHITA, KANSAS 67202 316-262-2691 • FAX 316-262-3003			
Designed by	WDH	Job No.	01616
Drawn by	SVB	Date	August, 2008
			Sht. 166 of 282