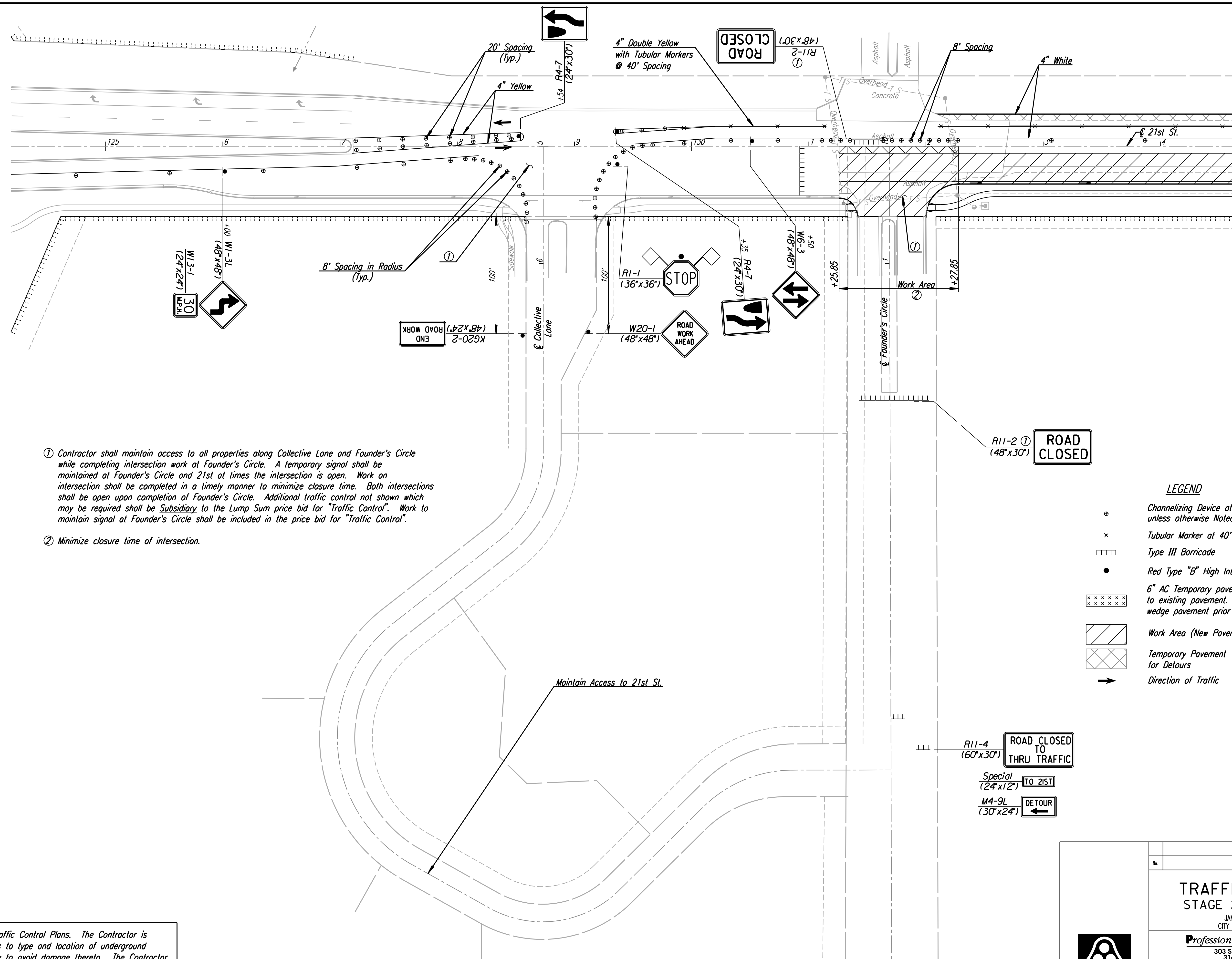


DSNR: WDH OPER: SVB SCALE: 1"=40'
 I:/2001/01616/Traffic Control/01616-T.C. Stage 2 Founders.DCN 12-28-2007 14:36:46 LAST REV: 5-23-2008 BY: svb



- ① Contractor shall maintain access to all properties along Collective Lane and Founder's Circle while completing intersection work at Founder's Circle. A temporary signal shall be maintained at Founder's Circle and 21st at times the intersection is open. Work on intersection shall be completed in a timely manner to minimize closure time. Both intersections shall be open upon completion of Founder's Circle. Additional traffic control not shown which may be required shall be Subsidiary to the Lump Sum price bid for "Traffic Control". Work to maintain signal at Founder's Circle shall be included in the price bid for "Traffic Control".
- ② Minimize closure time of intersection.

- LEGEND**
- ⊙ Channelizing Device at 80' Spacing unless otherwise Noted.
 - × Tubular Marker at 40' Spacing
 - ▤ Type III Barricade
 - Red Type "B" High Intensity Warning Light
 - ⊠ 6" AC Temporary pavement to ramp from new pavement to existing pavement. Remove existing pavement and place wedge pavement prior to shifting traffic.
 - ▨ Work Area (New Pavement)
 - ▩ Temporary Pavement for Detours
 - Direction of Traffic

Note: Utilities are not shown on Traffic Control Plans. The Contractor is responsible for verification as to type and location of underground utilities as may be necessary to avoid damage thereto. The Contractor is responsible for repairing any damage to underground utilities.

No.	Revision	By	Date
	21ST ST.		
TRAFFIC CONTROL PLAN STAGE 2 - FOUNDER'S CIRCLE			
JAMES L. ARMOUR, P.E. - CITY ENGINEER CITY OF WICHITA PROJECT NO. 472-84636			
Professional Engineering Consultants, P.A. 303 S. TOPEKA • WICHITA, KANSAS 67202 316-262-2691 • FAX 316-262-3003			
Designed by	WDH	Job No.	01616
Drawn by	SVB	Date	August, 2008

SHT. 167 of 282