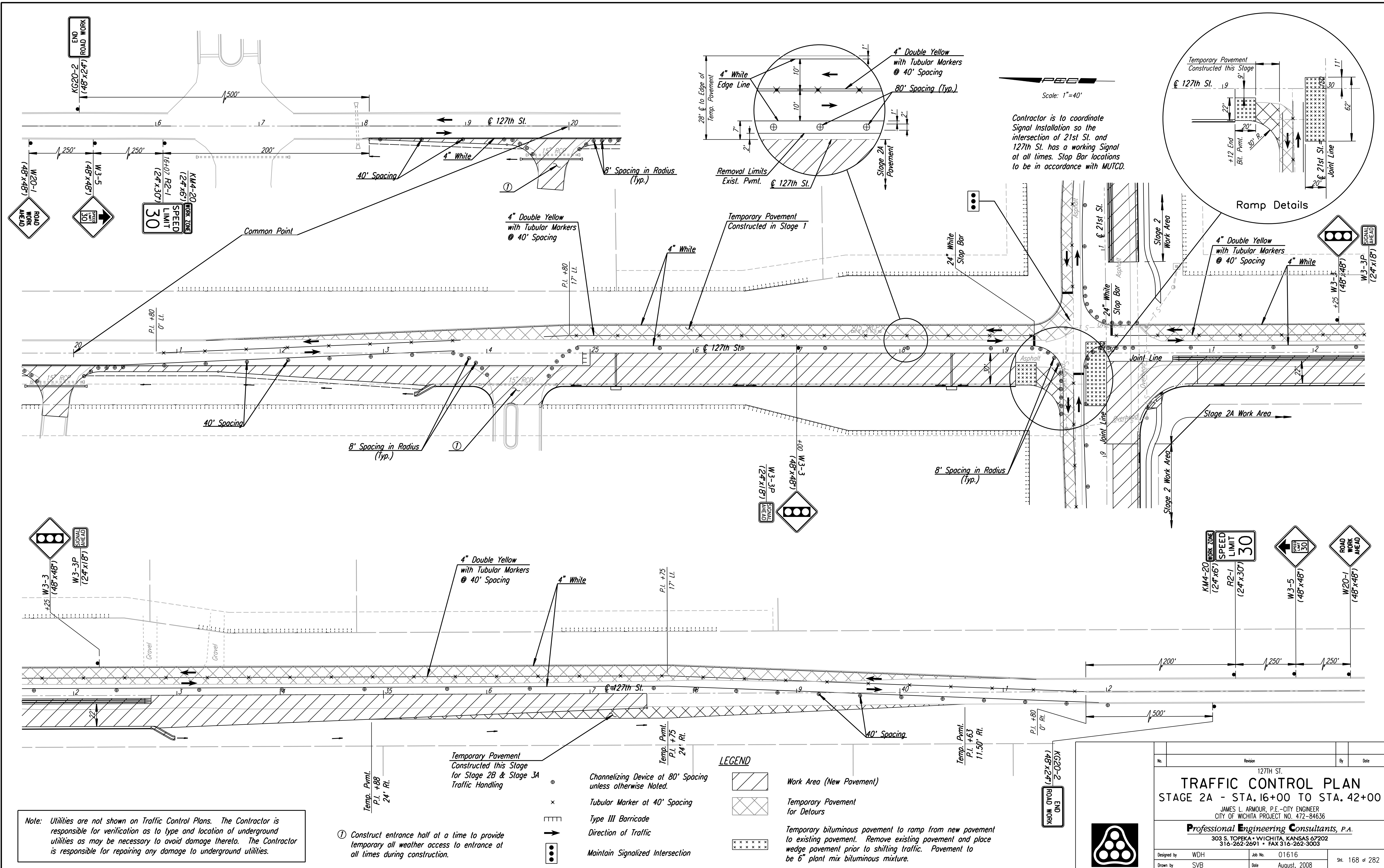


DSNR: WDH OPER: SVB SCALE: 1"=40' DATE: 8-21-2007 14:36:46 LAST REV: 5-23-2008 BY: svb



Note: Utilities are not shown on Traffic Control Plans. The Contractor is responsible for verification as to type and location of underground utilities as may be necessary to avoid damage thereto. The Contractor is responsible for repairing any damage to underground utilities.

① Construct entrance half at a time to provide temporary all weather access to entrance at all times during construction.

- LEGEND**
- Work Area (New Pavement)
 - Temporary Pavement for Detours
 - Channelizing Device at 80' Spacing unless otherwise noted.
 - Tubular Marker at 40' Spacing
 - Type III Barricade
 - Direction of Traffic
 - Maintain Signalized Intersection

Temporary bituminous pavement to ramp from new pavement to existing pavement. Remove existing pavement and place wedge pavement prior to shifting traffic. Pavement to be 6" plant mix bituminous mixture.

127TH ST.		By	Date
TRAFFIC CONTROL PLAN			
STAGE 2A - STA. 16+00 TO STA. 42+00			
JAMES L. ARMOUR, P.E. - CITY ENGINEER CITY OF WICHITA PROJECT NO. 472-84636			
Professional Engineering Consultants, P.A.			
303 S. TOPEKA • WICHITA, KANSAS 67202 316-262-2691 • FAX 316-262-3003			
Designed by	WDH	Job No.	01616
Drawn by	SVB	Date	August, 2008
			SHEET 168 OF 282