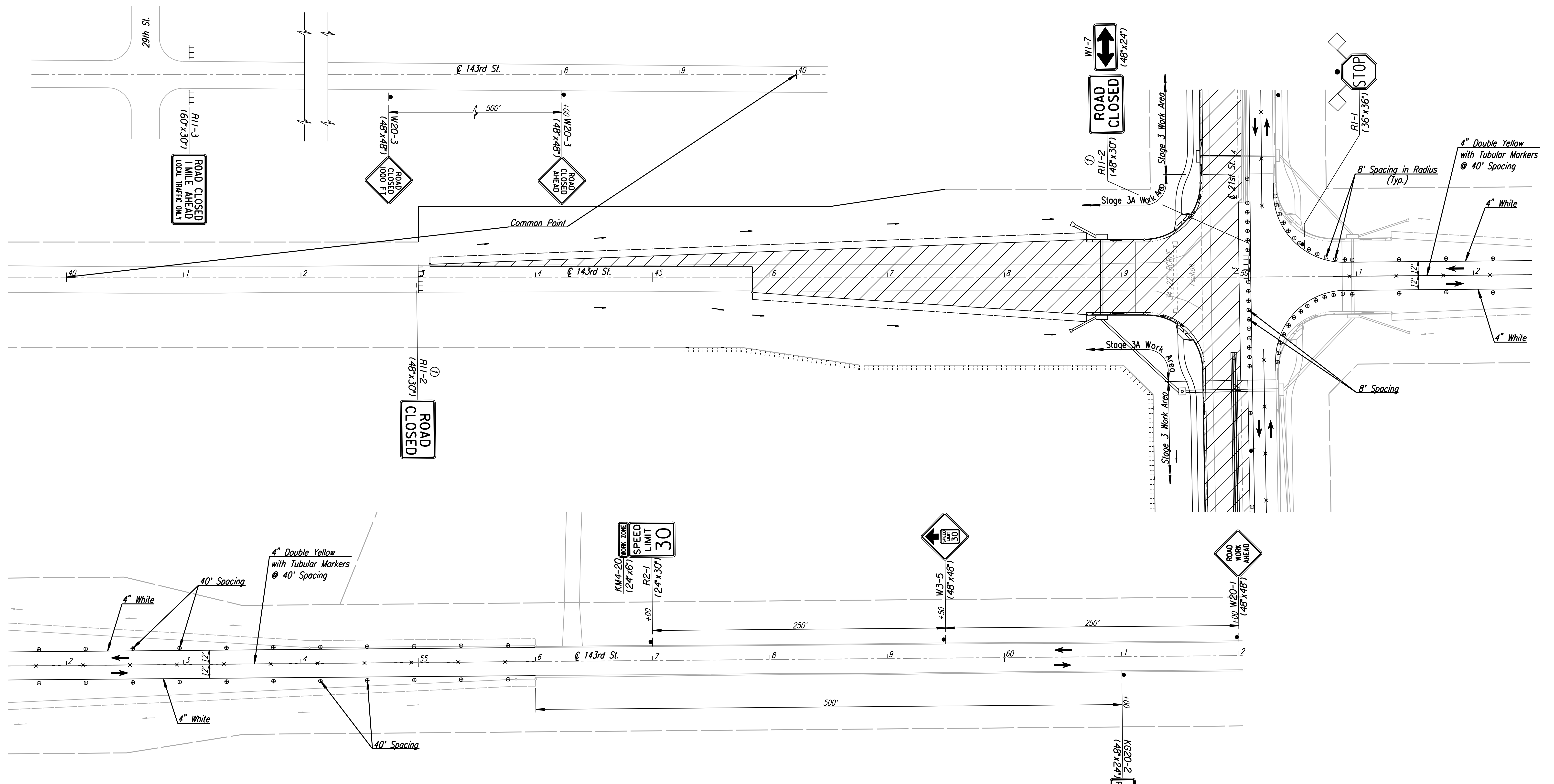


DSNR: WDH OPER: SVB SCALE: 1"=40' i:/2001/01616/Traffic Control/01616-T.C. Stage 3A 143rd.DCN 10-4-2007 14:36:46 LAST REV: 5-23-2008 BY: svb

Scale: 1"=40'



Note: Utilities are not shown on Traffic Control Plans. The Contractor is responsible for verification as to type and location of underground utilities as may be necessary to avoid damage thereto. The Contractor is responsible for repairing any damage to underground utilities.

① Contractor is to coordinate construction so 143rd St. is not closed at the same time Castle Rock & 159th St. are closed.

- LEGEND**
- Channelizing Device at 80' Spacing unless otherwise Noted.
 - Tubular Marker at 40' Spacing
 - Type III Barricade
 - Red Type "B" High Intensity Warning Light
 - Work Area (New Pavement)
 - Direction of Traffic

| | |
|--|---|
| 143RD ST. TRAFFIC CONTROL PLAN STAGE 3A - STA. 38+00 TO STA. 62+00 JAMES L. ARMOUR, P.E. - CITY ENGINEER CITY OF WICHITA PROJECT NO. 472-84636 Professional Engineering Consultants, P.A. 303 S. TOPEKA • WICHITA, KANSAS 67202 316-262-2691 • FAX 316-262-3003 | No. _____ By _____ Date _____ 143RD ST. 01616 August, 2008 SH. 181 of 282 |
|--|---|