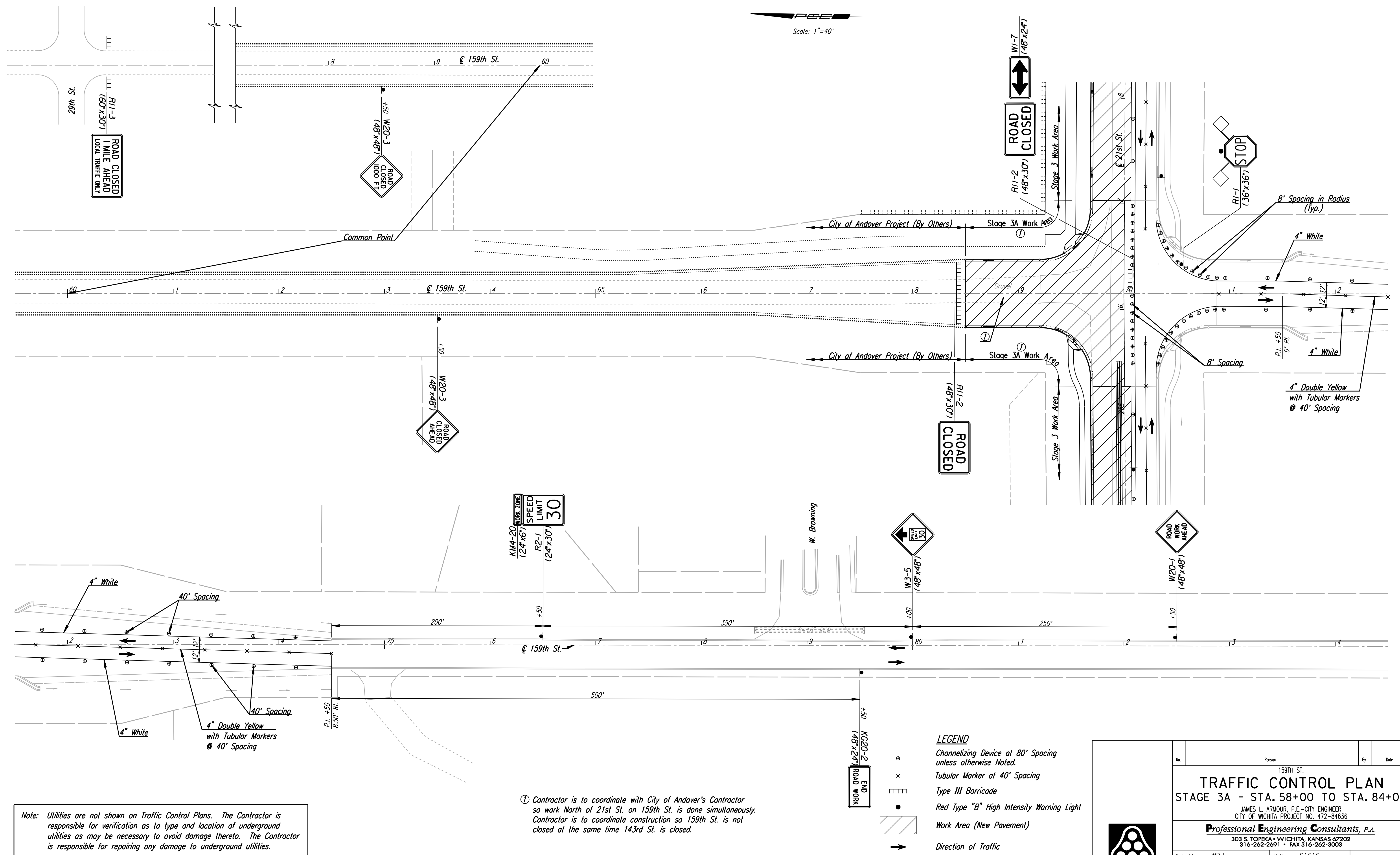
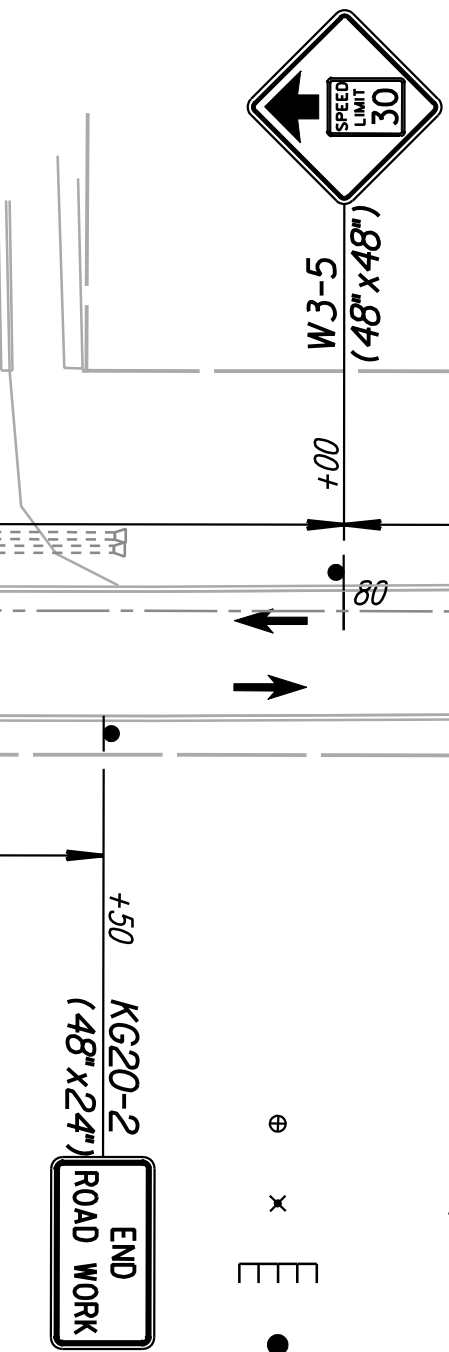


DSNR: WDH OPER: SVB SCALE: 1"=40' DATE: 10-4-2007 14:36:46 LAST REV: 5-23-2008 BY: svb  
 I:/2001/01616/Traffic Control/01616-T.C. Stage 3A 159th.DCN



Note: Utilities are not shown on Traffic Control Plans. The Contractor is responsible for verification as to type and location of underground utilities as may be necessary to avoid damage thereto. The Contractor is responsible for repairing any damage to underground utilities.

① Contractor is to coordinate with City of Andover's Contractor so work North of 21st St. on 159th St. is done simultaneously. Contractor is to coordinate construction so 159th St. is not closed at the same time 143rd St. is closed.



**LEGEND**  
 Channelizing Device at 80' Spacing unless otherwise Noted.  
 Tubular Marker at 40' Spacing  
 Type III Barricade  
 Red Type "B" High Intensity Warning Light  
 Work Area (New Pavement)  
 Direction of Traffic

No.	Revision	By	Date
	159TH ST.		
<b>TRAFFIC CONTROL PLAN</b>			
STAGE 3A - STA. 58+00 TO STA. 84+00			
JAMES L. ARMOUR, P.E. - CITY ENGINEER CITY OF WICHITA PROJECT NO. 472-84636			
<b>Professional Engineering Consultants, P.A.</b> 303 S. TOPEKA • WICHITA, KANSAS 67202 316-262-2691 • FAX 316-262-3003			
Designed by	WDH	Job No.	01616
Drawn by	SVB	Date	August, 2008
			SH. 182 of 282