

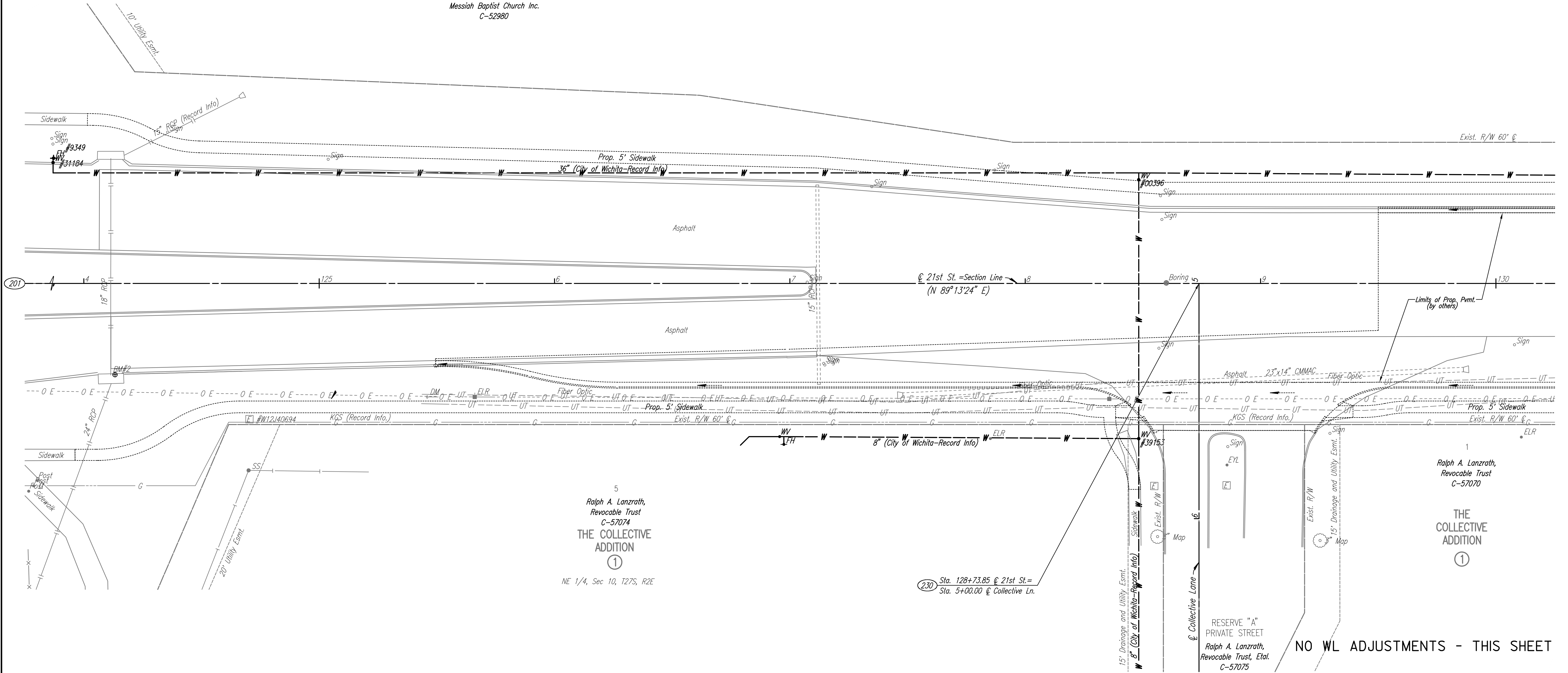
- S 1/4 Cor., Sec. 3, T27S, R2E (201)
1. Found 5/8" Bar with Forgy Cap.
 2. Northeast Cap Bolt of Signal Light Pole. 14.28' S
 3. Chiseled "+" Center of West Edge Traffic Manhole Base. 20.20' E
 4. Chiseled "+" in Top of Curb of Island Nose. 23.90' W
 5. Chiseled "+" in Top of Curb. 14.15' N

SE 1/4, Sec 3, T27S, R2E

MESSIAH BAPTIST CHURCH 4th ADDITION

(A)
1
Messiah Baptist Church Inc.
C-52980

Scale: 1"=20'



5
Ralph A. Lanzrath,
Revocable Trust
C-57074
THE COLLECTIVE
ADDITION
①
NE 1/4, Sec 10, T27S, R2E

1
Ralph A. Lanzrath,
Revocable Trust
C-57070
THE COLLECTIVE
ADDITION
①

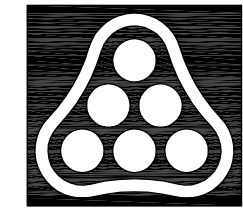
(230) Sta. 128+73.85 @ 21st St.=
Sta. 5+00.00 @ Collective Ln.

RESERVE "A"
PRIVATE STREET
Ralph A. Lanzrath,
Revocable Trust, Etal.
C-57075

NO WL ADJUSTMENTS - THIS SHEET

- UTILITIES
- Gas Kansas Gas Service
 - Power Westar Energy
 - San. Sewer Wichita Water Utilities
 - Telephone AT&T
 - Water Wichita Water Utilities

BM #2 Chis. "+" Center face Curb Inlet @ SE Cor.
K-96 Ramp and 21st N.
39° Rt. Sta. 124+13 Elev. 1371.69



No.	Revision	By	Date
21ST STREET N. - FROM K-96 TO 159TH STREET E. WATERLINE ADJUSTMENTS STA. 124+00 TO STA. 130+00 JAMES L. ARMOUR, P.E. - CITY ENGINEER CITY OF WICHITA PROJECT NO. 448-90380 Professional Engineering Consultants, P.A. 303 S. TOPEKA • WICHITA, KANSAS 67202 316-262-2691 • FAX 316-262-3003			
Designed by	MDK	Job No.	35-01616-002
Drawn by		Date	JANUARY 2003
			Sht. B4 of 40

Saved 08-14-2008 8:38:54 AM by CSL
 C:\2007\01616\002\bar124