

MESSIAH BAPTIST CHURCH 4th ADDITION

(A)

Messiah Baptist Church Inc.
C-52980

N: 1,699,887.0423, E: 1,689,650.2665
@ 21st St. N., Sta. 131+41.00, 48' Lt.
Adjust Existing Water Meter
Existing Top of Box Elev.= 1382.33 *
Proposed Top of Box Elev.= 1382.27
Total Adjustment = -0.06'

N: 1,699,883.3254, E: 1,689,708.5554
@ 21st St. N., Sta. 131+99.00, 44' Lt.
Adjust Existing Water Valve (C.O.W. #31180)
Existing Top of Box Elev.= 1382.21
Proposed Top of Box Elev.= 1381.93
Total Adjustment = -0.28'

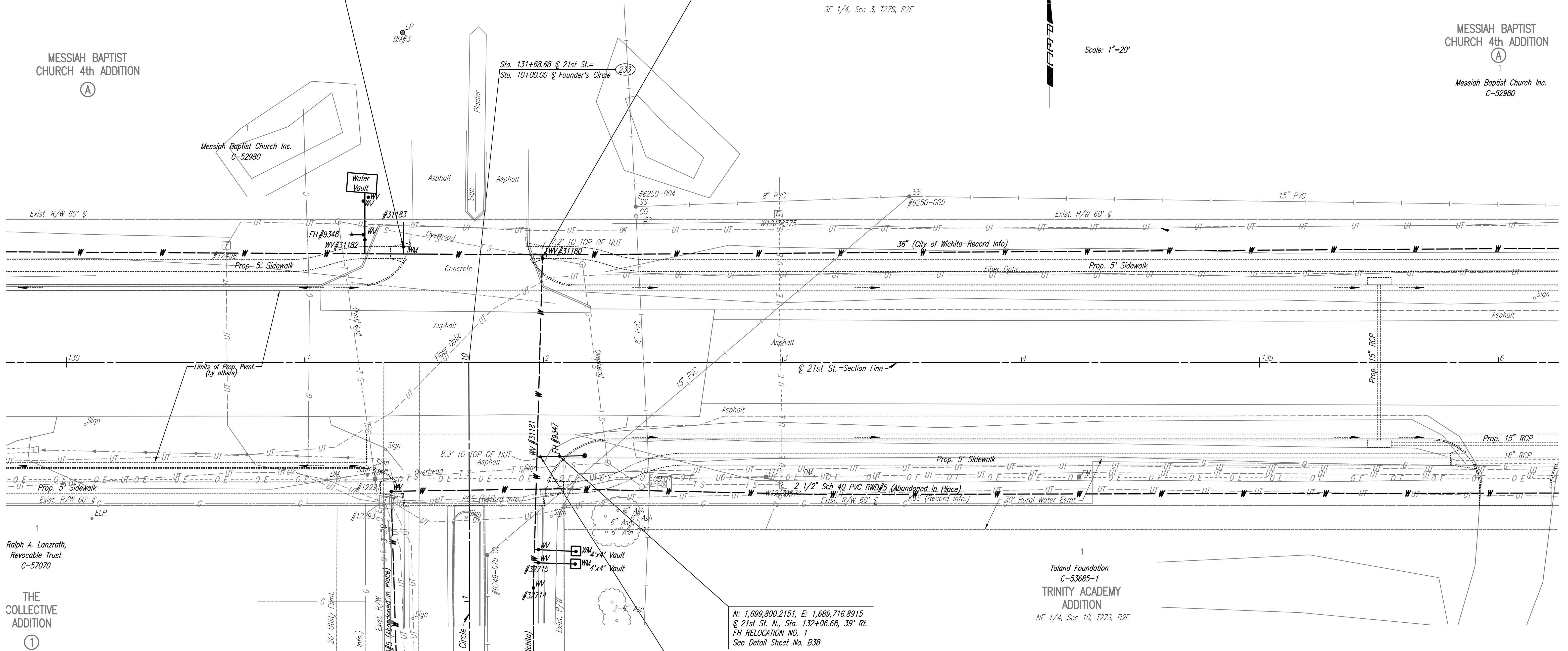
SE 1/4, Sec 3, T27S, R2E

MESSIAH BAPTIST CHURCH 4th ADDITION

(A)

Messiah Baptist Church Inc.
C-52980

Scale: 1"=20'



Ralph A. Lanzrath,
Revocable Trust
C-57070

THE COLLECTIVE ADDITION

(1)

Taland Foundation
C-53685-1
TRINITY ACADEMY ADDITION
NE 1/4, Sec 10, T27S, R2E

N: 1,699,800.2151, E: 1,689,716.8915
@ 21st St. N., Sta. 132+06.68, 39' Rt.
FH RELOCATION NO. 1
See Detail Sheet No. B38

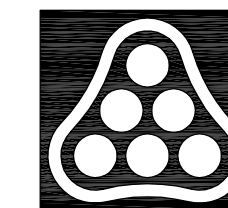
N: 1,699,799.8933, E: 1,689,708.8987
@ 21st St. N., Sta. 131+99.00, 40' Rt.
Adjust Existing Water Valve (C.O.W. #31181)
Existing Top of Box Elev.= 1381.99
Proposed Top of Box Elev.= 1380.69
Total Adjustment = -1.30'
See Detail Sheet No. B38

BM #3 Chis. "a" S side Top Conc. light base, 1st light
N of 21st St. N. in Messiah Baptist Church Dr.
138.09' Lt. Sta. 131+40.96 Elev. 1385.66

* EXISTING ELEVATION IS FROM RECORD INFORMATION.
CONTRACTOR SHALL VERIFY ACTUAL TOP OF VALVE BOX ELEVATION.

UTILITIES

- Gas Kansas Gas Service
- Power Westar Energy
- San. Sewer Wichita Water Utilities
- Telephone AT&T
- Water Wichita Water Utilities
- Water RWD #5



No.	Revision	By	Date
21ST STREET N. - FROM K-96 TO 159TH STREET E. WATERLINE ADJUSTMENTS			
STA. 130+00 TO STA. 136+00			
JAMES L. ARMOUR, P.E. - CITY ENGINEER CITY OF WICHITA PROJECT NO. 448-90380			
Professional Engineering Consultants, P.A. 303 S. TOPEKA • WICHITA, KANSAS 67202 316-262-2691 • FAX 316-262-3003			
Designed by	MDK	Job No.	35-01616-002
Drawn by		Date	JANUARY 2003
			Sht. B5 of 40