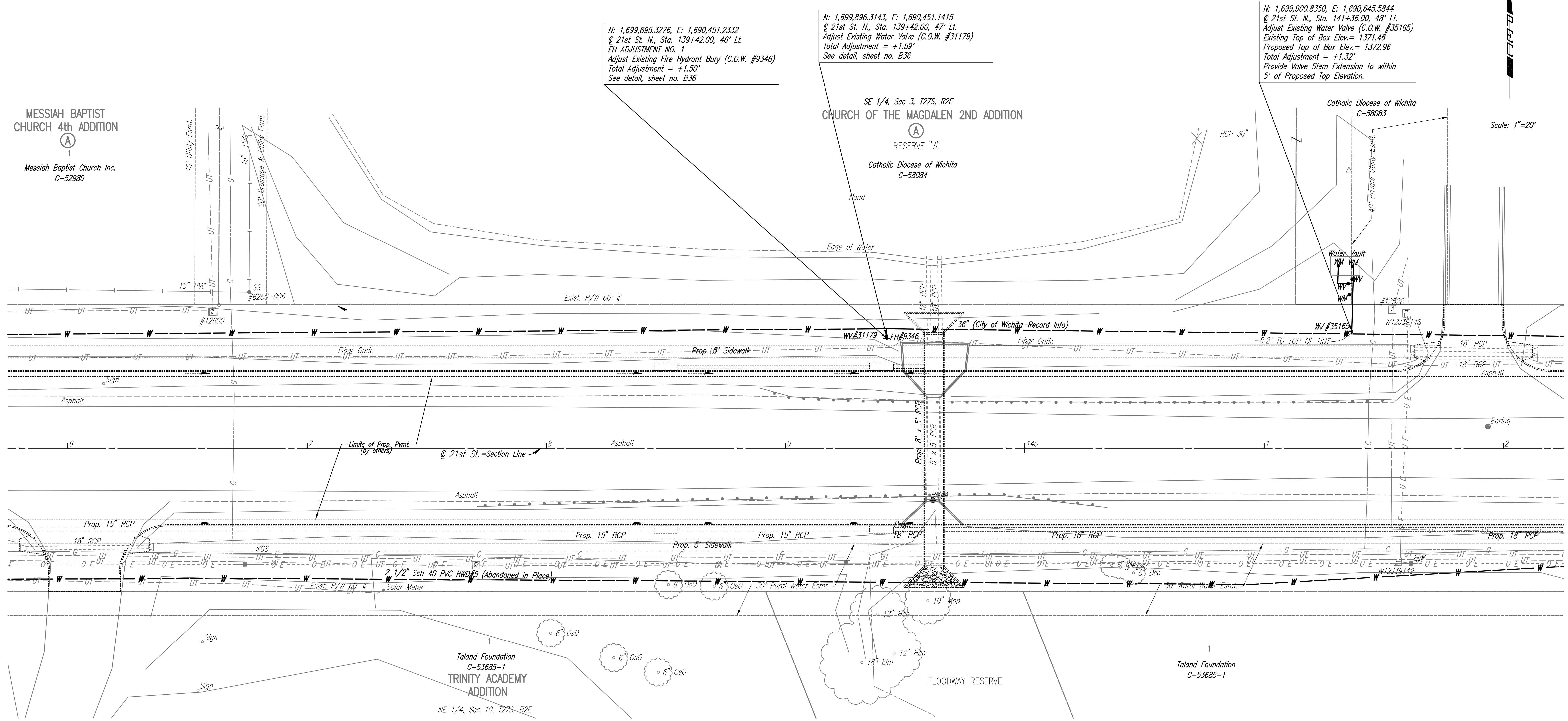


Scale: 1"=20'



N: 1,699,895.3276, E: 1,690,451.2332
 @ 21st St. N., Sta. 139+42.00, 46' Lt.
 FH ADJUSTMENT NO. 1
 Adjust Existing Fire Hydrant Bury (C.O.W. #9346)
 Total Adjustment = +1.50'
 See detail, sheet no. B36

N: 1,699,896.3143, E: 1,690,451.1415
 @ 21st St. N., Sta. 139+42.00, 47' Lt.
 Adjust Existing Water Valve (C.O.W. #31179)
 Total Adjustment = +1.59'
 See detail, sheet no. B36

N: 1,699,900.8350, E: 1,690,645.5844
 @ 21st St. N., Sta. 141+36.00, 48' Lt.
 Adjust Existing Water Valve (C.O.W. #35165)
 Existing Top of Box Elev. = 1371.46
 Proposed Top of Box Elev. = 1372.96
 Total Adjustment = +1.32'
 Provide Valve Stem Extension to within
 5' of Proposed Top Elevation.

MESSIAH BAPTIST
 CHURCH 4th ADDITION
 (A)
 Messiah Baptist Church Inc.
 C-52980

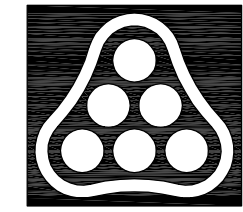
SE 1/4, Sec 3, T27S, R2E
 CHURCH OF THE MAGDALEN 2ND ADDITION
 (A)
 RESERVE "A"
 Catholic Diocese of Wichita
 C-58084

Catholic Diocese of Wichita
 C-58083

Taland Foundation
 C-53685-1
 TRINITY ACADEMY
 ADDITION
 NE 1/4, Sec 10, T27S, R2E

- UTILITIES
- Gas Kansas Gas Service
 - Power Westar Energy
 - San. Sewer Wichita Water Utilities
 - Telephone AT&T
 - Water Wichita Water Utilities
 - Water RWD #5

BM #4 Chis. "a" Center S headwall RCBC under 21st
 St. N. between K-96 & 127th E.
 21.89' Rt. Sta. 139+61.60 Elev. 1371.37



No.	Revision	By	Date
21ST STREET N. - FROM K-96 TO 159TH STREET E. WATERLINE ADJUSTMENTS STA. 136+00 TO STA. 142+00 JAMES L. ARMOUR, P.E. - CITY ENGINEER CITY OF WICHITA PROJECT NO. 448-90380 Professional Engineering Consultants, P.A. 303 S. TOPEKA • WICHITA, KANSAS 67202 316-262-2691 • FAX 316-262-3003			
Designed by	MDK	Job No.	35-01616-002
Drawn by		Date	JANUARY 2003