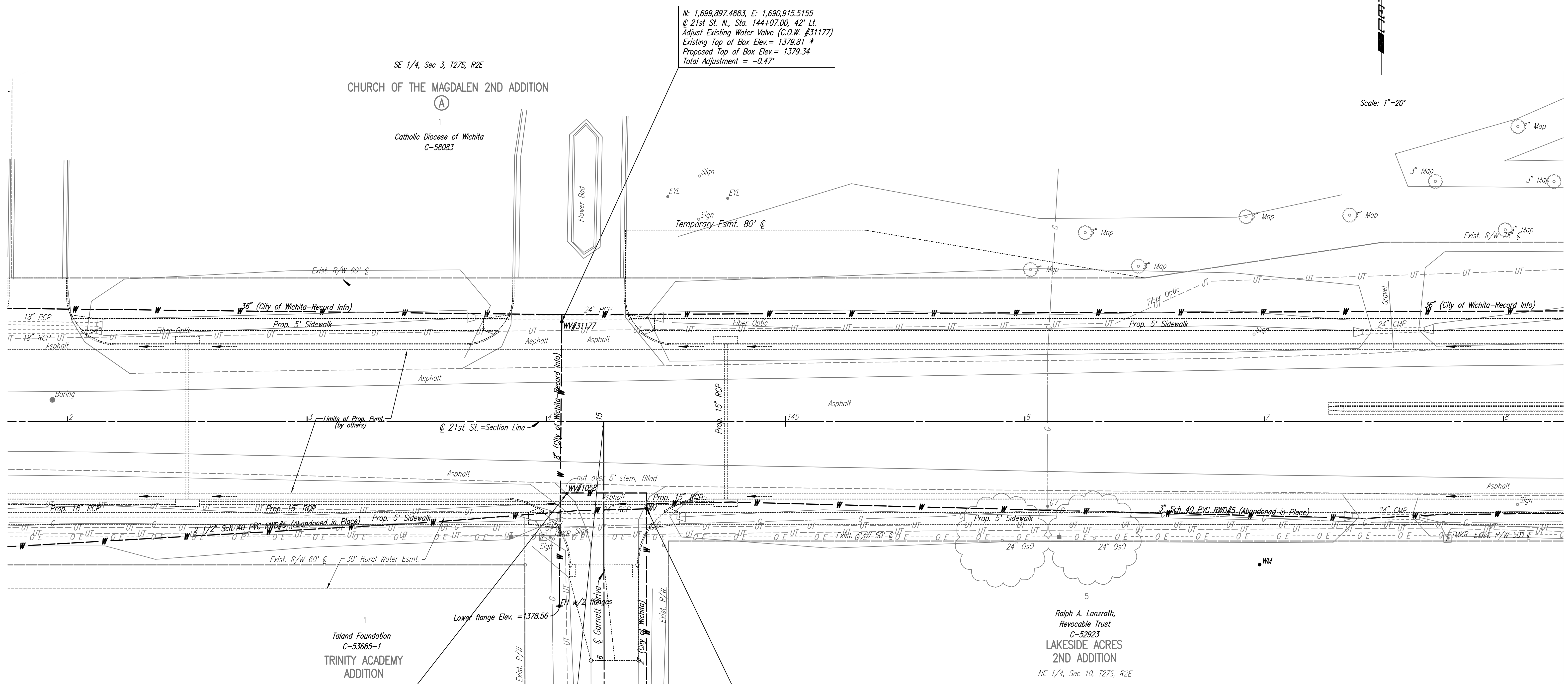


Scale: 1"=20'

SE 1/4, Sec 3, T27S, R2E  
CHURCH OF THE MAGDALEN 2ND ADDITION  
1  
Catholic Diocese of Wichita  
C-58083

N: 1,699,897.4883, E: 1,690,915.5155  
@ 21st St. N., Sta. 144+07.00, 42' Lt.  
Adjust Existing Water Valve (C.O.W. #31177)  
Existing Top of Box Elev.= 1379.81 \*  
Proposed Top of Box Elev.= 1379.34  
Total Adjustment = -0.47'



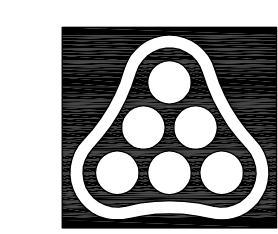
N: 1,699,825.6248, E: 1,690,918.5269  
@ 21st St. N., Sta. 144+08.00, 30' Rt.  
Adjust Existing Water Valve (C.O.W. #1058)  
Existing Top of Box Elev.= 1379.16  
Proposed Top of Box Elev.= 1378.74  
Total Adjustment = -0.42'

N: 1,699,819.8703, E: 1,690,952.0135  
@ 21st St. N., Sta. 144+42.00, 36' Rt.  
Adjust Existing Water Valve  
Existing Top of Box Elev.= 1378.76 \*  
Proposed Top of Box Elev.= 1379.27  
Total Adjustment = +0.51'  
Provide Valve Stem Extension to within 5' of Proposed Top Elevation.

Sta. 144+24.00 @ 21st St. = (234)  
Sta. 15+00.00 @ Garnett Dr.

\* EXISTING ELEVATION IS FROM RECORD INFORMATION.  
CONTRACTOR SHALL VERIFY ACTUAL TOP OF VALVE BOX ELEVATION.

- UTILITIES
- Gas Kansas Gas Service
  - Power Westar Energy
  - Telephone AT&T
  - Water Wichita Water Utilities
  - Water RWD #5



No.	Revision	By	Date
21ST STREET N. - FROM K-96 TO 159TH STREET E. WATERLINE ADJUSTMENTS STA. 142+00 TO STA. 148+00			
JAMES L. ARMOUR, P.E. - CITY ENGINEER CITY OF WICHITA PROJECT NO. 448-90380			
<b>Professional Engineering Consultants, P.A.</b> 303 S. TOPEKA • WICHITA, KANSAS 67202 316-262-2691 • FAX 316-262-3003			
Designed by	MDK	Job No.	35-01616-002
Drawn by		Date	JANUARY 2003
			Sht. B7 of 40

Saved 08-14-2008 9:19:12 AM by RW  
Q:\2007\01616\002\bar142