

N: 1,699,914.5155, E: 1,691,544.1415
 @ 21st St. N., Sta. 150+36.00, 50' Lt.
 Adjust Existing Water Valve (C.O.W. #31174)
 Existing Top of Box Elev. = 1384.37
 Proposed Top of Box Elev. = 1383.52
 Total Adjustment = -0.85'

SW Cor., Sec. 2, T27S, R2E (204)
 1. Found 3/4" Iron Pipe with Moehring Cap Set over Exist. Cor.
 2. Pipe Marker 57.32' SW
 3. 3 Nails in Power Pole. 81.88' SW

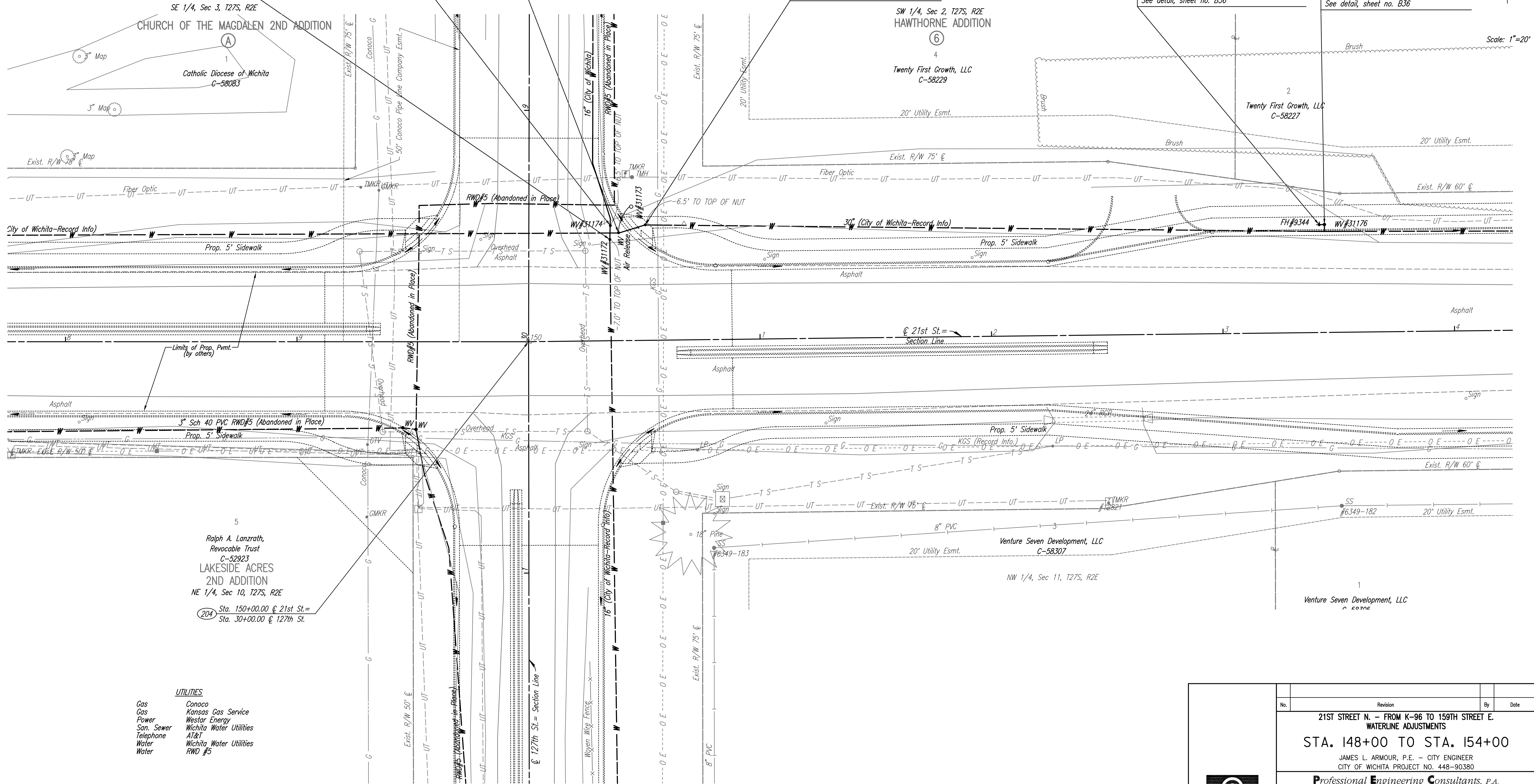
N: 1,699,908.5026, E: 1,691,544.0234
 @ 21st St. N., Sta. 150+36.00, 44' Lt.
 Adjust Existing Water Valve (C.O.W. #31172)
 Existing Top of Box Elev. = 1384.00
 Proposed Top of Box Elev. = 1383.56
 Total Adjustment = -0.44'

N: 1,699,911.4481, E: 1,691,547.7294
 @ 21st St. N., Sta. 150+40.00, 47' Lt.
 Relocate Existing Air Release Valve
 See detail, sheet no. B40

N: 1,699,915.0500, E: 1,691,559.2430
 @ 21st St. N., Sta. 150+51.00, 50' Lt.
 Adjust Existing Water Valve (C.O.W. #31173)
 Existing Top of Box Elev. = 1384.09
 Proposed Top of Box Elev. = 1383.90
 Total Adjustment = -0.19'

N: 1,699,919.0266, E: 1,691,850.2798
 @ 21st St. N., Sta. 153+42.00, 46' Lt.
 FH ADJUSTMENT NO. 2
 Adjust Existing Fire Hydrant Bury (C.O.W. #9344)
 Total Adjustment = -1.00'
 See detail, sheet no. B36

N: 1,699,919.1513, E: 1,691,852.5625
 @ 21st St. N., Sta. 153+44.00, 47' Lt.
 Adjust Existing Water Valve (C.O.W. #31176)
 Total Adjustment = -1.04'
 See detail, sheet no. B36



SE 1/4, Sec 3, T27S, R2E
CHURCH OF THE MAGDALEN 2ND ADDITION
 Catholic Diocese of Wichita
 C-58083

SW 1/4, Sec 2, T27S, R2E
 (6)
HAWTHORNE ADDITION
 Twenty First Growth, LLC
 C-58229

Twenty First Growth, LLC
 C-58227

5
 Ralph A. Lanzrath,
 Revocable Trust
 C-52923
LAKESIDE ACRES
 2ND ADDITION
 NE 1/4, Sec 10, T27S, R2E

Venture Seven Development, LLC
 C-58307

Venture Seven Development, LLC
 C-58296

- UTILITIES**
- Gas Conoco
 - Gas Kansas Gas Service
 - Power Westar Energy
 - San. Sewer Wichita Water Utilities
 - Telephone AT&T
 - Water Wichita Water Utilities
 - Water RWD #5

No.	Revision	By	Date
21ST STREET N. - FROM K-96 TO 159TH STREET E. WATERLINE ADJUSTMENTS STA. 148+00 TO STA. 154+00 JAMES L. ARMOUR, P.E. - CITY ENGINEER CITY OF WICHITA PROJECT NO. 448-90380 Professional Engineering Consultants, P.A. 303 S. TOPEKA • WICHITA, KANSAS 67202 316-262-2691 • FAX 316-262-3003			
Designed by	MDK	Job No.	35-01616-002
Drawn by		Date	JANUARY 2003

