

Scale: 1"=20'

N: 1,699,924.2333, E: 1,692,362.3565
@ 21st St. N., Sta. 158+54.00, 39' Lt.
Adjust Existing Water Valve (C.O.W. #34993)
Existing Top of Box Elev.= 1362.01 *
Proposed Top of Box Elev.= 1361.73
Total Adjustment = -0.28'

N: 1,699,926.2263, E: 1,692,363.2385
@ 21st St. N., Sta. 158+55.00, 41' Lt.
Adjust Existing Water Valve (C.O.W. #34994)
Total Adjustment = -0.42'
See detail, sheet no. B36

N: 1,699,926.4616, E: 1,692,368.3028
@ 21st St. N., Sta. 158+60.00, 40' Lt.
FH ADJUSTMENT NO. 3
Adjust Existing Water Valve (C.O.W. #10562)
Total Adjustment = -1.00'
See detail, sheet no. B36

SW 1/4, Sec 2, T27S, R2E
HAWTHORNE ADDITION
⑥

HAWTHORNE 4TH ADDITION
①

2
Twenty First Growth, LLC
C-58227

5
Twenty First Growth, LLC
C-58230

6
Twenty First Growth, LLC
C-58231

9
Twenty First Growth, LLC
C-60457

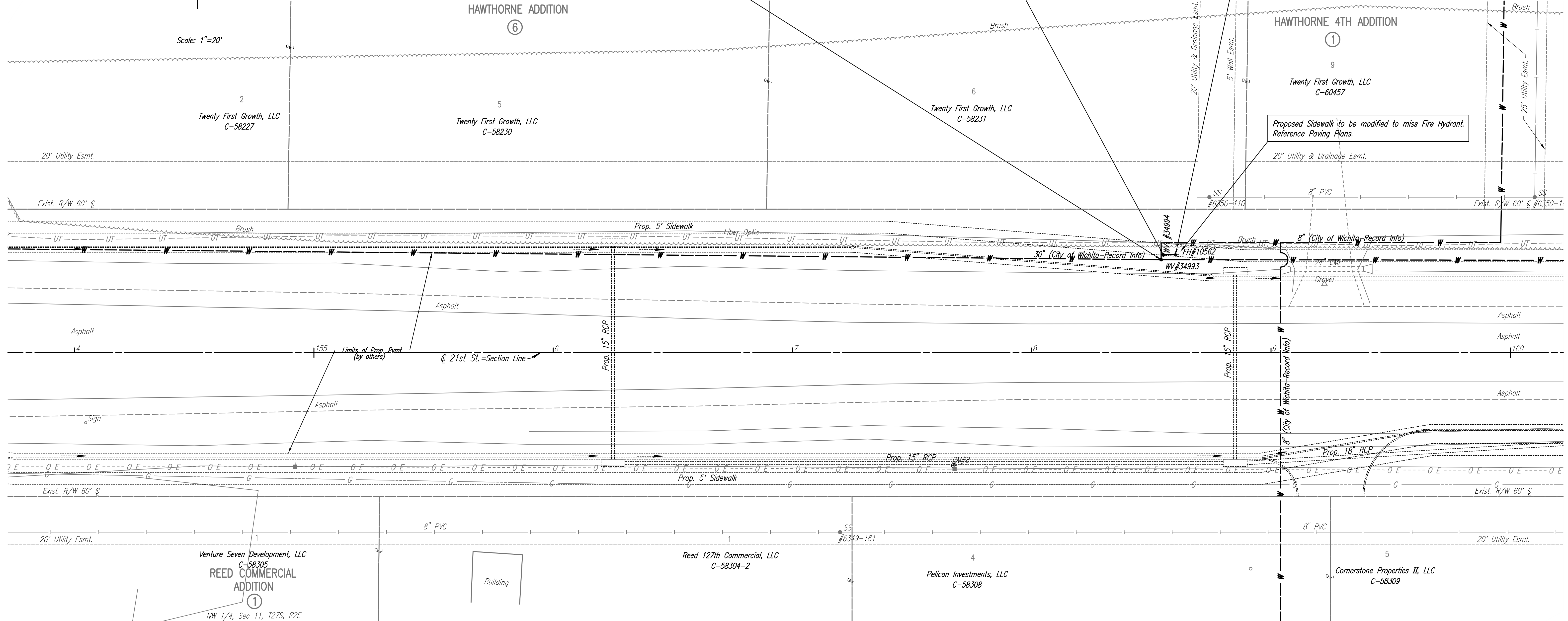
Venture Seven Development, LLC
C-58305
REED COMMERCIAL
ADDITION
①
NW 1/4, Sec 11, T27S, R2E

Reed 127th Commercial, LLC
C-58304-2

4
Pelican Investments, LLC
C-58308

5
Cornerstone Properties II, LLC
C-58309

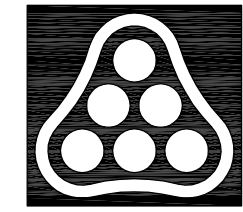
Proposed Sidewalk to be modified to miss Fire Hydrant.
Reference Paving Plans.



* EXISTING ELEVATION IS FROM
RECORD INFORMATION.
CONTRACTOR SHALL VERIFY ACTUAL
TOP OF VALVE BOX ELEVATION.

UTILITIES
Gas Kansas Gas Service
Power Westar Energy
San. Sewer Wichita Water Utilities
Telephone AT&T
Water Wichita Water Utilities

BM #8 RR spike in N. face Power Pole, 4th Pole E of
127th E on S Side 21st St. N.
47.21' Rt. Sta. 157+67.47 Elev. 1367.22



No.	Revision	By	Date
21ST STREET N. - FROM K-96 TO 159TH STREET E. WATERLINE ADJUSTMENTS STA. 154+00 TO STA. 160+00			
JAMES L. ARMOUR, P.E. - CITY ENGINEER CITY OF WICHITA PROJECT NO. 448-90380			
Professional Engineering Consultants, P.A. 303 S. TOPEKA • WICHITA, KANSAS 67202 316-262-2691 • FAX 316-262-3003			
Designed by	MDK	Job No.	35-01616-002
Drawn by		Date	JANUARY 2003
			Sht. B9 of 40