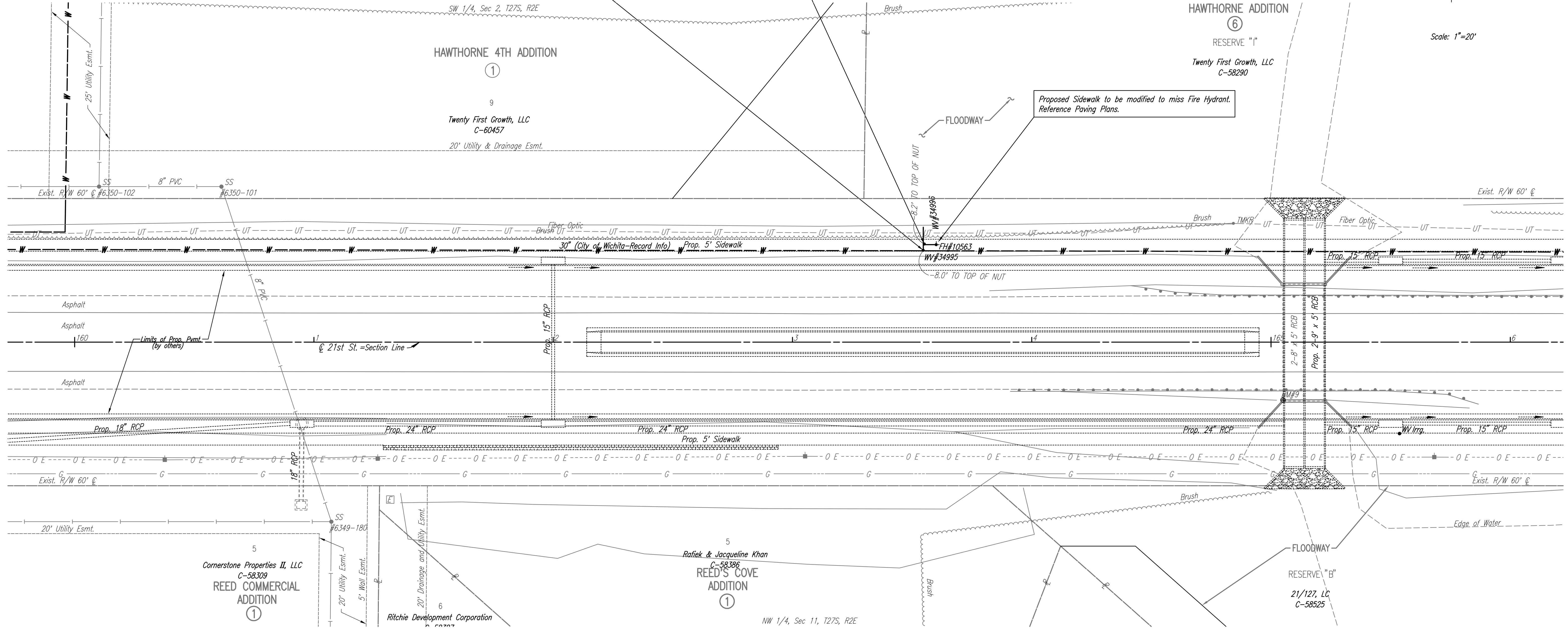




Scale: 1"=20'

N: 1,699,936.3548, E: 1,692,862.7681
@ 21st St. N., Sta. 163+55.00, 38' Lt.
Adjust Existing Water Valve (C.O.W. #34995)
Existing Top of Box Elev.= 1351.69
Proposed Top of Box Elev.= 1352.59
Total Adjustment = +0.90'
Provide Valve Stem Extension to within
5' of Proposed Top Elevation.

N: 1,699,938.9779, E: 1,692,863.1602
@ 21st St. N., Sta. 163+55.00, 41' Lt.
Adjust Existing Water Valve (C.O.W. #34996)
Existing Top of Box Elev.= 1351.75
Proposed Top of Box Elev.= 1352.64
Total Adjustment = +0.89'
Provide Valve Stem Extension to within
5' of Proposed Top Elevation.



HAWTHORNE ADDITION
⑥
RESERVE "I"
Twenty First Growth, LLC
C-58290

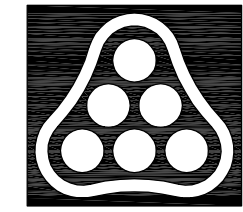
Cornerstone Properties II, LLC
C-58309
REED COMMERCIAL
ADDITION
①

Rafiek & Jacqueline Khan
C-58386
REED'S COVE
ADDITION
①

RESERVE "B"
21/127, LC
C-58525

- UTILITIES**
- Gas: Kansas Gas Service
 - San. Sewer: Wichita Water Utilities
 - Power: Westar Energy
 - Telephone: AT&T
 - Water: Wichita Water Utilities

BM #9 Chis. "a" W end S Headwall RCBC under 21st N
0.4 Mile E ± of 127th St. E.
24.18' Rt. Sta. 165+05.03 Elev. 1351.89



No.	Revision	By	Date
21ST STREET N. - FROM K-96 TO 159TH STREET E. WATERLINE ADJUSTMENTS			
STA. 160+00 TO STA. 166+00			
JAMES L. ARMOUR, P.E. - CITY ENGINEER CITY OF WICHITA PROJECT NO. 448-90380			
Professional Engineering Consultants, P.A. 303 S. TOPEKA • WICHITA, KANSAS 67202 316-262-2691 • FAX 316-262-3003			
Designed by	MDK	Job No.	35-01616-002
Drawn by		Date	JANUARY 2003
			Sht. B10 of 40