

Scale: 1"=20'



HAWTHORNE ADDITION  
 ⑥  
 RESERVE "I"  
 Twenty First Growth, LLC  
 C-58290

N: 1,699,940.3883, E: 1,693,235.5755  
 @ 21st St. N., Sta. 167+27.00, 33' Lt.  
 Adjust Existing Water Valve  
 Existing Top of Box Elev.= 1351.57 \*  
 Proposed Top of Box Elev.= 1351.34  
 Total Adjustment = -0.23'

N: 1,699,946.1669, E: 1,693,300.6458  
 @ 21st St. N., Sta. 167+93.00, 37' Lt.  
 Relocate Existing Air Release Assembly (C.O.W. #34997)  
 See detail, sheet no. B40

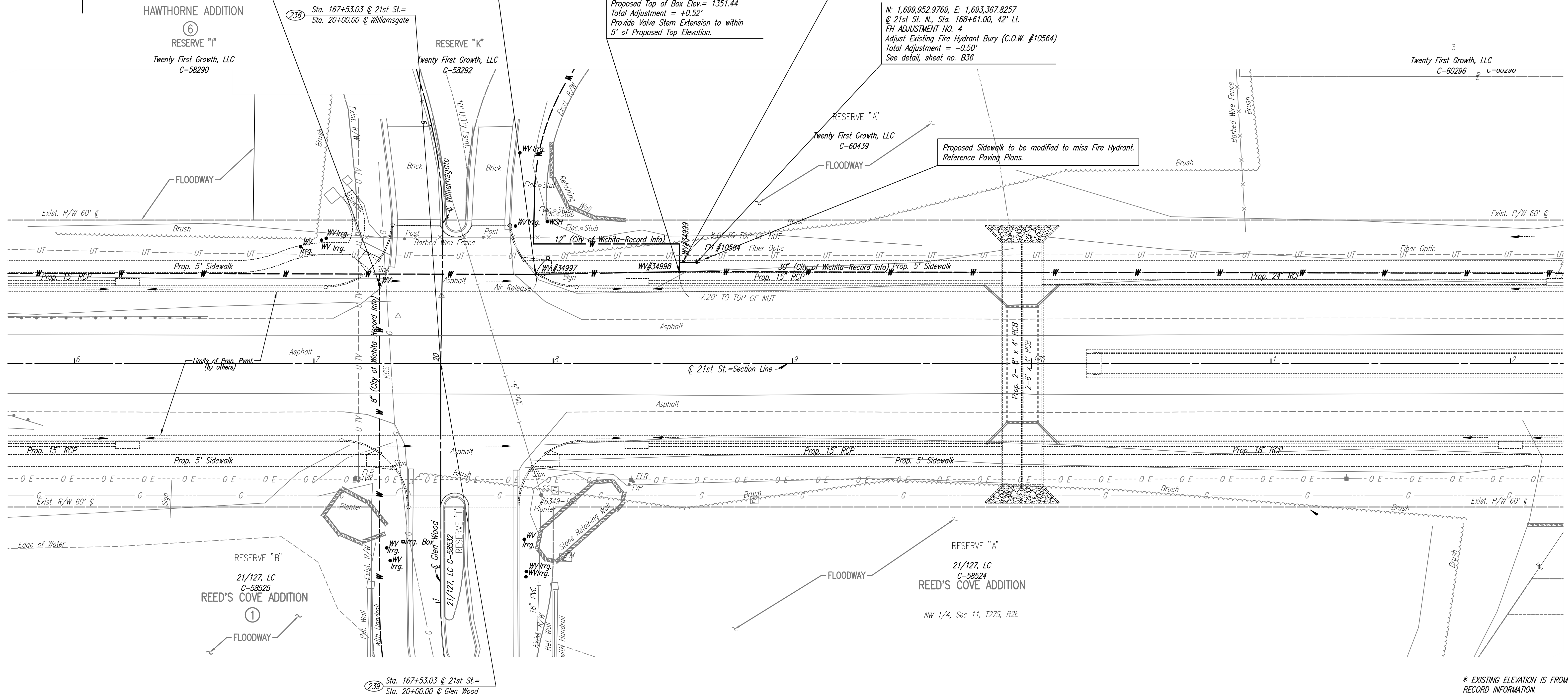
N: 1,699,948.7916, E: 1,693,360.6947  
 @ 21st St. N., Sta. 168+53.00, 38' Lt.  
 Adjust Existing Water Valve (C.O.W. #34998)  
 Existing Top of Box Elev.= 1350.92  
 Proposed Top of Box Elev.= 1351.44  
 Total Adjustment = +0.52'  
 Provide Valve Stem Extension to within  
 5' of Proposed Top Elevation.

N: 1,699,953.2008, E: 1,693,362.1990  
 @ 21st St. N., Sta. 168+55.00, 43' Lt.  
 Adjust Existing Water Valve (C.O.W. #34999)  
 Total Adjustment = +0.34'  
 See detail, sheet no. B36

N: 1,699,952.9769, E: 1,693,367.8257  
 @ 21st St. N., Sta. 168+61.00, 42' Lt.  
 FH ADJUSTMENT NO. 4  
 Adjust Existing Fire Hydrant Bury (C.O.W. #10564)  
 Total Adjustment = -0.50'  
 See detail, sheet no. B36

HAWTHORNE 3RD ADDITION  
 ①

Twenty First Growth, LLC  
 C-60296



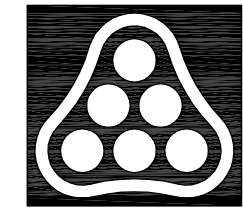
RESERVE "B"  
 21/127, LC  
 C-58525  
 REED'S COVE ADDITION  
 ①  
 FLOODWAY

RESERVE "A"  
 21/127, LC  
 C-58524  
 REED'S COVE ADDITION  
 NW 1/4, Sec 11, T27S, R2E

Sta. 167+53.03 @ 21st St.=  
 Sta. 20+00.00 @ Glen Wood

\* EXISTING ELEVATION IS FROM  
 RECORD INFORMATION.  
 CONTRACTOR SHALL VERIFY ACTUAL  
 TOP OF VALVE BOX ELEVATION.

- UTILITIES
- Cable TV Cox Communications
  - Gas Kansas Gas Service
  - Power Westar Energy
  - San. Sewer Wichita Water Utilities
  - Telephone AT&T
  - Water Wichita Water Utilities



No.	Revision	By	Date
21ST STREET N. - FROM K-96 TO 159TH STREET E. WATERLINE ADJUSTMENTS <b>STA. 166+00 TO STA. 172+00</b> JAMES L. ARMOUR, P.E. - CITY ENGINEER CITY OF WICHITA PROJECT NO. 448-90380 <b>Professional Engineering Consultants, P.A.</b> 303 S. TOPKA • WICHITA, KANSAS 67202 316-262-2691 • FAX 316-262-3003			
Designed by	MDK	Job No.	35-01616-002
Drawn by		Date	JANUARY 2003
			Sht. B11 of 40