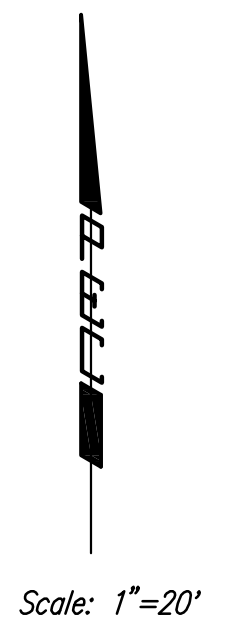


S 1/4 Cor., Sec. 2, T27S, R2E (207)
 1. Found 3/4" Iron Pipe with Moehring Cap Set over Exist. Cor.
 2. Chiseled "+" on Top of Concrete Post. 40.78' N
 3. 3 Nails in Fence Post. 53.04' NE

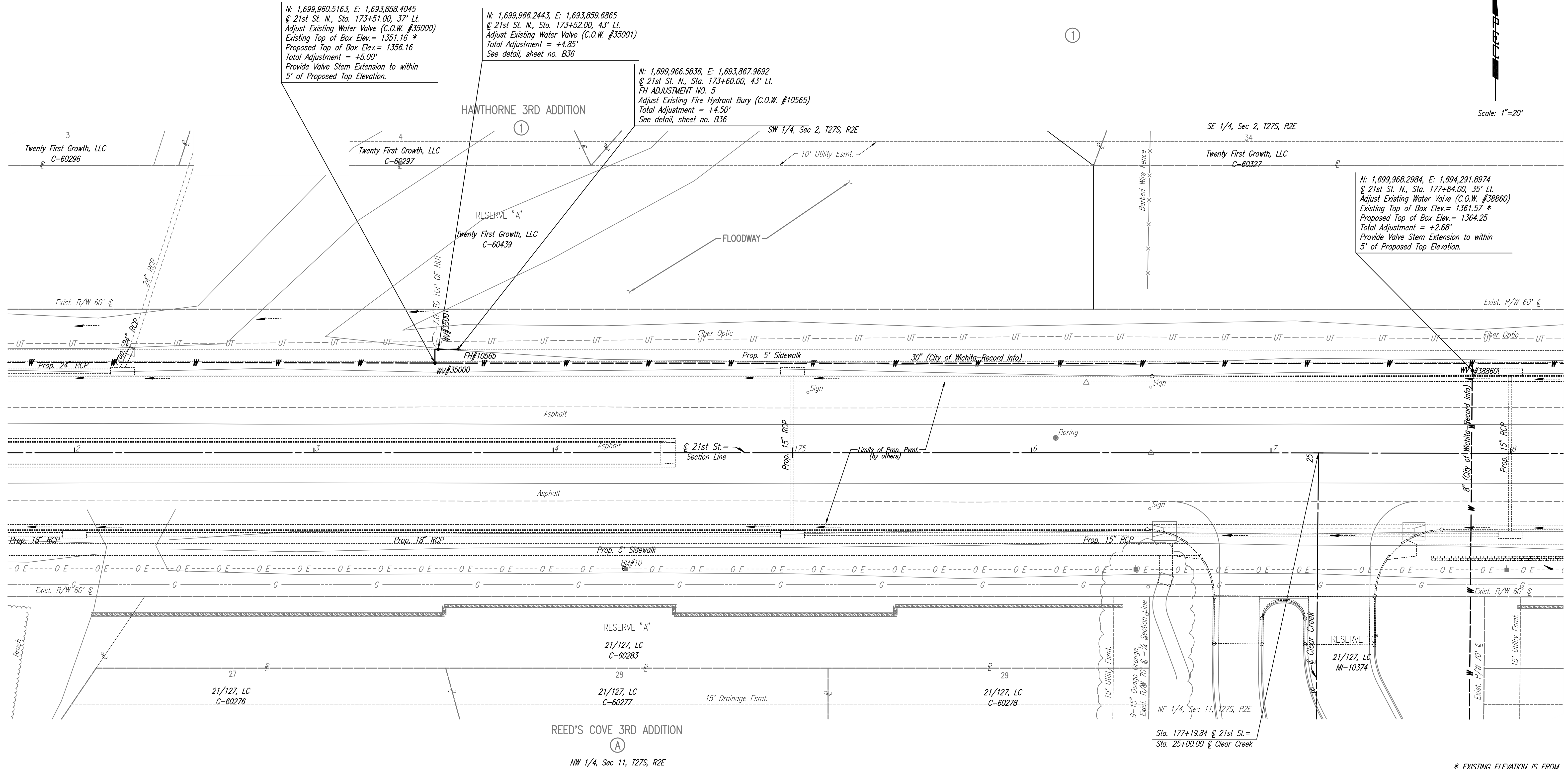


N: 1,699,960.5163, E: 1,693,858.4045
 @ 21st St. N., Sta. 173+51.00, 37' Lt.
 Adjust Existing Water Valve (C.O.W. #35000)
 Existing Top of Box Elev. = 1351.16 *
 Proposed Top of Box Elev. = 1356.16
 Total Adjustment = +5.00'
 Provide Valve Stem Extension to within
 5' of Proposed Top Elevation.

N: 1,699,966.2443, E: 1,693,859.6865
 @ 21st St. N., Sta. 173+52.00, 43' Lt.
 Adjust Existing Water Valve (C.O.W. #35001)
 Total Adjustment = +4.85'
 See detail, sheet no. B36

N: 1,699,966.5836, E: 1,693,867.9692
 @ 21st St. N., Sta. 173+60.00, 43' Lt.
 FH ADJUSTMENT NO. 5
 Adjust Existing Fire Hydrant Bury (C.O.W. #10565)
 Total Adjustment = +4.50'
 See detail, sheet no. B36

N: 1,699,968.2984, E: 1,694,291.8974
 @ 21st St. N., Sta. 177+84.00, 35' Lt.
 Adjust Existing Water Valve (C.O.W. #38860)
 Existing Top of Box Elev. = 1361.57 *
 Proposed Top of Box Elev. = 1364.25
 Total Adjustment = +2.68'
 Provide Valve Stem Extension to within
 5' of Proposed Top Elevation.

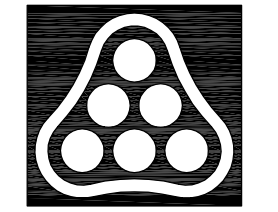


* EXISTING ELEVATION IS FROM
 RECORD INFORMATION.
 CONTRACTOR SHALL VERIFY ACTUAL
 TOP OF VALVE BOX ELEVATION.

REED'S COVE 3RD ADDITION
 (A)
 NW 1/4, Sec 11, T27S, R2E

BM #10 RR spike in N. face Power Pole, S side 21st
 St. N. 1st Pole W of S 1/4 Cor. Sec. 2-T27S-R2E.
 48.33' Rt. Sta. 174+29.72 Elev. 1357.29

UTILITIES
 Gas Kansas Gas Service
 Power Westar Energy
 Telephone AT&T
 Water Wichita Water Utilities



No.	Revision	By	Date
21ST STREET N. - FROM K-96 TO 159TH STREET E. WATERLINE ADJUSTMENTS STA. 172+00 TO STA. 178+00 JAMES L. ARMOUR, P.E. - CITY ENGINEER CITY OF WICHITA PROJECT NO. 448-90380 Professional Engineering Consultants, P.A. 303 S. TOPKA • WICHITA, KANSAS 67202 316-262-2691 • FAX 316-262-3003			
Designed by	MDK	Job No.	35-01616-002
Drawn by		Date	JANUARY 2003