

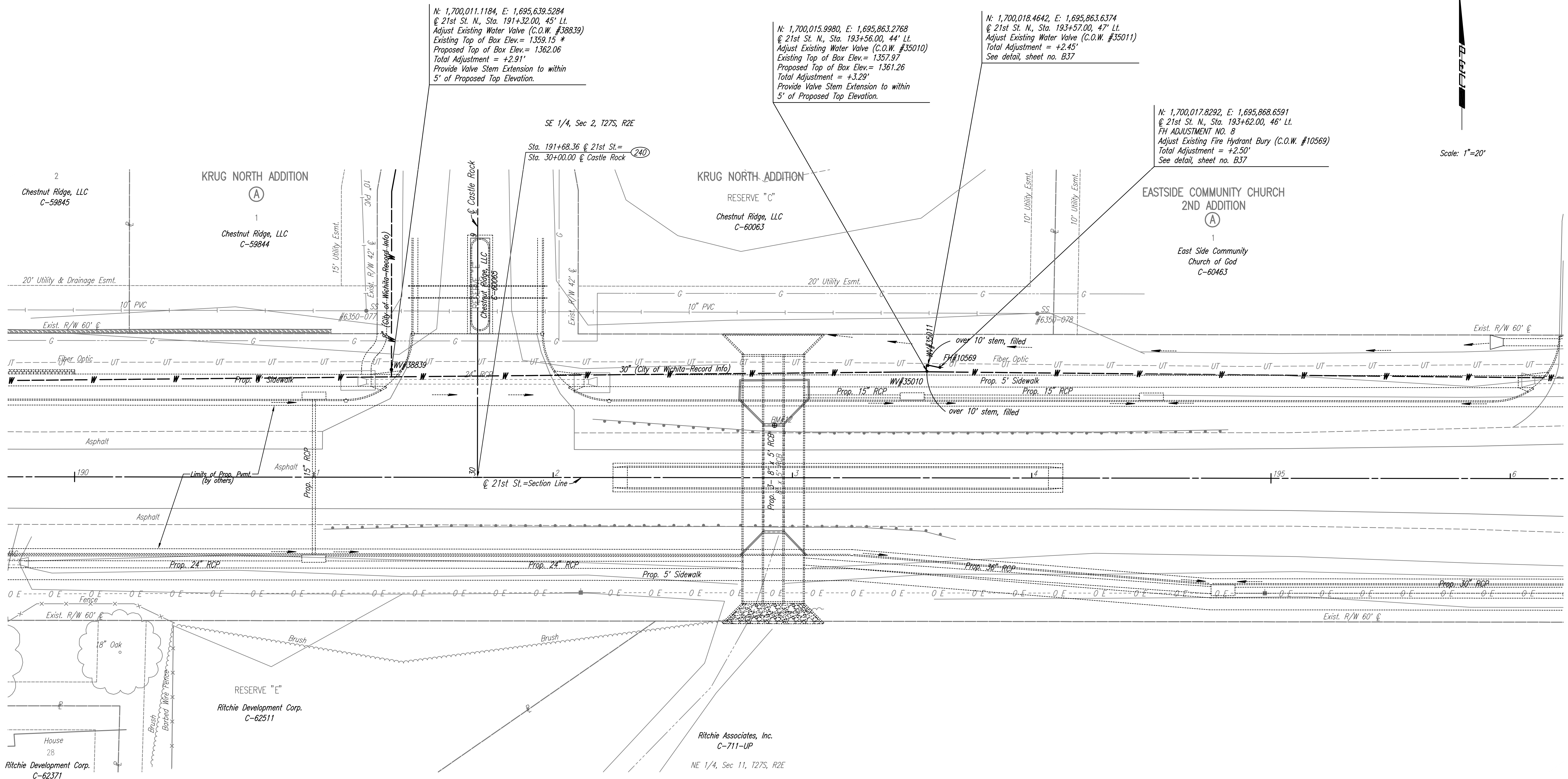
Scale: 1"=20'

N: 1,700,011.1184, E: 1,695,639.5284  
@ 21st St. N., Sta. 191+32.00, 45' Lt.  
Adjust Existing Water Valve (C.O.W. #38839)  
Existing Top of Box Elev.= 1359.15 \*  
Proposed Top of Box Elev.= 1362.06  
Total Adjustment = +2.91'  
Provide Valve Stem Extension to within  
5' of Proposed Top Elevation.

N: 1,700,015.9980, E: 1,695,863.2768  
@ 21st St. N., Sta. 193+56.00, 44' Lt.  
Adjust Existing Water Valve (C.O.W. #35010)  
Existing Top of Box Elev.= 1357.97  
Proposed Top of Box Elev.= 1361.26  
Total Adjustment = +3.29'  
Provide Valve Stem Extension to within  
5' of Proposed Top Elevation.

N: 1,700,018.4642, E: 1,695,863.6374  
@ 21st St. N., Sta. 193+57.00, 47' Lt.  
Adjust Existing Water Valve (C.O.W. #35011)  
Total Adjustment = +2.45'  
See detail, sheet no. B37

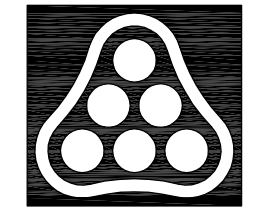
N: 1,700,017.8292, E: 1,695,868.6591  
@ 21st St. N., Sta. 193+62.00, 46' Lt.  
FH ADJUSTMENT NO. 8  
Adjust Existing Fire Hydrant Bury (C.O.W. #10569)  
Total Adjustment = +2.50'  
See detail, sheet no. B37



\* EXISTING ELEVATION IS FROM  
RECORD INFORMATION.  
CONTRACTOR SHALL VERIFY ACTUAL  
TOP OF VALVE BOX ELEVATION.

- UTILITIES**
- Gas: Kansas Gas Service
  - Power: Westar Energy
  - San. Sewer: Wichita Water Utilities
  - Telephone: AT&T
  - Water: Wichita Water Utilities

BM #12 Chis. "a" Center N. headwall RCBC under 21st  
St. N., W of 143rd E.  
21.94' Lt. Sta. 192+92.51 Elev. 1360.68



No.	Revision	By	Date
21ST STREET N. - FROM K-96 TO 159TH STREET E. WATERLINE ADJUSTMENTS <b>STA. 190+00 TO STA. 196+00</b> JAMES L. ARMOUR, P.E. - CITY ENGINEER CITY OF WICHITA PROJECT NO. 448-90380 <b>Professional Engineering Consultants, P.A.</b> 303 S. TOPEKA • WICHITA, KANSAS 67202 316-262-2691 • FAX 316-262-3003			
Designed by	MDK	Job No.	35-01616-002
Drawn by		Date	JANUARY 2003
			Sht. B15 of 40

Saved 08-14-2008 9:25:02 AM by RW  
Q:\2007\01616\002\bar190