

Scale: 1"=20'

N: 1,700,037.5194, E: 1,696,281.1164  
 @ 21st St. N., Sta. 197+74.00, 56' Lt.  
 Adjust Existing Water Valve  
 Existing Top of Box Elev.=1362.73 \*  
 Proposed Top of Box Elev.= 1361.57  
 Total Adjustment = -1.16'

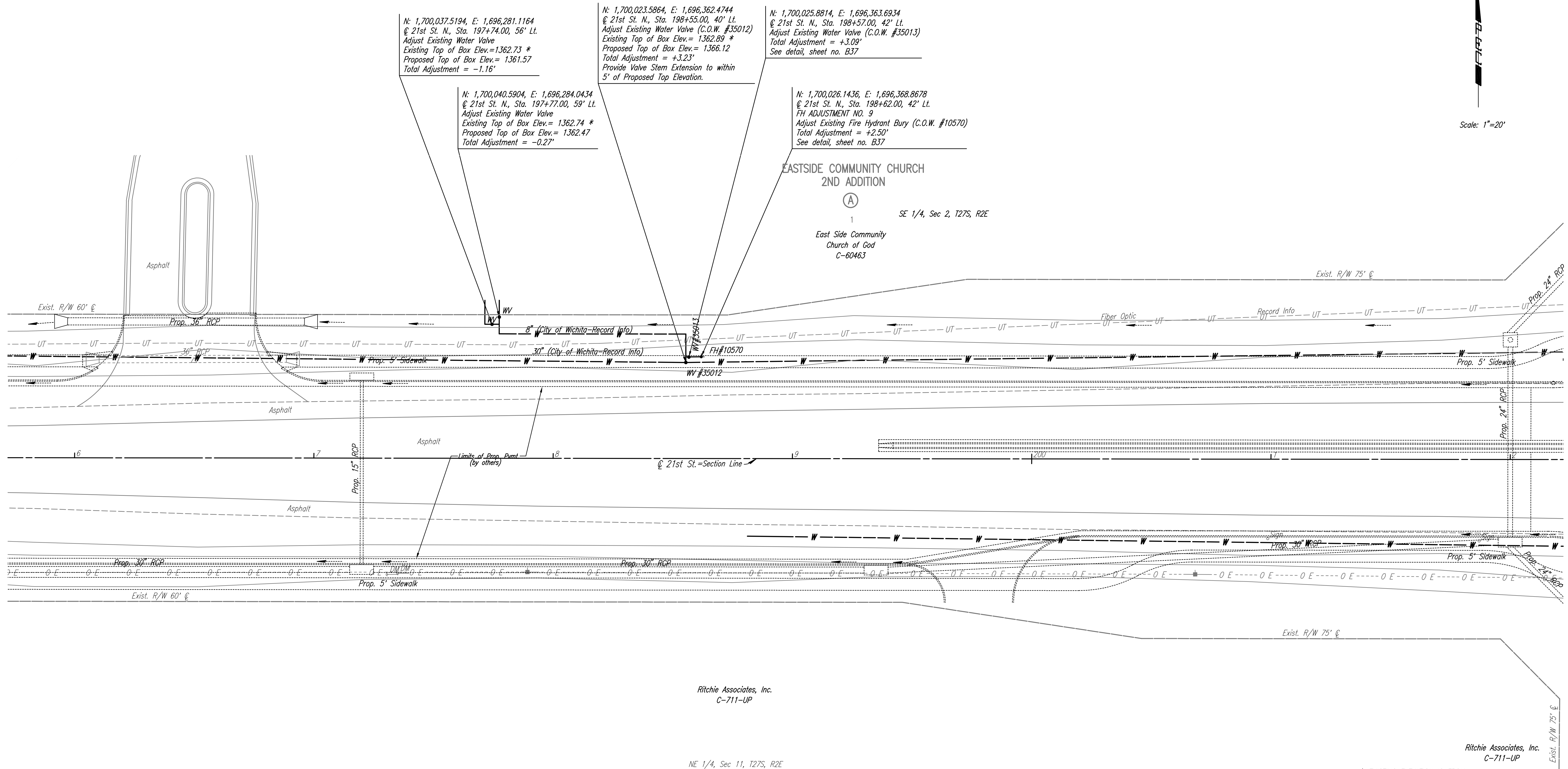
N: 1,700,040.5904, E: 1,696,284.0434  
 @ 21st St. N., Sta. 197+77.00, 59' Lt.  
 Adjust Existing Water Valve  
 Existing Top of Box Elev.= 1362.74 \*  
 Proposed Top of Box Elev.= 1362.47  
 Total Adjustment = -0.27'

N: 1,700,023.5864, E: 1,696,362.4744  
 @ 21st St. N., Sta. 198+55.00, 40' Lt.  
 Adjust Existing Water Valve (C.O.W. #35012)  
 Existing Top of Box Elev.= 1362.89 \*  
 Proposed Top of Box Elev.= 1366.12  
 Total Adjustment = +3.23'  
 Provide Valve Stem Extension to within  
 5' of Proposed Top Elevation.

N: 1,700,025.8814, E: 1,696,363.6934  
 @ 21st St. N., Sta. 198+57.00, 42' Lt.  
 Adjust Existing Water Valve (C.O.W. #35013)  
 Total Adjustment = +3.09'  
 See detail, sheet no. B37

N: 1,700,026.1436, E: 1,696,368.8678  
 @ 21st St. N., Sta. 198+62.00, 42' Lt.  
 FH ADJUSTMENT NO. 9  
 Adjust Existing Fire Hydrant Bury (C.O.W. #10570)  
 Total Adjustment = +2.50'  
 See detail, sheet no. B37

EASTSIDE COMMUNITY CHURCH  
 2ND ADDITION  
 (A)  
 1  
 SE 1/4, Sec 2, T27S, R2E  
 East Side Community  
 Church of God  
 C-60463



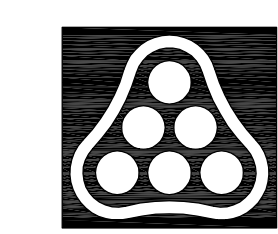
Ritchie Associates, Inc.  
 C-711-UP

NE 1/4, Sec 11, T27S, R2E

Ritchie Associates, Inc.  
 C-711-UP

\* EXISTING ELEVATION IS FROM  
 RECORD INFORMATION.  
 CONTRACTOR SHALL VERIFY ACTUAL  
 TOP OF VALVE BOX ELEVATION.

UTILITIES  
 Power Weststar Energy  
 Telephone AT&T  
 Water Wichita Water Utilities



| No.   | Revision | By      | Date           |
|---|----------|---------|----------------|
| 21ST STREET N. - FROM K-96 TO 159TH STREET E.<br>WATERLINE ADJUSTMENTS  |          |         |                |
| STA. 196+00 TO STA. 202+00  |          |         |                |
| JAMES L. ARMOUR, P.E. - CITY ENGINEER<br>CITY OF WICHITA PROJECT NO. 448-90380  |          |         |                |
| <b>Professional Engineering Consultants, P.A.</b><br>303 S. TOPEKA • WICHITA, KANSAS 67202<br>316-262-2691 • FAX 316-262-3003 |          |         |                |
| Designed by   | MDK      | Job No. | 35-01616-002   |
| Drawn by  |          | Date    | JANUARY 2003   |
|   |          |         | Sht. B16 of 40 |

Saved 08-14-2008 9:23:30 AM by RW  
 G:\2007\01616\002\ber196