

N: 1,700,037.8084, E: 1,696,745.5324
 @ 21st St. N., Sta. 202+39.00, 45' Lt.
 Adjust Existing Water Valve (C.O.W. #35014)
 Existing Top of Box Elev. = 1369.66 *
 Proposed Top of Box Elev. = 1372.39
 Total Adjustment = +2.73'
 Provide Valve Stem Extension to within
 5' of Proposed Top Elevation.

N: 1,700,038.0674, E: 1,696,752.5724
 @ 21st St. N., Sta. 202+46.00, 45' Lt.
 Adjust Existing Water Valve (C.O.W. #35015)
 Existing Top of Box Elev. = 1369.59 *
 Proposed Top of Box Elev. = 1372.18
 Total Adjustment = +2.59'
 Provide Valve Stem Extension to within
 5' of Proposed Top Elevation.

N: 1,700,040.0654, E: 1,696,747.4214
 @ 21st St. N., Sta. 202+41.00, 47' Lt.
 Adjust Existing Water Valve (C.O.W. #35016)
 Existing Top of Box Elev. = 1369.46 *
 Proposed Top of Box Elev. = 1372.44
 Total Adjustment = +2.98'
 Provide Valve Stem Extension to within
 5' of Proposed Top Elevation.

N: 1,700,029.3171, E: 1,696,747.5624
 @ 21st St. N., Sta. 202+40.00, 37' Lt.
 Adjust Existing Water Valve (C.O.W. #35017)
 Existing Top of Box Elev. = 1370.70
 Proposed Top of Box Elev. = 1371.78
 Total Adjustment = +1.08'
 Provide Valve Stem Extension to within
 5' of Proposed Top Elevation.

N: 1,700,044.7032, E: 1,696,869.3983
 @ 21st St. N., Sta. 203+62.30, 49.6' Lt.
 FH RELOCATE NO. 13
 See detail, sheet no. B40

N: 1,700,040.5484, E: 1,696,869.5674
 @ 21st St. N., Sta. 203+62.00, 45' Lt.
 Adjust Existing Water Valve (C.O.W. #35018)
 Total Adjustment = +0.14'
 See detail, sheet no. B40.

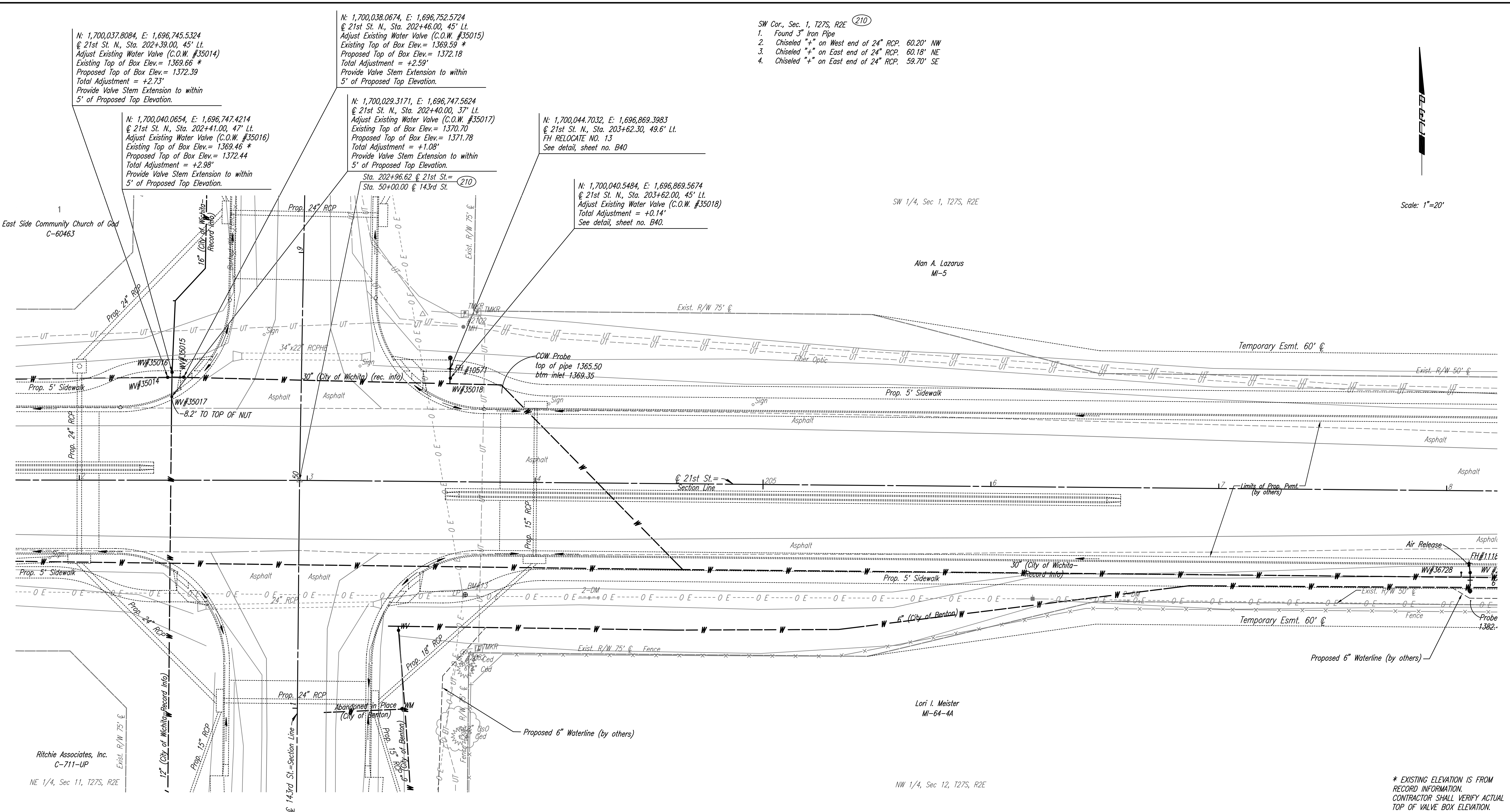
- SW Cor., Sec. 1, T27S, R2E (210)
1. Found 3" Iron Pipe
 2. Chiseled "+" on West end of 24" RCP. 60.20' NW
 3. Chiseled "+" on East end of 24" RCP. 60.18' NE
 4. Chiseled "+" on East end of 24" RCP. 59.70' SE

Scale: 1"=20'

East Side Community Church of God
 C-60463

Alan A. Lazarus
 MI-5

SW 1/4, Sec 1, T27S, R2E



Ritchie Associates, Inc.
 C-711-UP

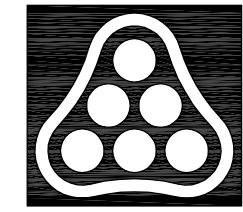
Lori I. Meister
 MI-64-4A

NW 1/4, Sec 12, T27S, R2E

* EXISTING ELEVATION IS FROM
 RECORD INFORMATION.
 CONTRACTOR SHALL VERIFY ACTUAL
 TOP OF VALVE BOX ELEVATION.

BM #13 RR spike in N. face Power Pole, SE cor. 21st
 St. N & 143rd St. E.
 59.54' Rt. Sta. 203+69.75 Elevation: 1374.64

- UTILITIES
- Power Westar Energy
 - Telephone AT&T
 - Water Wichita Water Utilities
 - Water City of Benton



No.	Revision	By	Date
21ST STREET N. - FROM K-96 TO 159TH STREET E. WATERLINE ADJUSTMENTS STA. 202+00 TO STA. 208+00 JAMES L. ARMOUR, P.E. - CITY ENGINEER CITY OF WICHITA PROJECT NO. 448-90380 Professional Engineering Consultants, P.A. 303 S. TOPEKA • WICHITA, KANSAS 67202 316-262-2691 • FAX 316-262-3003			
Designed by	MDK	Job No.	35-01616-002
Drawn by		Date	JANUARY 2003
			Sht. B17 of 40