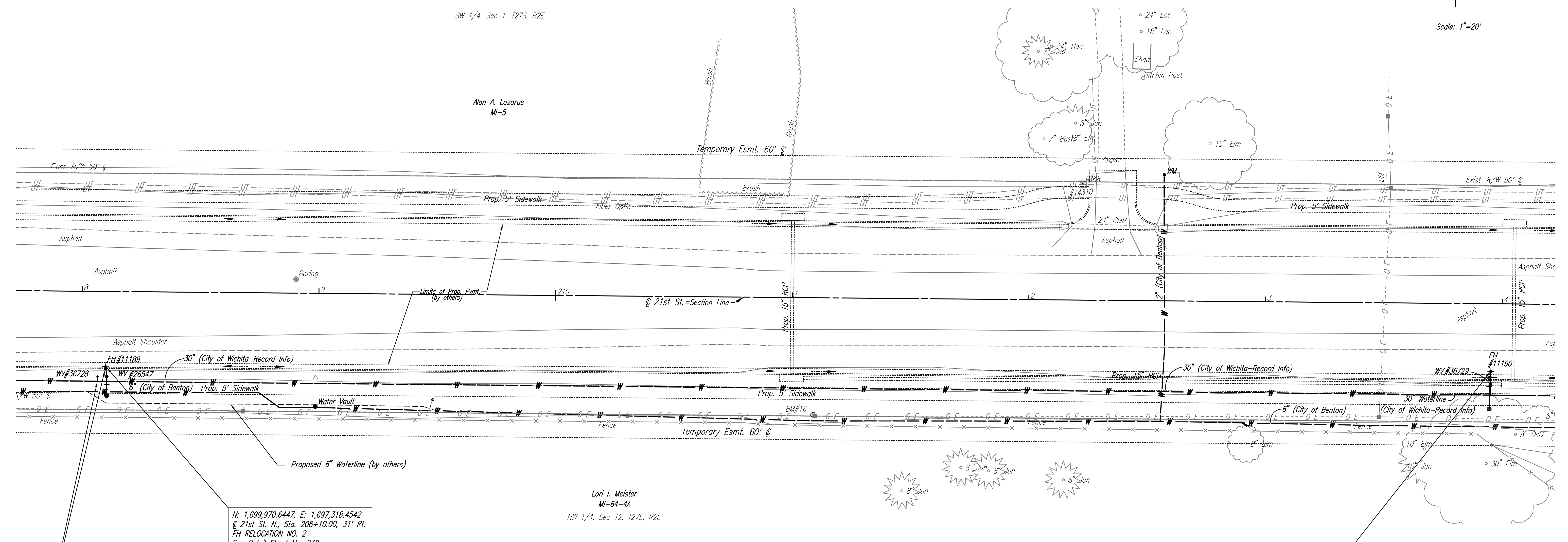


Scale: 1"=20'

SW 1/4, Sec 1, T27S, R2E

Alan A. Lazarus
MI-5

Lori I. Meister
MI-64-4A
NW 1/4, Sec 12, T27S, R2E



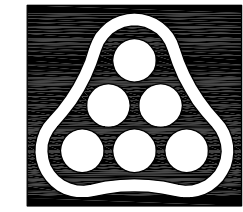
N: 1,699,970.6447, E: 1,697,318.4542
@ 21st St. N., Sta. 208+10.00, 31' Rt.
FH RELOCATION NO. 2
See Detail Sheet No. B38

N: 1,699,983.4036, E: 1,697,903.6517
@ 21st St. N., Sta. 213+95.42, 29' Rt.
FH RELOCATION NO. 3
See Detail Sheet No. B38

N: 1,699,969.6456, E: 1,697,318.4565
@ 21st St. N., Sta. 208+10.09, 32' Rt.
Relocate Existing Air Release Valve (C.O.W. #36728)
See detail, sheet no. B40

BM #16 RR spike in N. face Power Pole, S side. 21st St. N., 4th Pole E of 143rd E. 49.52' Rt. Sta. 211+09.18 Elev. 1377.80

- UTILITIES
- Power Westar Energy
 - Telephone AT&T
 - Water Wichita Water Utilities
 - Water City of Benton



No.	Revision	By	Date
21ST STREET N. - FROM K-96 TO 159TH STREET E. WATERLINE ADJUSTMENTS STA. 208+00 TO STA. 214+00 JAMES L. ARMOUR, P.E. - CITY ENGINEER CITY OF WICHITA PROJECT NO. 448-90380 Professional Engineering Consultants, P.A. 303 S. TOPEKA • WICHITA, KANSAS 67202 316-262-2691 • FAX 316-262-3003			
Designed by	MDK	Job No.	35-01616-002
Drawn by		Date	JANUARY 2003
			Sht. B18 of 40

Saved 08-14-2008 8:45:02 AM by CSL
 C:\2007\01616\002\bar208