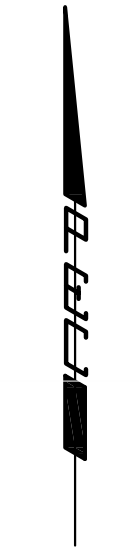


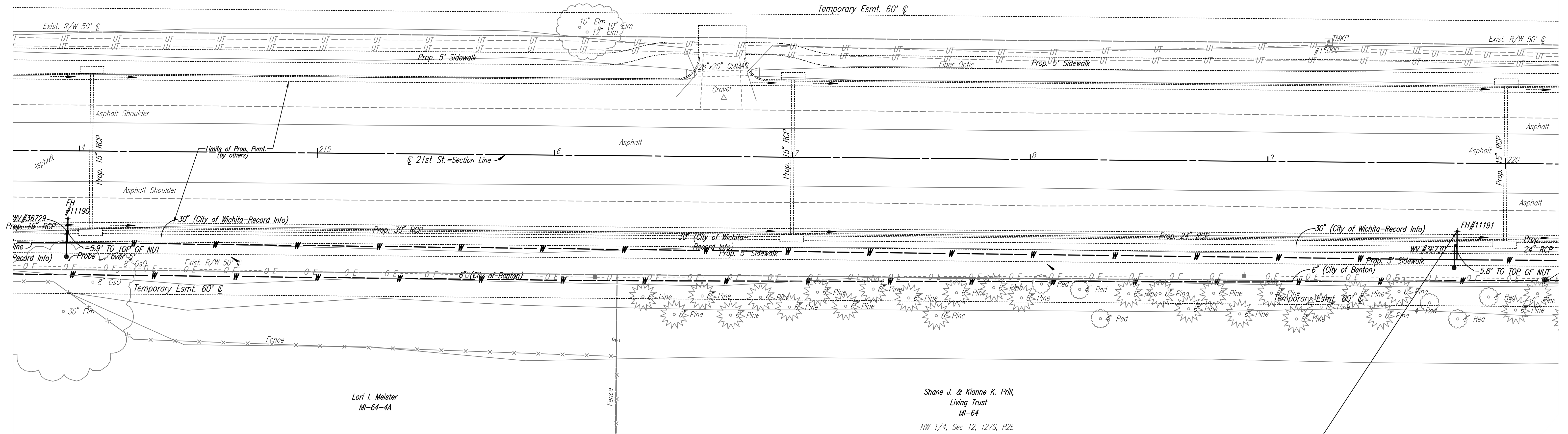
SW 1/4, Sec 1, T27S, R2E



Scale: 1"=20'

Alan A. Lazarus
MI-5

Temporary Esmt. 60' C



Shane J. & Kianne K. Prill,
Living Trust
MI-64
NW 1/4, Sec 12, T27S, R2E

Lori I. Meister
MI-64-4A

UTILITIES

Power	Westar Energy
Telephone	AT&T
Water	Wichita Water Utilities
Water	City of Benton

N: 1,699,992.8870, E: 1,698,488.0454
 @ 21st St. N., Sta. 219+79.89, 28.6' Rt.
 FH RELOCATION NO. 4
 See Detail Sheet No. B39

No.	Revision	By	Date
21ST STREET N. - FROM K-96 TO 159TH STREET E. WATERLINE ADJUSTMENTS STA. 214+00 TO STA. 220+00 JAMES L. ARMOUR, P.E. - CITY ENGINEER CITY OF WICHITA PROJECT NO. 448-90380 Professional Engineering Consultants, P.A. 303 S. TOPEKA • WICHITA, KANSAS 67202 316-262-2691 • FAX 316-262-3003			
Designed by	MDK	Job No.	35-01616-002
Drawn by		Date	JANUARY 2003
			Sht. B19 of 40

